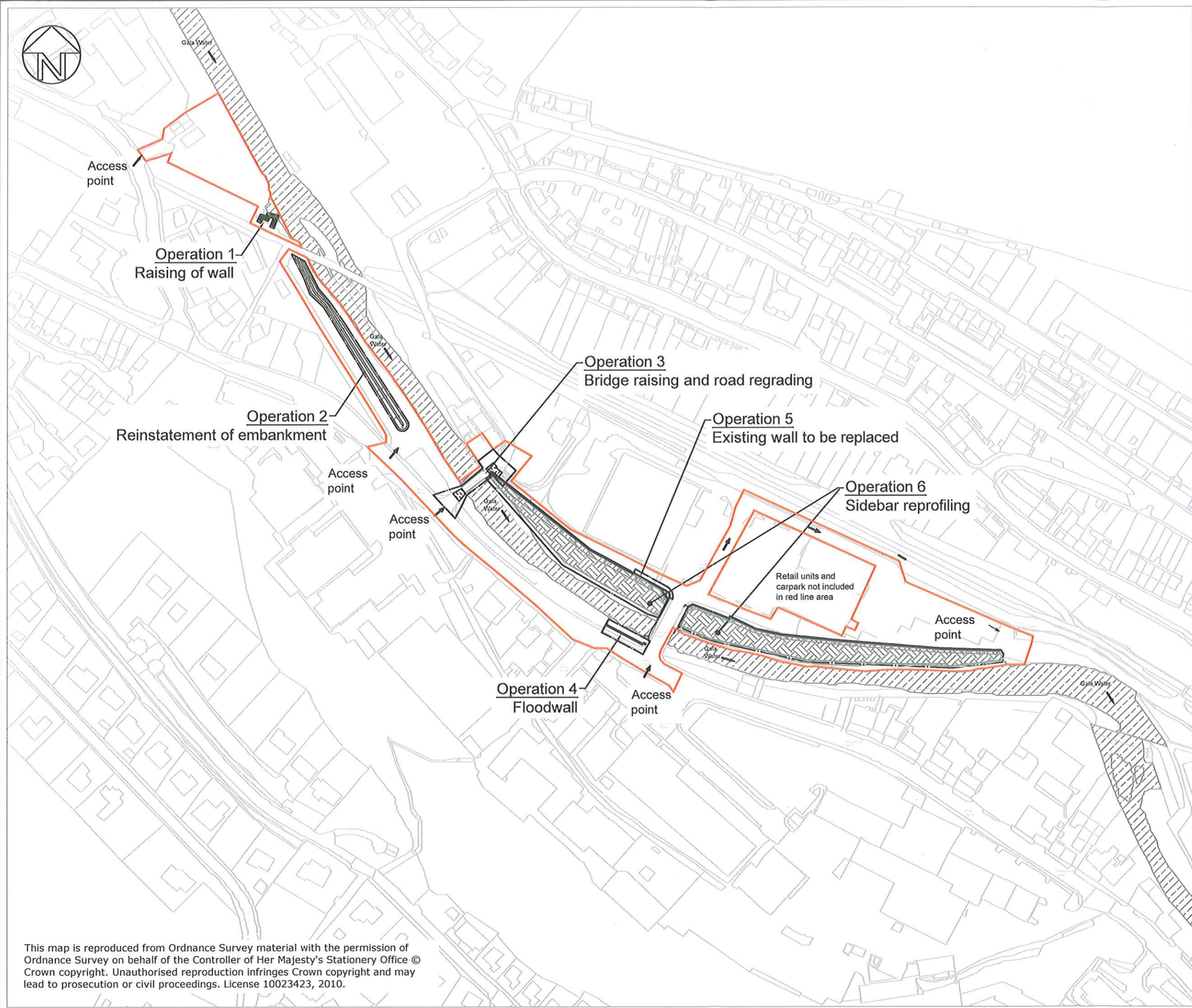




- General Notes**
- All dimensions shown are in millimetres unless otherwise stated and levels in metres to Ordnance Datum.
  - Do not scale from this drawing. All dimensions must be checked/verified on site - if in doubt ask.
  - Drawing to be read in conjunction with drawings :-  
 2009s0390-FPO-000 - Location Plan  
 2009s0521-FPO-101 - Operation 1 Raising of Existing Floodwall  
 2009s0521-FPO-102 - Operation 2 Reinstatement of Flood Embankment  
 2009s0521-FPO-103 - Operation 3 Bridge Raising and Road Regrading  
 2009s0521-FPO-104 - Operation 4 & 5 Floodwall Construction  
 2009s0521-FPO-105 - Operation 6 Sidebar Reprofilling  
 2009s0521-FPO-106 - Operation 6 Sidebar Reprofilling Continued

- Legend**
- Proposed Structures
  - Limits of Land Affected by Operations
  - Limits of Lateral Deviation
  - Limits of Vertical Deviation
  - Normal Extent of Gala Water
  - Area to be lowered to increase conveyance
  - Proposed access points
  - Existing Ground Level
  - 200 Year + Climate Change Water Level
  - 75 Year Water Level
  - Surveyed Water Level



This is the plan marked 2009s0521-FPO-100 referred to in the Galashiels (Plumtree & Wilderhaugh and Netherdale) Flood Prevention Scheme 2010 made by the Scottish Borders Council.

Deputy Director, Environmental Quality Division, Scottish Government at Edinburgh	Seal	Head of Legal and Democratic Services
Date: 22-3-11		Date: 18/10/2010
Signature: <i>[Signature]</i>		Signature: <i>[Signature]</i>

Rev	Modifications	Date	Drawn	Designed	Checked	Approved

**JBA consulting**  
 Port Newark  
 1 Longragg Road  
 South Queensferry  
 Edinburgh  
 EH6 6TD  
 United Kingdom  
 www.jbaconsulting.co.uk  
 t +44 (0)131 3192540  
 f +44 (0)131 3192544  
 e info@jbaconsulting.co.uk

Other offices at: Skipton, Alton, Newcastle upon Tyne, Tackleton, Warrington, Northampton, Doncaster, Warrington, Salford, Haverhill Heath

for  
**Scottish Borders COUNCIL**  
 Galashiels Flood Prevention Scheme  
 Plumtree & Wilderhaugh  
 Masterplan

This document is the property of Jeremy Benn Associates Ltd. It shall not be reproduced in whole or in part, nor disclosed to a third party, without the permission of Jeremy Benn Associates Ltd.

Scale: 1:2500 @ A3	Drawn: K. Morris 13/10/10
	Designed: M. O'Neill 13/10/10
	Checked: D. Bassett 13/10/10
	Approved: D. Bassett 13/10/10
Digital File Name: 2009s0521-FPO-100-Masterplan.dwg	
Drawing Number: 2009s0521-FPO-100	Rev: Sheet No: Status: FPO

This map is reproduced from Ordnance Survey material with the permission of Ordnance Survey on behalf of the Controller of Her Majesty's Stationery Office © Crown copyright. Unauthorised reproduction infringes Crown copyright and may lead to prosecution or civil proceedings. License 10023423, 2010.