

Scottish Borders Wind Energy Consultancy

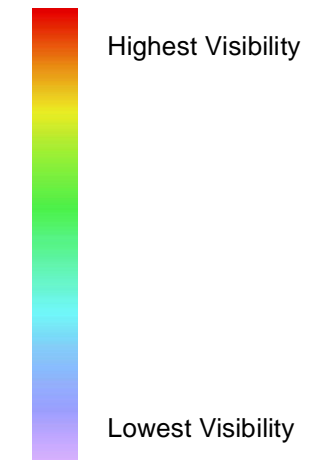
July 2013

7920_GIS_118

Legend

- SBC Local Authority Boundary
- Local Authority Boundary 15km Buffer
- Other Local Authority Boundaries
- Landscape Character Areas

ZTV:



Code	Landscape Character Types
1	Dissected Plateau Moorland
2	Plateau Grassland
3	Plateau Outliers
4	Southern Uplands with Scattered Forest
5	Southern Uplands Forest Covered
6	Cheviot Uplands
7	Cheviot Foothills
8	Rolling Farmland
9	Platform Farmland
10	Grassland with Rock Outcrops
11	Grassland with Hills
12	Undulating Grassland
13	Poor Rough Grassland
14	Upland Moorland
15	Lowland with Drumlins
16	Rolling Lowland Margin
17	Lowland Margin Platform
18	Lowland Margin with Hills
19	Coastal Farmland
20	Coastal Pasture
21	Coastal Moorland
22	Upland Valley with Pastoral Floor
23	Pastoral Upland Valley
24	Upland Valley with Farmland
25	Upland Valley with Woodland
26	Pastoral Upland Fringe Valley
27	Upland Fringe Valley with Settlements
28	Wooded Upland Fringe Valley
29	Lowland Valley with Farmland
30	Coastal Valley
LOCH	Inland Loch
LOCH_ISLD	Loch Island





Figure 4.4c

Visibility from Transport Routes
(50m high object)

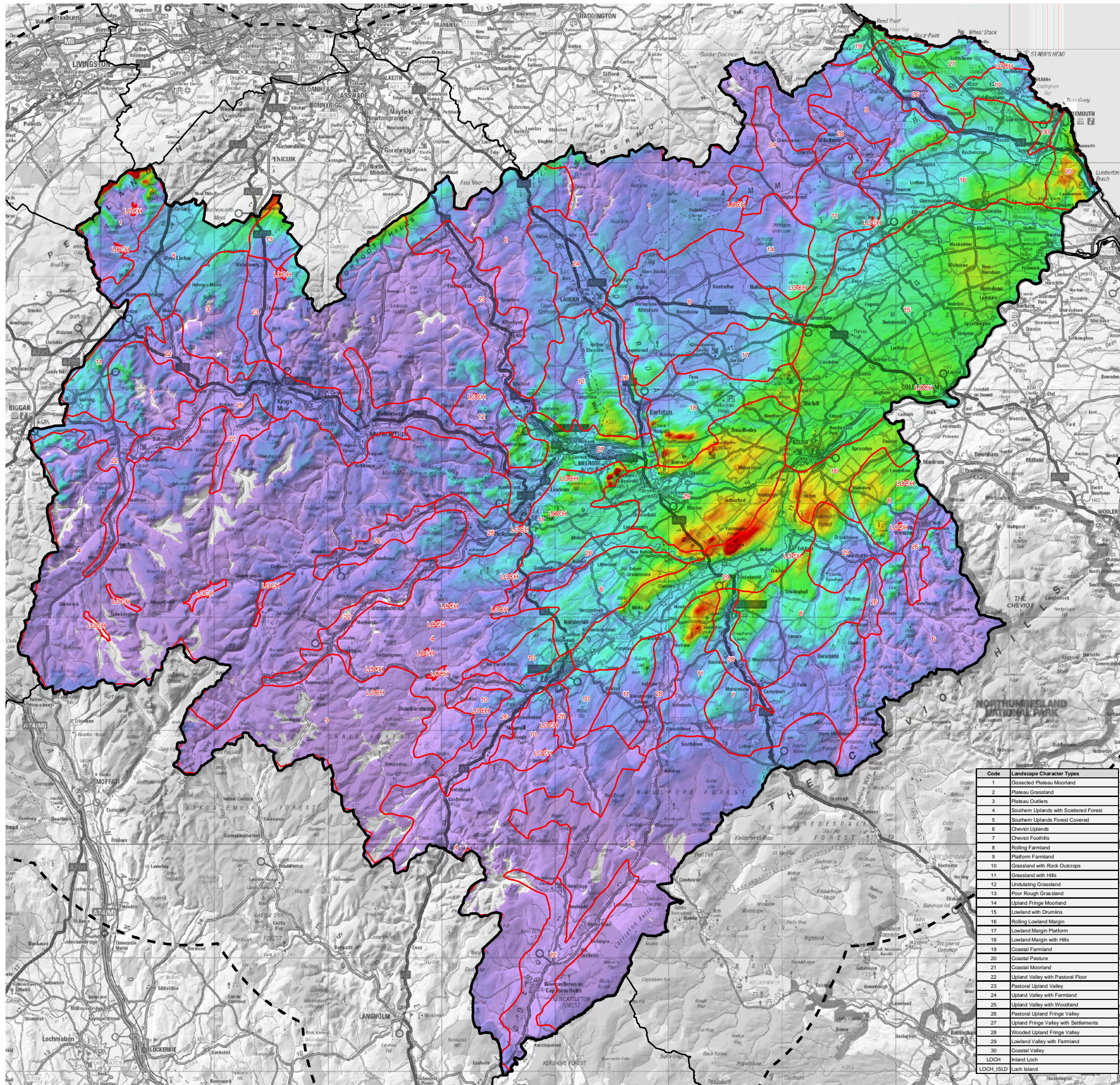
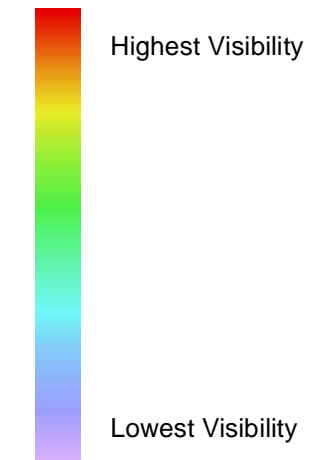


This map is reproduced from Ordnance Survey material with the permission of Ordnance Survey on behalf of the Controller of Her Majesty's Stationary Office © Crown Copyright 2013. Unauthorised reproduction infringes Crown copyright and may lead to prosecution or civil proceedings. 100017966

Legend

-  SBC Local Authority Boundary
-  Local Authority Boundary 15km Buffer
-  Other Local Authority Boundaries
-  Landscape Character Areas

ZTV:



Code	Landscape Character Types
1	Dissected Plateau Moorland
2	Plateau Grassland
3	Plateau Outliers
4	Southern Uplands with Scattered Forest
5	Southern Uplands Forest Covered
6	Cheviot Uplands
7	Cheviot Foothills
8	Rolling Farmland
9	Platform Farmland
10	Grassland with Rock Outcrops
11	Grassland with Hills
12	Undulating Grassland
13	Poor Rough Grassland
14	Upland Fringe Moorland
15	Lowland with Drumlins
16	Rolling Lowland Margin
17	Lowland Margin Platform
18	Lowland Margin with Hills
19	Coastal Farmland
20	Coastal Pasture
21	Coastal Moorland
22	Upland Valley with Pastoral Floor
23	Pastoral Upland Valley
24	Upland Valley with Farmland
25	Upland Valley with Woodland
26	Pastoral Upland Fringe Valley
27	Upland Fringe Valley with Settlements
28	Wooded Upland Fringe Valley
29	Lowland Valley with Farmland
30	Coastal Valley
LOCH	Inland Loch
LOCH_ISLD	Loch Island

Figure 4.4d

Visibility from Transport Routes
(100m high object)







This map is reproduced from Ordnance Survey material with the permission of Ordnance Survey on behalf of the Controller of Her Majesty's Stationary Office © Crown Copyright 2013. Unauthorised reproduction infringes Crown copyright and may lead to prosecution or civil proceedings. 100017966

Scottish Borders Wind Energy Consultancy

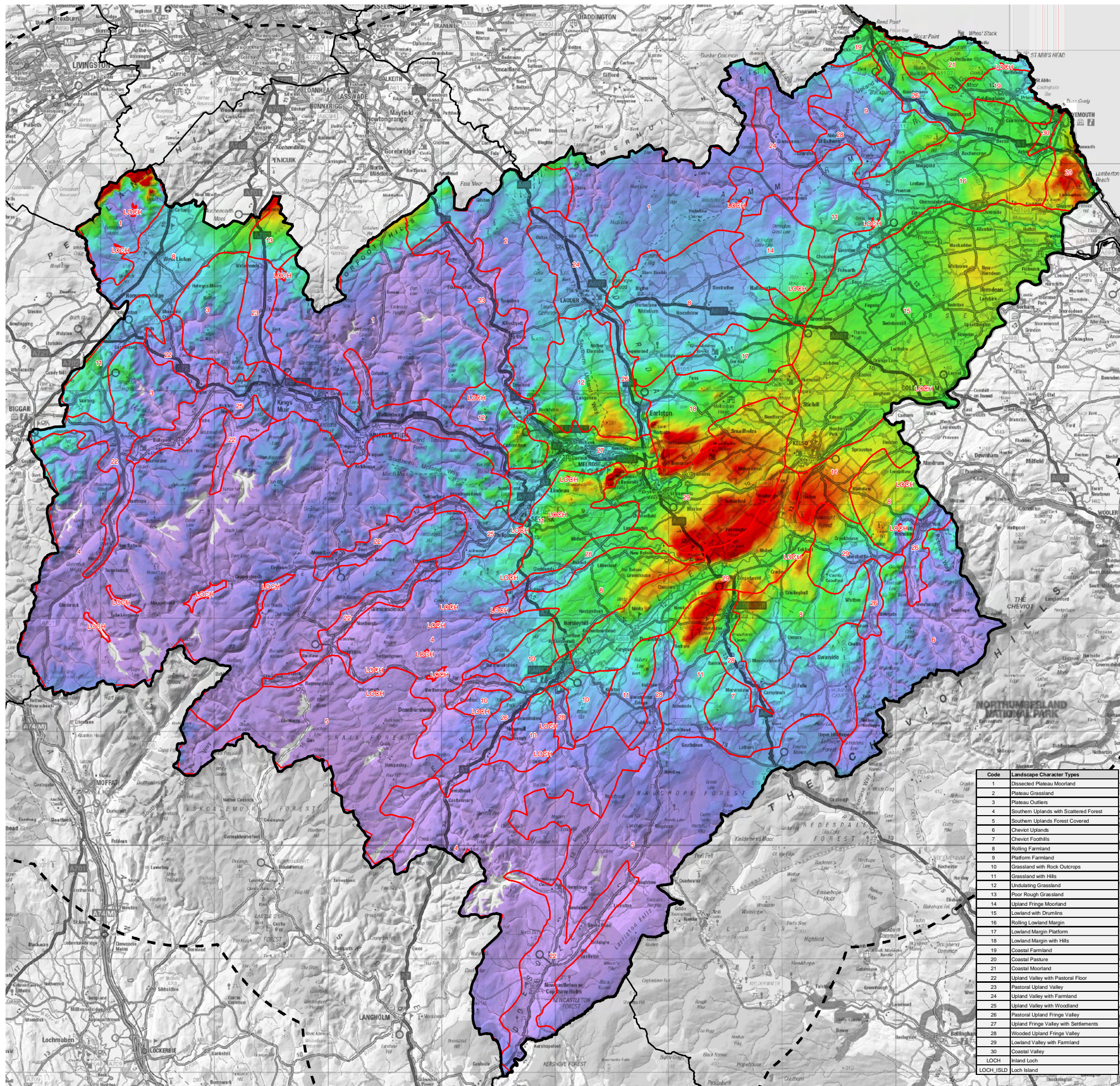
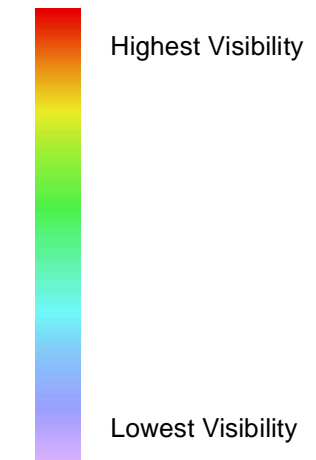
July 2013

7920_GIS_120

Legend

-  SBC Local Authority Boundary
-  Local Authority Boundary 15km Buffer
-  Other Local Authority Boundaries
-  Landscape Character Areas

ZTV:



Code	Landscape Character Types
1	Dissected Plateau Moorland
2	Plateau Grassland
3	Plateau Outliers
4	Southern Uplands with Scattered Forest
5	Southern Uplands Forest Covered
6	Cheviot Uplands
7	Cheviot Foothills
8	Rolling Farmland
9	Platform Farmland
10	Grassland with Rock Outcrops
11	Grassland with Hills
12	Undulating Grassland
13	Poor Rough Grassland
14	Upland Fringe Moorland
15	Lowland with Drumlins
16	Rolling Lowland Margin
17	Lowland Margin Platform
18	Lowland Margin with Hills
19	Coastal Farmland
20	Coastal Pasture
21	Coastal Moorland
22	Upland Valley with Pastoral Floor
23	Pastoral Upland Valley
24	Upland Valley with Farmland
25	Upland Valley with Woodland
26	Pastoral Upland Fringe Valley
27	Upland Fringe Valley with Settlements
28	Wooded Upland Fringe Valley
29	Lowland Valley with Farmland
30	Coastal Loch
LOCH	Inland Loch
LOCH_ISLD	Loch Island





Figure 4.4e

Visibility from Transport Routes
(150m high object)

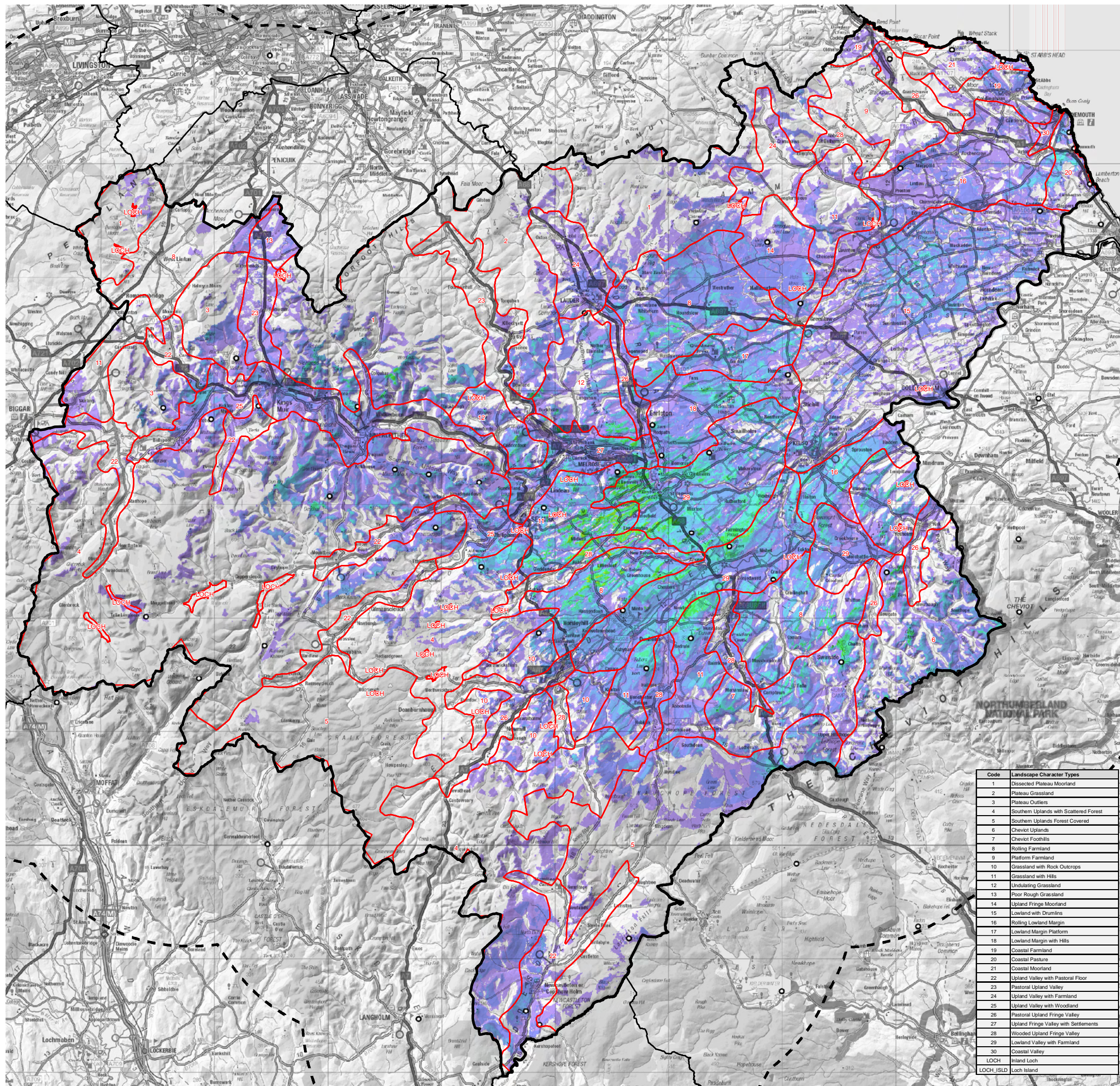
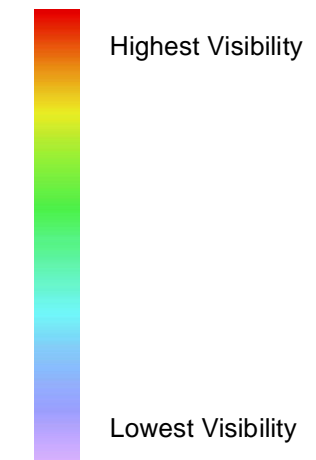


This map is reproduced from Ordnance Survey material with the permission of Ordnance Survey on behalf of the Controller of Her Majesty's Stationary Office © Crown Copyright 2013. Unauthorised reproduction infringes Crown copyright and may lead to prosecution or civil proceedings. 100017966

Legend

-  SBC Local Authority Boundary
-  Local Authority Boundary 15km Buffer
-  Other Local Authority Boundaries
-  Landscape Character Areas

ZTV:



Code	Landscape Character Types
1	Dissected Plateau Moorland
2	Plateau Grassland
3	Plateau Outliers
4	Southern Uplands with Scattered Forest
5	Southern Uplands Forest Covered
6	Cheviot Uplands
7	Cheviot Foothills
8	Rolling Farmland
9	Platform Farmland
10	Grassland with Rock Outcrops
11	Grassland with Hills
12	Undulating Grassland
13	Poor Rough Grassland
14	Upland Fringe Moorland
15	Lowland with Drumlins
16	Rolling Lowland Margin
17	Lowland Margin Platform
18	Lowland Margin with Hills
19	Coastal Farmland
20	Coastal Pasture
21	Coastal Moorland
22	Upland Valley with Pastoral Floor
23	Pastoral Upland Valley
24	Upland Valley with Farmland
25	Upland Valley with Woodland
26	Pastoral Upland Fringe Valley
27	Upland Fringe Valley with Settlements
28	Wooded Upland Fringe Valley
29	Lowland Valley with Farmland
30	Coastal Valley
LOCH	Inland Loch
LOCH_ISLD	Loch Island





Figure 4.5a

Visibility from Viewpoints
(0m high object)

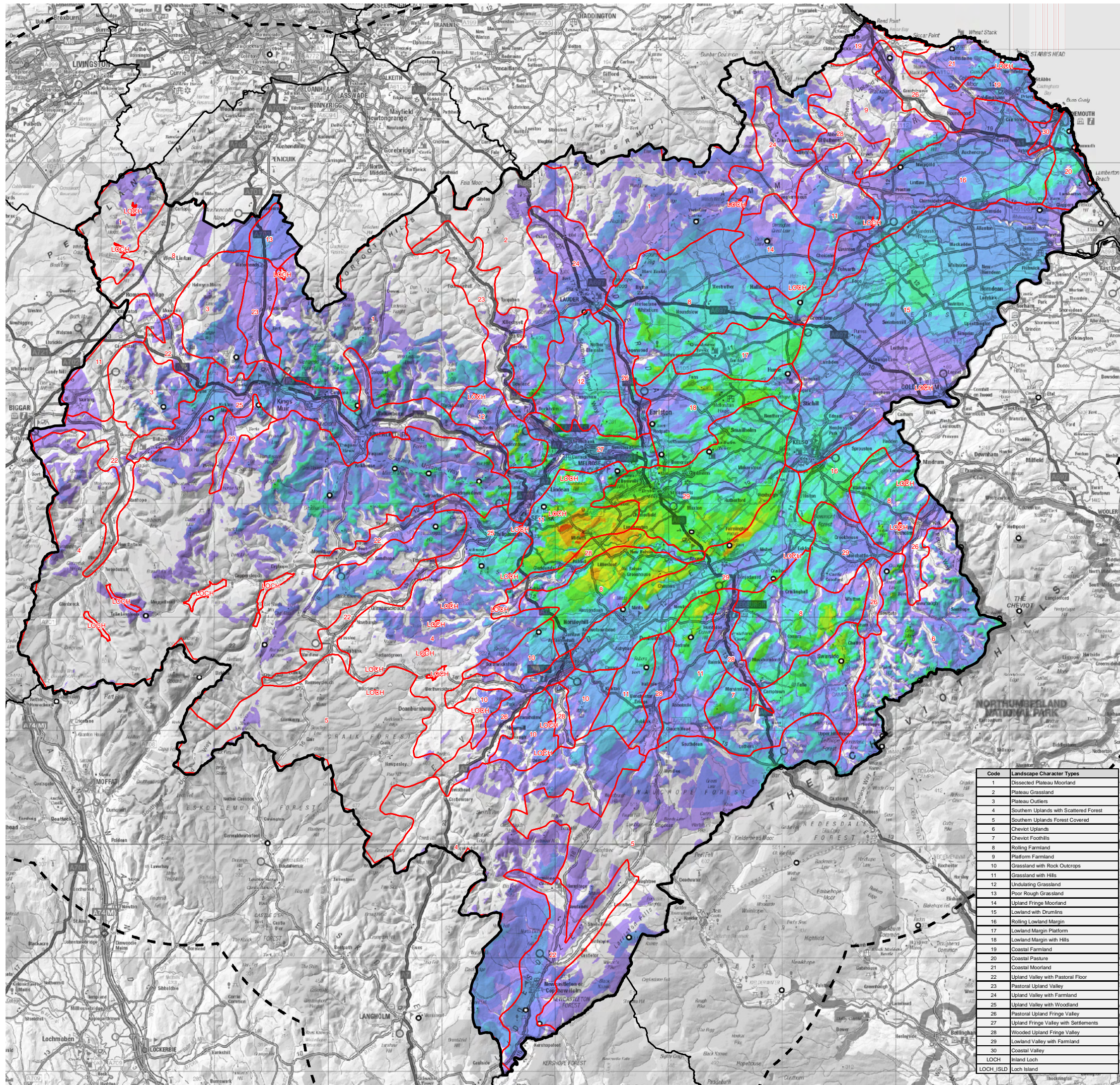
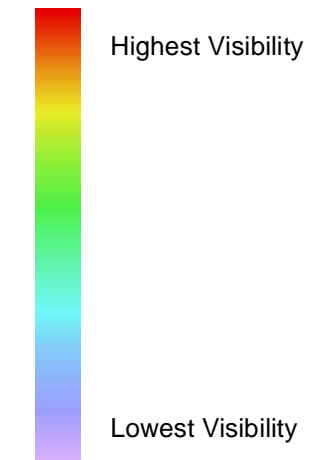


This map is reproduced from Ordnance Survey material with the permission of Ordnance Survey on behalf of the Controller of Her Majesty's Stationary Office © Crown Copyright 2013. Unauthorised reproduction infringes Crown copyright and may lead to prosecution or civil proceedings. 100017966

Legend

-  SBC Local Authority Boundary
-  Local Authority Boundary 15km Buffer
-  Other Local Authority Boundaries
-  Landscape Character Areas

ZTV:



Code	Landscape Character Types
1	Dissected Plateau Moorland
2	Plateau Grassland
3	Plateau Outliers
4	Southern Uplands with Scattered Forest
5	Southern Uplands Forest Covered
6	Cheviot Uplands
7	Cheviot Foothills
8	Rolling Farmland
9	Platform Farmland
10	Grassland with Rock Outcrops
11	Grassland with Hills
12	Undulating Grassland
13	Poor Rough Grassland
14	Upland Fringe Moorland
15	Lowland with Drumlins
16	Rolling Lowland Margin
17	Lowland Margin Platform
18	Lowland Margin with Hills
19	Coastal Farmland
20	Coastal Pasture
21	Coastal Moorland
22	Upland Valley with Pastoral Floor
23	Pastoral Upland Valley
24	Upland Valley with Farmland
25	Upland Valley with Woodland
26	Pastoral Upland Fringe Valley
27	Upland Fringe Valley with Settlements
28	Wooded Upland Fringe Valley
29	Lowland Valley with Farmland
30	Coastal Valley
LOCH	Inland Loch
LOCH_ISLD	Loch Island





Figure 4.5b

Visibility from Viewpoints
(25m high object)

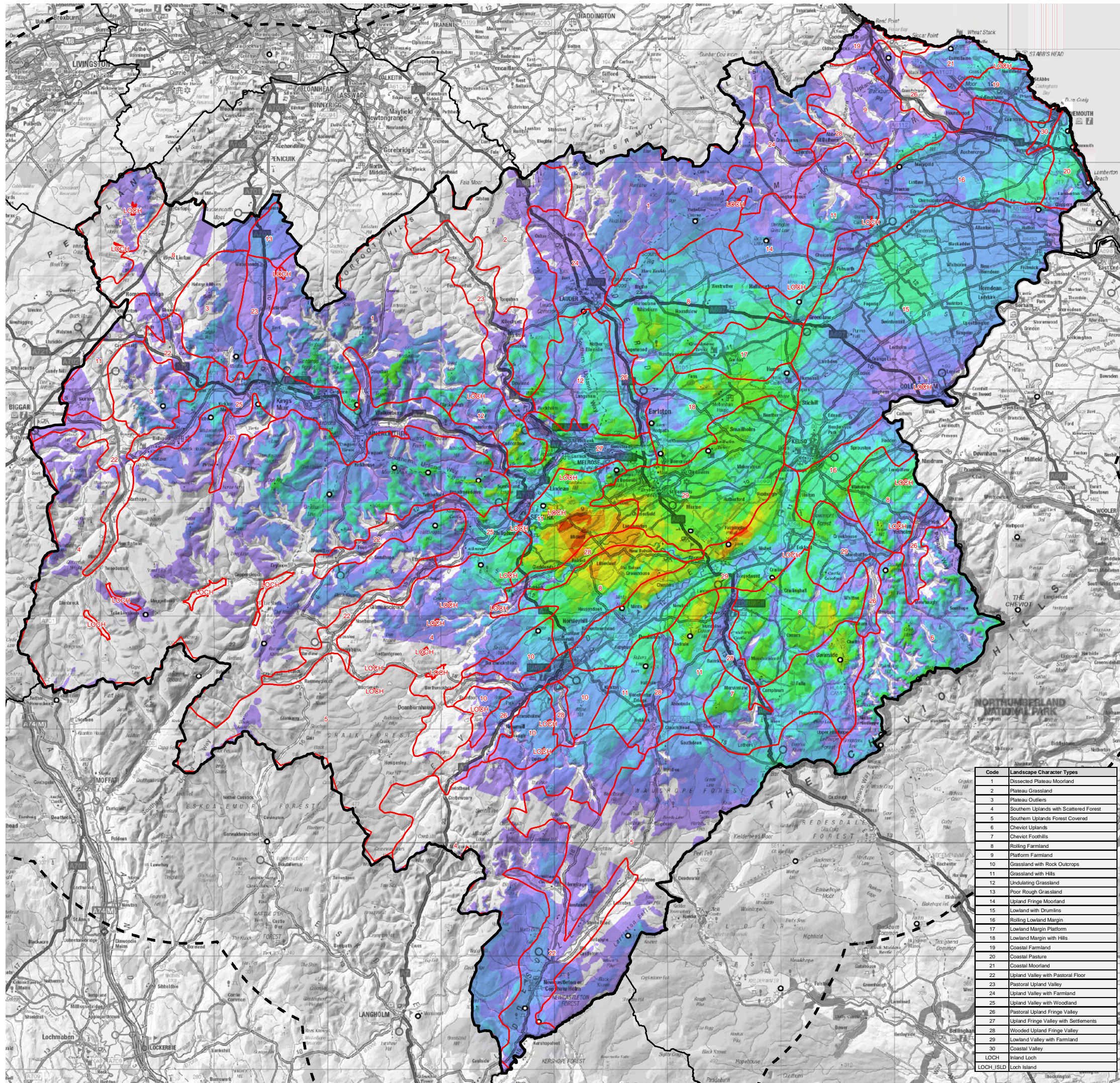
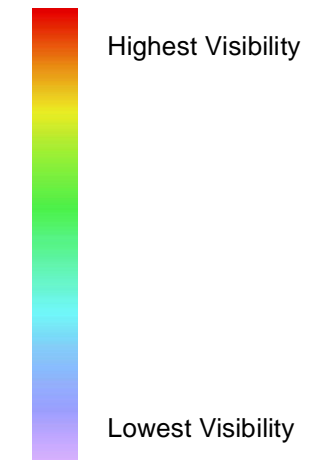


This map is reproduced from Ordnance Survey material with the permission of Ordnance Survey on behalf of the Controller of Her Majesty's Stationary Office © Crown Copyright 2013. Unauthorised reproduction infringes Crown copyright and may lead to prosecution or civil proceedings. 100017966

Legend

-  SBC Local Authority Boundary
-  Local Authority Boundary 15km Buffer
-  Other Local Authority Boundaries
-  Landscape Character Areas

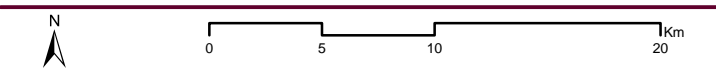
ZTV:



Code	Landscape Character Types
1	Dissected Plateau Moorland
2	Plateau Grassland
3	Plateau Outliers
4	Southern Uplands with Scattered Forest
5	Southern Uplands Forest Covered
6	Cheviot Uplands
7	Cheviot Foothills
8	Rolling Farmland
9	Platform Farmland
10	Grassland with Rock Outcrops
11	Grassland with Hills
12	Undulating Grassland
13	Poor Rough Grassland
14	Upland Fringe Moorland
15	Lowland with Drumlins
16	Rolling Lowland Margin
17	Lowland Margin Platform
18	Lowland Margin with Hills
19	Coastal Farmland
20	Coastal Pasture
21	Coastal Moorland
22	Upland Valley with Pastoral Floor
23	Pastoral Upland Valley
24	Upland Valley with Farmland
25	Upland Valley with Woodland
26	Pastoral Upland Fringe Valley
27	Upland Fringe Valley with Settlements
28	Wooded Upland Fringe Valley
29	Lowland Valley with Farmland
30	Coastal Valley
LOCH	Inland Loch
LOCH_ISLD	Loch Island

Figure 4.5c

Visibility from Viewpoints
(50m high object)







This map is reproduced from Ordnance Survey material with the permission of Ordnance Survey on behalf of the Controller of Her Majesty's Stationary Office © Crown Copyright 2013. Unauthorised reproduction infringes Crown copyright and may lead to prosecution or civil proceedings. 100017966

Scottish Borders Wind Energy Consultancy

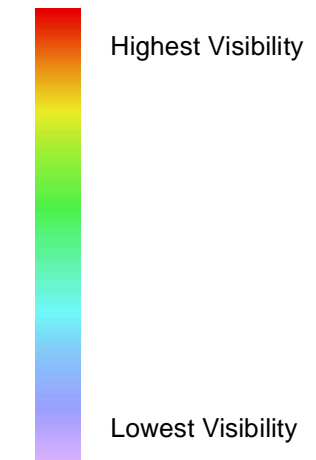
July 2013

7920_GIS_124

Legend

-  SBC Local Authority Boundary
-  Local Authority Boundary 15km Buffer
-  Other Local Authority Boundaries
-  Landscape Character Areas

ZTV:



Code	Landscape Character Types
1	Dissected Plateau Moorland
2	Plateau Grassland
3	Plateau Outliers
4	Southern Uplands with Scattered Forest
5	Southern Uplands Forest Covered
6	Cheviot Uplands
7	Cheviot Foothills
8	Rolling Farmland
9	Platform Farmland
10	Grassland with Rock Outcrops
11	Grassland with Hills
12	Undulating Grassland
13	Poor Rough Grassland
14	Upland Fringe Moorland
15	Lowland with Drumlins
16	Rolling Lowland Margin
17	Lowland Margin Platform
18	Lowland Margin with Hills
19	Coastal Farmland
20	Coastal Pasture
21	Coastal Moorland
22	Upland Valley with Pastoral Floor
23	Pastoral Upland Valley
24	Upland Valley with Farmland
25	Upland Valley with Woodland
26	Pastoral Upland Fringe Valley
27	Upland Fringe Valley with Settlements
28	Wooded Upland Fringe Valley
29	Lowland Valley with Farmland
30	Coastal Loch
LOCH	Inland Loch
LOCH_ISLD	Loch Island

Figure 4.5d

Visibility from Viewpoints
(100m high object)







This map is reproduced from Ordnance Survey material with the permission of Ordnance Survey on behalf of the Controller of Her Majesty's Stationary Office © Crown Copyright 2013. Unauthorised reproduction infringes Crown copyright and may lead to prosecution or civil proceedings. 100017966

Scottish Borders Wind Energy Consultancy

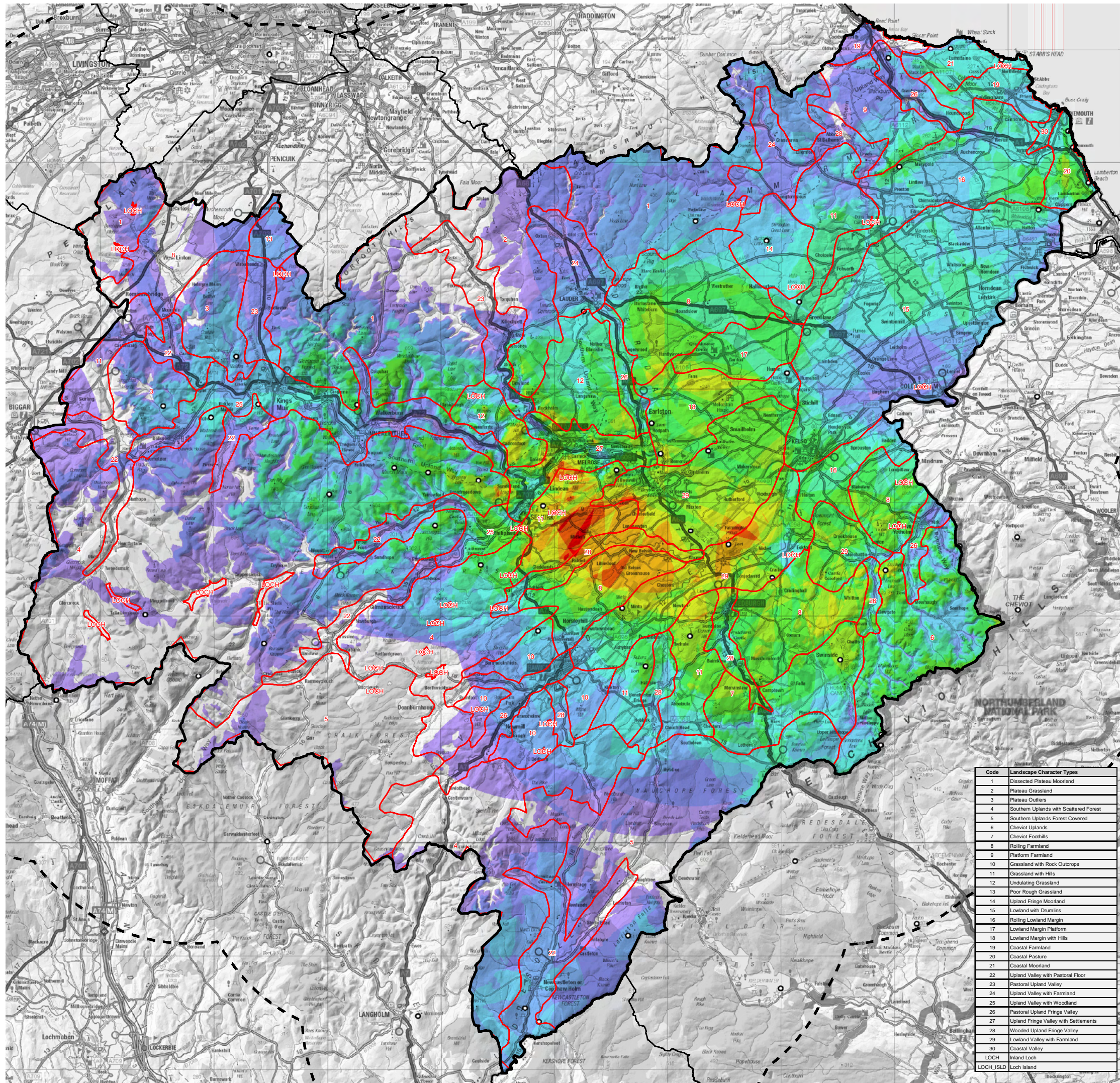
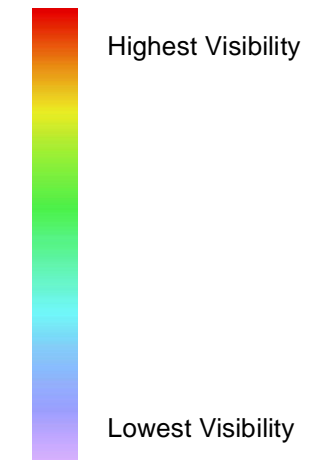
July 2013

7920_GIS_125

Legend

-  SBC Local Authority Boundary
-  Local Authority Boundary 15km Buffer
-  Other Local Authority Boundaries
-  Landscape Character Areas

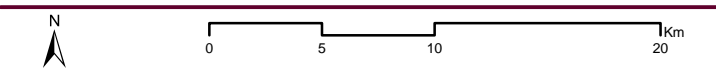
ZTV:



Code	Landscape Character Types
1	Dissected Plateau Moorland
2	Plateau Grassland
3	Plateau Outliers
4	Southern Uplands with Scattered Forest
5	Southern Uplands Forest Covered
6	Cheviot Uplands
7	Cheviot Foothills
8	Rolling Farmland
9	Platform Farmland
10	Grassland with Rock Outcrops
11	Grassland with Hills
12	Undulating Grassland
13	Poor Rough Grassland
14	Upland Fringe Moorland
15	Lowland with Drumlins
16	Rolling Lowland Margin
17	Lowland Margin Platform
18	Lowland Margin with Hills
19	Coastal Farmland
20	Coastal Pasture
21	Coastal Moorland
22	Upland Valley with Pastoral Floor
23	Pastoral Upland Valley
24	Upland Valley with Farmland
25	Upland Valley with Woodland
26	Pastoral Upland Fringe Valley
27	Upland Fringe Valley with Settlements
28	Wooded Upland Fringe Valley
29	Lowland Valley with Farmland
30	Coastal Valley
LOCH	Inland Loch
LOCH_ISLD	Loch Island

Figure 4.5e

Visibility from Viewpoints
(150m high object)



This map is reproduced from Ordnance Survey material with the permission of Ordnance Survey on behalf of the Controller of Her Majesty's Stationary Office © Crown Copyright 2013. Unauthorised reproduction infringes Crown copyright and may lead to prosecution or civil proceedings. 100017966

APPENDIX 4: WIND TURBINES IN SCOTTISH BORDERS AND SURROUNDING AREA

Wind Turbine Database as at February 2013 (Consented & Proposed) Showing Turbine Height Bands (pink=very large; orange=large; yellow=medium) (see Figs. 5.1 and 5.2 for locations)

Consented and Operational Turbine Developments in the Scottish Borders

Turbine Name	Number of Turbines	Tip Height	Landscape Character Type
3 Bogangreen Cottages	1	30.00	Coastal Farmland
Buskin Farmhouse	2	30.00	Coastal Farmland
Crosslaw Farm	2	30.00	Coastal Farmland
Lumsdaine Farm	2	30.00	Coastal Moorland
Castlemains Farmhouse	3	47.00	Grassland with Hills
Land S of Whitsome	2	27.10	Lowland with Drumlins
Nethermains Farm	1	32.00	Lowland with Drumlins
Easter Howlands Farm	2	47.10	Lowland with Drumlins
Land NW of Symington Mains Farm	1	27.00	Pastoral Upland Valley
Whitslaid Farm	2	37.58	Rolling Farmland
Lintlaw Farm	2	31.60	Rolling Lowland Margin
Larkhill	1	27.00	Undulating Grassland
Langshaw Farm	1	39.50	Undulating Grassland
Coldingham Moor	22	76.00	Coastal Farmland
Bowbeat	24	80.00	Dissected Plateau Moorland
Crystal Rig (Phase I & IA)	25	99.00	Dissected Plateau Moorland
Black Hill	22	78.00	Grassland with Hills
Dun Law (Phase I)	26	67.50	Plateau Grassland
Dun Law (Phase II)	35	75.00	Plateau Grassland
Brockholes	3	84.00	Platform Farmland
Land N/E of Greenburn Farm	1	54.00	Rolling Lowland Margin
Pressmains Farm	1	60.98	Rolling Lowland Margin
Pinnaclehill Industrial Estate	1	70.00	Rolling Lowland Margin
Land N/E of Weirburn House	2	54.00	Wooded Upland Fringe Valley
Carcant	3	107.00	Dissected Plateau Moorland
Crystal Rig (Phase II)	8	110.00	Dissected Plateau Moorland
Crystal Rig (Phase II)	13	125.00	Dissected Plateau Moorland
Fallago Rig Mark II	7	110.00	Dissected Plateau Moorland
Fallago Rig Mark II	46	125.00	Dissected Plateau Moorland
Halkburn / Longpark	19	100.00	Plateau Grassland
Hoprigshiels	2	125.00	Platform Farmland
Toddleburn	12	125.00	Plateau Grassland
Langhope Rig	10	100.00	Southern Uplands with Scattered Forest
Glenkerie	11	105.00	Southern Uplands with Scattered Forest

Proposed Turbine Developments in the Scottish Borders

Turbine Name	Number of Turbines	Tip Height	Landscape Character Type
Falla Knowe Farm	1	45.90	Coastal Farmland
Cedar Cottage	2	34.40	Grassland with Hills
Stewards Cottage	1	46.10	Grassland with Hills
Nether Huntly Wood House	1	45.90	Lowland Margin Platform
Fellowhills Farmhouse	1	44.60	Lowland with Drumlins
Birkenside Farmhouse	1	36.20	Pastoral Upland Fringe Valley
West Mains	1	33.60	Rolling Farmland
Helenslea, Primesidemill	2	45.00	Rolling Farmland
Thirlstane Farmhouse	1	45.50	Rolling Farmland
Woodend Farm	1	25.00	Rolling Lowland Margin
Kirkburn House	1	40.00	Rolling Lowland Margin
Sunnyside Farm	1	45.90	Rolling Lowland Margin
Baddinsgill Gamekeepers Cottage	1	78.00	Dissected Plateau Moorland
Allanshaws Farm (Shawpark)	9	98.10	Plateau Grassland
Standhill Farm Cottage	1	73.00	Rolling Farmland
Bassendeanhill Farm	1	77.00	Rolling Farmland
Penmanshiel Farm	15	100.00	Coastal Farmland
Neuk Farm	2	110.00	Coastal Farmland
Hoprigshiels	1	125.00	Coastal Farmland
Blythe Farm (Brunta Hill)	10	126.50	Dissected Plateau Moorland
Gilston	7	115.00	Plateau Grassland
Rowantree	23	125.00	Plateau Grassland
Land S/W of Monashee Farm	6	119.00	Platform Farmland
Quixwood Farm	20	126.25	Platform Farmland
Blackburn Farm	6	126.50	Platform Farmland
Whitton	6	110.00	Rolling Farmland
Corsbie Moor	9	126.50	Rolling Farmland
Earlshaugh	36	125.00	Southern Uplands with Scattered Forest
Land S/W of Whitslade (Barrel Law)	8	125.00	Southern Uplands with Scattered Forest
Clyde Extension	7	142.00	Southern Uplands with Scattered Forest

APPENDIX 5: ASSESSMENT OF LANDSCAPE CAPACITY FOR LANDSCAPE CHARACTER TYPES

1. Dissected Plateau Moorlands

Landscape Character	Criteria /Thresholds
Scale	Large scale plateau like landscape with some more defined hills in the Western Pentlands area. Low
Landform	Gently undulating plateau landscape formed by the summits of level topped ridges and hills separated by steep sided valleys creating topographical containment within the central areas. Hills and steep valleys are more prominent in the West Pentlands area. Low (West Pentlands area. Medium)
Pattern	Simple landscape pattern with matrix of heather moorland and acid grassland with blanket bog on some higher elevations. Pockets of substantial woodland planting can also be found within this landscape character area creating woodland blocks within the landscape. Low/ Medium West Pentlands contains a number of farmsteads, reservoirs and agricultural farmlands. Medium
Development	Current settlement pattern is predominantly sparsely settled with individual farmsteads and dwellings. Low . West Pentlands area has slightly more development within it. Medium
Quality	Many areas are unaffected by development creating a wilderness exposed quality. High
Elements and Features	Distinctive and prominent rounded hills, the edges of which create a distinctive skyline within the vicinity when viewed from lower elevations. The Western Pentlands area also contains 2no. reservoirs. Medium/ High
Context	Surrounding landscapes are lowland agricultural valley landscapes with greater human habitation the outer slopes of these areas will be more visible than the interior. Medium
OVERALL RATING	Low/ Medium West Pentlands area Medium

Visual Sensitivity	Criteria
Receptors	Low number residential receptors within the Moorfoot Hills LCA, some minor roads cross this area. Low/ Medium The Southern Upland Way passes through the southern area of the Lammermuir LCA. The West Pentlands LCA is more accessible as a wilderness landscape to a larger number of receptors with local walking routes found within this LCA. High/ Medium .
Internal Visibility	Open unobstructed internal visibility from the high points of the plateau, internal visibility will decrease within valleys cutting into the plateau, outer slopes will have views looking down into the valleys. Medium
External Visibility	Peripheries will be widely visible from surroundings and potentially from a distance, internal areas will be less visible or not visible when viewed from outwith the LCA due to topographical containment created by the upland plateau landscape. Medium (West Pentlands area has a much greater external visibility due to it's proximity to Edinburgh and settlements within Midlothian and East Lothian. High)
OVERALL RATING	Medium Western Pentlands and Lammermuir Hills LCA has a Medium/ High rating

Landscape Value	Criteria
Designations	The Western Pentlands Character area is influenced by the Pentlands Regional Park, which is located to the north and north west of the LCA. The Lammermuir and Moorfoot Hills contain Scheduled Ancient Monuments, SLA and the non landscape designation of a SSSI. High
Community value	Areas within the Lammermuir Hills, Midland Valley and Moorfoot Hills will all be used by the local population and by visitors as a recreational area. The Lammermuir Hills area includes the Southern Upland Way, the Moorfoot Hills area includes the NCN Route 1 and to the north east and north west lie's the Western Pentlands LCA lies the Pentlands Regional Park. Western Pentlands and Lammermuir Hills LCAs Medium/ High Moorfoot Hills LCA Medium
Cultural value	No designated viewpoints but views will be afforded from informal paths and the Southern Upland Way (Lammermuir Hills LCA), some locations of interest, Hillforts and Cairns. Medium Lammermuir Hills LCA will be Medium/ High due to the Southern Upland Way
Perceptual	Tranquil, windswept with a wilderness character. High
OVERALL RATING	Moorfoot Hills LCA Medium/ High Western Pentlands LCA has a High Rating due to the greater prominence and recreational value. The Lammermuir Hills LCA will also have a High rating in the southern area influenced by the Southern Upland Way.

2. Plateau Grassland

Landscape Character	Criteria /Thresholds
Scale	Large scale landscape with areas of farmland grasslands reminiscent of platform farmlands. Low/ Medium
Landform	Gently undulating/ rolling large relatively low dome shaped hills. Low/ Medium
Pattern	Simple land pattern with areas of heather moorlands on more elevated locations and blocks of conifer plantation woodlands. Outer less elevated slopes have rough pasture fields enclosed by simple dry stone walls. Low/ Medium
Development	Sparsely developed with individual farmsteads and dwellings located on outer slopes. Low/ Medium
Quality	Open agricultural areas on outer slopes and open heather moorlands creating a strong rural character. High
Elements and Features	Landscape has convex outer slopes that contrast with the gentler undulating land around this character type. Pylons, forestry, minor roads and access tracks, A roads, historic cairns and cultivation terraces and more recent windfarm development are all present within this landscape. Medium
Context	Either side of this character area are busy A roads and small to medium sized settlements that will have a view onto the outer slopes and high points of this character area, views into the character area will be limited to the outer slopes from the settlements and busy roads. Medium/ Low
OVERALL RATING	Medium

Visual Sensitivity	Criteria
Receptors	Within the site there are a low number of potential receptors with individual farmsteads and dwellings present. The busy A roads and settlements outwith the site will potentially have a limited view of any development within the character area. The northern slopes have a view over Edinburgh, Lothians, East Lothian and Fife (distant and only on a clear day). Low/ Medium
Internal Visibility	The gently rolling/ undulating broad hill landscape frames views across wide valleys as well as screening views from lower elevations looking into the LCA. Medium
External Visibility	There will be clear views looking from the lower valleys to the east and west of turbine development on the edges of this character area and partial views of turbine development within the central areas of this LCA from the settled valleys either side of this upland spur. There are wide panoramic views over Edinburgh (and on a clear day Fife) as well as the Lothian's from the northern slopes of this LCA. The Southern Upland Way is located to the south east of this LCA, developments in the southern section of this LCA will be visible from this long distance path. There is currently a number of windfarm developments within this LCA resulting in cumulative impacts associated with multiple developments. Medium/ High
OVERALL RATING	Medium

Landscape Value	Criteria
Designations	There are no national or local landscape designations within this character area, there are however a few scheduled ancient monuments and on the outer slopes SBC designated Landscapes. Low/ Medium
Community value	There maybe informal paths used by local residents within this area, there are no long distance paths or national cycle routes. Low
Cultural value	There are a few SAM's present in this area: Cairns, Hill forts and historic cultivation terraces present. Low/ Medium
Perceptual	This landscape has an open rural agricultural undulating character with areas that have more of a wilderness character. Medium/ High
OVERALL RATING	Low

3. Plateau Outliers

Landscape Character Sensitivity	Criteria /Thresholds
Scale	Large scale with more intimate localised areas within incised river valleys. Low/ Medium
Landform	Large undulating hills forming high ridgelines divided by deep valleys and glens. Medium
Pattern	Simple, field enclosures on lower slopes and rough grassland grazing on higher slopes with heather moorland. There are two large plantation woodlands within the character areas creating dense conifer plantation blocks. Low/ Medium
Development	There is little development within the character areas, a few individual farmsteads and dwellings are present on the lower sheltered slopes. Low
Quality	The area has a rural, undeveloped, exposed quality. High
Elements and Features	There are walking routes within this LCA, some lead to viewpoints, there are deep incised valleys and glens with small to medium sized burns, historical forts, settlements and cairns are present. High
Context	There are busy A and B roads around these character areas with small settlements and an increase in farmsteads within the more sheltered valleys around the character areas that will have a view of the outer slopes only. Medium
OVERALL RATING	Medium

Visual Sensitivity	Criteria
Receptors	The recreational walkers will have views of the interior of this character area. Owners of the sparsely distributed farmsteads and dwellings around the character areas along with road users will have views to the peripheral slopes of these character areas. Medium/ High
Internal Visibility	There are open long distance views from the hill tops and enclosed views within the valleys, both will be over undeveloped rural grazing and moorland with a wilderness character. Medium
External Visibility	There will be views to and from the high points onto the surrounding glens and valleys as well as views from the surrounding roads and small settlements onto the prominent peripheral slopes forming a skyline feature. Medium/ High
OVERALL RATING	Medium/ High

Landscape Value	Criteria
Designations	This Broughton Heights LCA is predominantly covered by a SLA with the southern area designated as part of a larger NSA, the south eastern tip of the Eddleston/ Lyne Interfluve LCA is part of a SLA and NSA. Both areas contain SAMs and Listed Buildings . High
Community value	There are a number of footpaths within the character area and high viewpoints over the surrounding countryside. High
Cultural value	The character area contains a number of historic settlements, forts and cairn sites. Medium
Perceptual	The character area has no roads within it and only the occasional farmstead or dwelling on the lower more sheltered slopes of the hills, the open undulating hills and glens create a wilderness quality. High
OVERALL RATING	High/ Medium Broughton Heights LCA will have a High rating due to the NSA and SLA designation

4. Southern Uplands with Scattered Forest

Landscape Character Sensitivity	Criteria /Thresholds
Scale	Large scale upland character. Undulating plateau creates enclosure in broad valleys that contrast with the more elevated undeveloped remote hill tops, elevated areas and ridgelines within this LCA. Medium/ Low
Landform	Large plateau like landscape of upland undulating dome shaped hills separated by incised river valleys. Relatively simple landform with rough grasslands, moorlands and conifer plantation woodlands. Medium/ Low
Pattern	Simple landscape pattern of open rough grazing, open heather moorland with conifer plantation woodlands with reservoirs. More sheltered valley areas creating strong blocks of dense conifer woodland and provide communication routes through the Plateau. Medium
Development	Sparsely populated with the occasional farmstead in lower sheltered areas, valleys contain some important 'A' road connections to neighbouring Dumfries and Galloway and England. Low/ Medium
Quality	Open, rural, exposed windswept area with a wilderness character. High
Elements and Features	Few features, the occasional road with an upland character or reservoir/ Loch are present. The plateau landscape is drained by numerous small burns that feed into larger burns and rivers (River Tweed and its tributaries). Medium
Context	There are no settlements and the occasional farmstead/ dwelling that may have a view into the character area, the high points of the plateau are sometimes prominent from the valleys and flatter areas below. Low/ Medium
OVERALL RATING	Medium

Visual Sensitivity	Criteria/ Thresholds
Receptors	There are very few individual farmsteads or dwellings, the occasional road within the character areas will increase receptors locally as will local footpaths. Low Broadlaw Group LCA contains the Southern Upland Way. High/ Medium
Internal Visibility	Long distance open views from the high points. Within the LCA views will generally be limited by the interlocking spurs of the plateau. Medium The Southern Upland Way within the Broadlaw Group will extend visibility within the upland areas. High/ Medium
External Visibility	There maybe limited views from the nearest settlements and roads within the valleys and lower elevations. Due to the topographical containment created by these broad areas of plateau. Low/ Medium The eastern area of the Broadlaw Group LCA will have increased external visibility as settled valleys cut into this LCA. Medium
OVERALL RATING	Medium/ Low Broadlaw Group has a High/ Medium overall rating due to the Southern Upland Way and the settled valleys cutting into this LCA that increase receptors, recreational use and internal/ external visibility.

Landscape Value	Criteria/ Thresholds
Designations	The whole of the Broadlaw Group LCA is fully within an SLA and the northern part is part of a larger NSA, it also contains a large SSSI. Although not a landscape designation, the southern tip of Broadlaw Group area is within the Eskdalemuir seismological Array exclusion zone. The Dun Knowe Group and the Cauldcleuch Head group are not part of a SLA or NSA. Low Broadlaw Group has a High rating due to the SLA and NSA designation.
Community value	The Southern Upland Way is within the Broadlaw Group LCA. Local footpaths, fishing Lochs, picnic areas and car parking areas facilitating community use are within all of the LCA. High/ Medium Broadlaw Group has a High rating due to the Southern Upland Way.
Cultural value	There are historic settlement and fort sites on the lower slopes of the plateau, the open exposed rural character will be a highly valued quality by the local and regional population and a draw for tourists. The Broadlaw Group LCA contains the Southern Upland Way increasing its cultural value. High
Perceptual	This is an upland landscape with a matrix of woodland and moorland creating a wilderness character that will be highly valued by the local population and visitors to the Scottish Borders who will potentially use this area recreationally. High
OVERALL RATING	High

5. Southern Uplands Forest Covered

Landscape Character Sensitivity	Criteria /Threshold
Scale	Large simple Upland Character interrupted by isolated peaks above the large and open areas of moorland/ forestry. Low/ Medium
Landform	Simple landform of gently undulating rounded hills with enclosed valleys between high points. Medium/ Low The Wauchope/ Newcastleton area has a more open simple landform. Low
Pattern	Large commercial forestry plantations cover much of this character area, This can be divided into separate forestry areas; some felled, some mature and areas of younger trees all of which create strong localised boundaries within this LCA where edges are viewed. Areas of open moorland and rough grazing are found in this character area. Medium
Development	There is sparse development in this character area with few farmsteads and the occasional upland rural road passing through this landscape. Low
Quality	This landscape has a rural upland character, the plantation woodlands add to this quality, however recently felled areas of forestry could locally lower this quality. Medium/ High
Elements and Features	There are a few viewpoints along the upland rural roads that cross the character areas. A few cycle routes pass through this area and there are a few core paths as well as cultural heritage sites, cairn's stone circles and sites of settlements can all be found. Medium sized rivers flow within gently undulating valleys which generally contain the road network. Medium
Context	Strong edges and boundaries to intact areas of woodland create a backdrop when seen from surrounding character areas as well as from roads within the site. Medium
OVERALL RATING	Medium

Visual Sensitivity	Criteria
Receptors	Few residential dwellings within this character area, there are occasional roads within the character areas where views will be afforded over valleys to wooded hills and there are a few footpaths within the area. Low Receptors increase significantly around the Carter Bar A68 viewpoint area of the Wauchope/ Newcastleton LCA. Medium/ High
Internal Visibility	Hills and woodland within the area limits internal visibility. Within the Craik LCA there is a picnic area and tourist facilities. Low/ Medium
External Visibility	There are rural roads that will provide a degree of external visibility, however the wooded character and gently undulating hilly context will limit this. The Upland landscape and topography creates containment and there is lower intervisibility from settlements, transport routes and viewpoints. Low At the Carter Bar area on the A68/ border viewpoint with England there is a panoramic sensitive viewpoint over the borders region creating localised High sensitivity.
OVERALL RATING	Low Localised area with a High rating at the Carter Bar A68 border viewpoint with the Wauchope/ Newcastleton LCA .

Landscape Value	Criteria
Designations	Within the Wauchope Forest area there is a SSSI located in a small area in the north east and a few listed buildings, both areas have a number of SAMs. The southern and western areas of the Craik area is within the Eskdalemuir Seismological array 10km exclusion area. Medium/ High Wauchope/ Newcastleton area Medium .
Community value	Limited recreational value, few core paths, Southern Upland Way enters a small area in the western section of the Craik Forest area. Low/ localised pockets within each area of Medium
Cultural value	Forested upland areas could be perceived as having a modern cultural value as a 'wilderness', however to the trained eye this is planned development. There are a few historical cairns, settlements and stone circles present. Medium The Carter Bar A68 viewpoint/ England Border has a High cultural value.
Perceptual	The forested nature of this landscape could be perceived as a wilderness, despite it's planned nature. Medium/ High
OVERALL RATING	Medium/ High Wauchope/ Newcastleton area has an overall rating of Medium , however the Carter Bar viewpoint/ A68 England Border area has a High rating.

6. Cheviot Uplands

Landscape Character Sensitivity	Criteria /Thresholds
Scale	Relatively simple upland undulating landscape of steeply sided hills with incised river valleys. Low/ Medium
Landform	Undulating upland landscape with steeply sided valleys, hills create ridgelines and spurs. Medium
Pattern	Predominantly rough grassland with some areas of heather moorland, the lower elevations within the sheltered valleys contain simple enclosed grazing fields with the occasional shelterbelt of mature deciduous tree planting. Medium
Development	There is the occasional farmstead located within the sheltered valleys along minor single track roads. The Pennine Way enters this LCA. Medium/ Low
Quality	This is an undulating valley and hill landscape, sparsely populated, higher ground has a rural open exposed semi wild character. Medium
Elements and Features	The interlocking hills create strong ridge lines and spurs between which are strong valley landscapes with burns and small rivers. High
Context	The high points within this landscape will be more visible from the surrounding context, which is a National Park to the south and east , the Pennine Way enters the LCA and loosely follows the English Border with Scottish Borders Council. However this LCA is a sparsely inhabited landscape and contains a few minor rural roads. Medium/ High
OVERALL RATING	Medium/ High

Visual Sensitivity	Criteria
Receptors	There are few farmsteads and dwellings, the Pennine Way loosely follows the English Border and enters the site and the Northumberland National Park is located immediately to the east and south of this LCA. Medium/ High
Internal Visibility	Interlocking hills creating spurs and ridgelines will reduce internal views, the presence of the Pennine Way will increase receptors and allows for views over this landscape. Medium
External Visibility	There will be views from the minor roads around this character area and the Pennine Way that follows the English Boundary as well as from promoted regional viewpoints in the Northumberland National Park (Cheviot Hill). This LCA generally has a lower intervisibility created by topographical containment. Medium/ High
OVERALL RATING	Medium/ High

Landscape Value	Criteria
Designations	The whole of the character area is part of a SLA that adjoins and is continuous with the Northumberland National Park in England, relatively high concentration of SAMs. High
Community value	There are a number of local footpaths along ridgelines, the Pennine Way loosely follows the English Border and enters the character area. High
Cultural value	There is a high concentration of historic fort, settlement and cairn sites within the character area, the Pennine Way follows the border with England and the Northumberland National Park in England borders this LCA. High
Perceptual	This character area has a strong upland rural character with a strong landform character of ridges and valleys with views from promoted regional viewpoints in Northumberland National Park and the Pennine Way follows the Border with England. High
OVERALL RATING	High

7. Cheviot Foothills

Landscape Character Sensitivity	Criteria /Thresholds
Scale	Medium scale landscape. Medium
Landform	Undulating upland landform with broad sloping areas and broad flat platform areas enclosed by hills and plateau edges. High/ Medium
Pattern	Simple enclosed grazing fields with more open rough grassland areas there are areas of commercial plantation forestry creating blocks of dense woodland. Medium
Development	There are a greater number of individual farmsteads and small settlements/ groups of individual dwellings and a greater number of minor roads. However this is still a relatively sparsely populated landscape. Medium
Quality	This landscape has an open rural upland character and is broadly enclosed by the higher hills of character areas to the south and east. This forms the middle distance view from Carter Bar/ A68 English Border viewpoint forming a high quality view and first impressions of SBC. Medium/ High.
Elements and Features	There are simple enclosed grazing fields, some with shelterbelts and larger areas of commercial conifer plantations. There are a number of medium sized hills drained by burns and small rivers. There is also a larger number of historic sites with forts, settlements, Cairns and roman camp sites within the character area. Dere Street was a roman road, today this is a long distance footpath. High
Context	There is locally large sized settlement to the north west (Jedburgh) that may have a view of the high points within the character area. High points to the east and south will look over this landscape. The majority of this area is sparsely populated. There will be views from the popular Carter Bar/ A68 English Border viewpoint over this landscape. High
OVERALL RATING	Medium/ High

Visual Sensitivity	Criteria
Receptors	There are sparsely distributed individual farmsteads and dwellings with the occasional larger grouping of dwellings and a number of minor and more important A roads that will be receptors within this landscape. There is the Dere Street historical route, now a footpath, within this LCA and the popular Carter Bar/ A68 English Border viewpoint overlooking this landscape. This provides an important first impression of the Scottish Borders and Scotland from England. High
Internal Visibility	There are medium distance views within this landscape across the broadly sloping areas framed by the more rolling or gently undulating areas. The broad undulating landscape creates pockets of containment. Medium
External Visibility	There will be views to and from the high points to the east and south that will overlook the character area, the town of Jedburgh to the north west may have limited views of the high points within the character area. There will be views over this landscape from the Carter Bar/ A68 England/ Scotland viewpoint. High
OVERALL RATING	High

Landscape Value	Criteria
Designations	The eastern area of the character area is within a larger SLA, the character area contains a number of SAMs and listed buildings. Medium/ High
Community value	The character area contains a number of cycle routes and core paths, this includes the Dere Street historical route. Medium
Cultural value	There are a number of historic sites, including a roman fort and sites of historic settlements, forts and cairns. The Carter Bar viewpoint on the England/ Scotland Border will provide views over this landscape and provide a first impression of Scotland to visitors. High
Perceptual	The landscape has an upland farmland character, perceived as rural and will provide a first impression of Scotland to visitors from the Carter Bar viewpoint on the English Border. High
OVERALL RATING	High/ Medium

8. Rolling Farmland

Landscape Character Sensitivity	Criteria /Thresholds
Scale	Gently rolling transitional mid lowland/ upland landscapes. Medium/ Low
Landform	Gently rolling, undulating and enclosed at locations forming low gently sloping hills and isolated almost incised valleys. Medium
Pattern	There is a strong rural farmland pattern of enclosed arable and grazing fields with established hedgerows shelterbelts and small areas of broadleaved woodland. Upland more elevated areas have rough exposed grazing grassland with small areas of conifer plantation woodland. Medium/ High
Development	There is a greater concentration of farmsteads, individual dwellings and small settlements within this character area than higher more exposed areas. A number of busy A roads pass through these areas. Medium/ High
Quality	The landscape is intact as an agricultural landscape with a strong sense of field enclosure. Medium/ High
Elements and Features	There are numerous established hedges and established broadleaved shelterbelts as well as some commercial plantation woodlands, locally prominent high points and gentle valleys containing small burns and rivers. The Westruther Platform contains the Southern Upland Way in the north western area of the LCA. Medium/ High
Context	These character areas are generally located under areas of higher ground and will be fairly prominent from these higher locations. The Oxnam area contains the eastern area of Jedburgh and therefore the localised area to the east of this settlement will be more visible from this medium sized settlement, outside this area the sensitivity will be medium. Medium
OVERALL RATING	Medium/ High

Visual Sensitivity	Criteria
Receptors	There are a number of individual farmsteads and dwellings present in these character areas, larger settlements are found within the lower elevations of the main river valleys. There are a number of busy roads and minor roads within these character areas as well as local and core footpaths and cycleways. Medium/ High The Oxnam area has fewer receptors, sparsely distributed farmsteads and dwellings east of Jedburgh. The majority of this area will have a Medium Sensitivity with a small area of High sensitivity in the immediate vicinity of Jedburgh.
Internal Visibility	The gently rolling and broad gentle sloping landform will provide mid to long range views across the landscape, in places these are restricted by established shelterbelts and woodlands as well as intervening high points of local prominence, from which long distance views are afforded The Westruther Platform LCA contains the Southern Upland Way which will slightly increase internal and external visibility. Medium/ High
External Visibility	Each individual area within this character area has an adjoining character area of higher ground from which there will be views into the character area. The flatter broadly sloping areas will also be more visible. Medium/ High
OVERALL RATING	Medium/ High

Landscape Value	Criteria
Designations	The West Linton Synclinal Belt (Midland Valley) section is partly within a SLA, this area also contains a SSSI and ancient woodland as well as listed buildings. The Lempitlaw area contains Listed Buildings, the Oxnam area contains listed buildings and a small area of a larger SLA and the Minto Hills area contains a small section of a larger SLA and listed buildings. The Westruther Platform LCA contains a number of SBC designated landscapes (however not on the inventory of Gardens and Designed Landscapes do provide an indication of landscape quality). High/ Medium
Community value	All areas contain local path networks and cycle routes. The Westruther Platform contains the Southern Upland Way in the western area of the LCA. Medium/ High
Cultural value	There are ancient woodlands present as well as sites of historic forts, settlements and Cairns. Medium/ High
Perceptual	Perceived rural farmland character that is relatively accessible to a large number of people who live or travel through these character areas. High
OVERALL RATING	Medium/ High

9. Platform Farmlands

Landscape Character	Criteria /Thresholds
Scale	Medium scale, broad gently rolling landscape. Medium
Landform	Broad, gently undulating with fairly small variations in height, small incised river valleys. Medium/ High
Pattern	A relatively simple pattern of open grazing and arable fields with simple field boundaries of post and wire fences and some hedgerows. There are a few areas of established woodland. Medium/ High
Development	There is little development within the character area with distributed farmsteads and individual dwellings. There are other developments including overhead pylon development. Medium
Quality	The integrity of this landscape is fairly intact as a unit of elevated agricultural farmland. Medium/ High
Elements and Features	There are fairly simple features within this landscape of open agricultural fields, simple field boundaries and established shelterbelts and one line of overhead electricity pylons in the north western section of this area. The Southern Upland Way long distance path passes through this LCA. Medium/ High
Context	The north eastern outer slopes of the character area will be highly visible from the busy A1 and east coast main line along the coast. Internally within the character area visibility will reduce. The Southern Upland Way passes through this LCA. Medium/ High
OVERALL RATING	Medium/ High

Visual Sensitivity	Criteria
Receptors	There are individual farmsteads and dwellings within this character area and nationally important infrastructure routes just outside the area along the north eastern boundary. The Southern Upland Way passes through this area. High/ Medium
Internal Visibility	There are medium length views within this character area across the broad gently undulating landform, intervening established woodlands and shelterbelts partially screen some views, large areas of the LCA will be visible from the Southern Upland Way and outer eastern slopes visible from coastal and lowland areas. High
External Visibility	The north eastern slopes and high points will be visible from the coastal infrastructure routes. Medium
OVERALL RATING	High/ Medium

Landscape Value	Criteria
Designations	The eastern area of this LCA contains a small area of a SLA. There are two listed buildings and the Southern Upland Way passes through this area. Medium/ Low
Community value	The Southern Upland Way cuts across this character area and there are a number of local core and informal paths as well as cycle routes. Medium/ High
Cultural value	There are few cultural or historical sites within this character area as well as the Southern Upland Way. Medium/ High
Perceptual	Gently rolling broad landscape with views to and from the coast from the John Muir Way and busy east coast mainline (railway) and A1links to England. There will be views to and from the LCA, including from the Southern Upland Way. High/ Medium
OVERALL RATING	High/ Medium

10. Grassland with Rock Outcrops

Landscape Character	Criteria /Thresholds
Scale	Rolling or undulating landscapes, medium to large in scale. Medium/ Low
Landform	Undulating landform with low to medium height differences creating some broad plateau bowl-like landscapes, rural semi upland character above a large regional settlement (Hawick). Medium
Pattern	Simple Landscape pattern of large open undulating grazing fields enclosed by post and wire fences, there are a few established commercial forested areas and shelterbelts. Medium
Development	Sparsely developed with the occasional farmstead and dwelling present there are a few minor single track roads present. Medium
Quality	Intact comprehensive landscape reading as a semi upland farming landscapes elevated above Hawick. Medium
Elements and Features	The most prominent feature of this landscape is the landform itself, the undulations create locally distinctive ridgelines elongated hill tops towards the peripheries in a north east to south west direction. Internally the landform creates upland plateau like landscape with broad enclosed areas. Medium/ Low
Context	The outer slopes facing Hawick are prominent features visible and will provide a rural context to the settlement. High Internal areas are less visible from lower elevations or settlements. Low
OVERALL RATING	Low/ Medium Outer slopes facing Hawick have a High/ Medium sensitivity.

Visual Sensitivity	Criteria
Receptors	Farmsteads and minor roads are within the character areas, outer slopes are fully visible from Hawick and the receptors within the valleys dividing up this group of LCA. Medium
Internal Visibility	Mid range views, partially obscured by undulating topography. Medium/ Low
External Visibility	Views afforded to and from Hawick from the outer slopes, Whitehaugh, Midgard and Chisholme are more visible from Hawick and valleys that divide this group of LCAs. High The larger internal area within the Allan Water is less visible from Hawick. Low
OVERALL RATING	Medium Allan Water has a Medium/ Low sensitivity due to the large internal areas being less visible

Landscape Value	Criteria
Designations	The Midgard LCA contains a small area of a SLA. The Midguard, Whitehaugh and Chisholme LCA contain SSSI's and within the southern most Allan Water LCA there are a number of SAMs. Medium/ Low
Community value	A fairly high number of local core path walks originate from Hawick as well as the long distance Borders Abbeys Way passes through Whitehaugh LCA. High/ Medium
Cultural value	A number of heritage sites near by including historic forts, settlements, Cairns and enclosures. Medium
Perceptual	Outer slopes provide a setting to Hawick, internal areas could be perceived as semi upland farmland areas. Medium
OVERALL RATING	Medium

11. Grassland with Hills

Landscape Character	Criteria /Thresholds
Scale	Large to medium scale landscape. Medium/ Low
Landform	Fairly broad gently sloping areas of grassland with locally prominent hills, accentuated by the steeper slopes. Landscape has an open character. Medium Rubers Law area feels like a large spur jutting into the lowlands areas. High sensitivity Eildon Hills LCA has two conical regionally dominant landmark hills. High
Pattern	Simple landscape pattern of open agricultural grazing fields with post and wire fences, some with sections of broken hedgerows. There are shelterbelts within this character area that create a strong but simple visual pattern. Medium Rubers Law and Eildon Hills have a High sensitivity due to the large regionally dominant landmark hills.
Development	There are individual farmstead developments and the occasional collection of individual dwellings within this character area. Medium/ High Eildon Hills and Skirling LCA have more development internally or alongside and thus have a higher sensitivity. High
Quality	Open, semi rural landscape with regional landmark conical hills in the Eildon and Rubers Law LCA. Medium/ High Skirling LCA contains undulating hills that are not regional landmarks. Medium
Elements and Features	There are prominent high points and elongated ridges, on the lower slopes of the hills there are shelterbelts and established mixed woodlands. Small Burns and Rivers are present and an overhead electricity line with pylons. Medium Ruber's law and Eildon Hills LCA have a High sensitivity as the conical hills are regionally recognisable landmarks.
Context	Each area has elevated sections that are more prominent than the flatter areas affording long distance views to and from these high points within each area. High points outwith the character areas overlook some of the space. Eildon Hills and Rubers Law LCAs are locally and regionally prominent landmarks. The Settlements of Galashiels and Melrose are visible to and from the Eildon hills LCA. Tinto Hill and Broughton Heights are visible and prominent skyline features from the Skirling LCA. High/ Medium
OVERALL RATING	Medium/ High Rubers Law and Eildon Hills LCAs have a High sensitivity

Visual Sensitivity	Criteria
Receptors	Knock Hill LCA has a section of the Southern Upland Way within it increasing the number of receptors in this LCA. All LCAs have Individual farmsteads and groupings of individual dwellings and small settlements within them. The Eildon Hills LCA and Rubers Law contain popular viewpoints and walks that will look over these LCA and the flatter lowlands. The Bonchester Dunion LCA will be visible from Jedburgh and the smaller settlements around this LCA as well as important transport routes. High
Internal Visibility	There are occasional long distance views from areas within the character areas, these are mainly towards high points within or just outwith the areas. Within the majority of areas views are contained by undulating landform. Longer distance views will be afforded over the LCAs and wider agricultural lowland landscapes with larger settlements from the Eildon Hills and Rubers Law LCAs. High
External Visibility	The higher areas will have greater prominence and visibility in this landscape. The Skirling LCA area is visible from the Tinto Hill regionally prominent viewpoint in South Lanarkshire. High
OVERALL RATING	High

Landscape Value	Criteria
Designations	All LCAs contain Listed Buildings, Eildon Hills, Knock Hill and Skirling LCA's contain SSSI's, and SAMs. The Eildon Hills area is part of a larger NSA. All LCAs have small or large areas that are part of larger SLAs. Medium/ High Eildon Hills has a higher sensitivity due to the NSA. High
Community value	Knock Hill contains a section of the Southern Upland Way as well as cycle routes and local footpaths, the Eildons and Rubers Law contain local walks and viewpoints, cycle paths can be found in Rubers Law and Bonchester/ Dunion LCAs. Medium/ High
Cultural value	Historic settlement, cairns, fort sites. Medium
Perceptual	This landscape is more accessible to a local population with locally and regionally prominent hills accessible, visually and physically. From within the character area there are views to and from high points. Medium . Rubers Law and the Eildon Hills have a High sensitivity
OVERALL RATING	Knock Hill, Skirling and Bonchester/ Dunion LCAs have a Medium/ High sensitivity. Eildon Hills and Rubers Law have a High sensitivity

12. Undulating Grassland

Landscape Character	Criteria /Thresholds
Scale	Large to medium scale landscape. Medium
Landform	Undulating hills with steeply sided valleys. Medium
Pattern	Consistent landscape pattern of open rolling grazing fields divided by simple dry stane dykes, rougher grasslands are found on more exposed hill tops. Mixed woodland is associated with river valleys, field boundaries with some larger conifer forestry areas. Medium
Development	There are small settlements, individual farmsteads and a few roads that cross the character areas. Medium/ High
Quality	The landscape has an undulating semi upland rural character, high quality. High/ Medium
Elements and Features	There are local high points of the undulating hills divided into simple fairly regularly shaped fields by dry stane dykes. There are a few larger rivers with established mature trees. Overhead electricity lines and pylons are located within East Gala, to the north of Galashiels. Medium
Context	These areas are above the regionally important and sizable settlement of Galashiels, the outer more prominent slopes of these LCA's will be visible from this settlement will be visible. There are a few small settlements within the character areas. Medium
OVERALL RATING	Medium

Visual Sensitivity	Criteria
Receptors	There are a number of individual farmsteads and dwellings as well as smaller settlements within the character area and a number of roads that will have receptors. The Southern Upland Way passes through this LCA, increasing the number of sensitive receptors. High/ Medium
Internal Visibility	The rolling landscape will reduce internal visibility, reducing views to short/ mid range, there will be views onto this landscape from the Southern Upland Way. High
External Visibility	Views of the outer more prominent slopes from Galashiels and routes along the River Tweed, the internal areas will be less visible from external areas. There will be views onto this LCA from the higher ground to the north, east and west. High
OVERALL RATING	High

Landscape Value	Criteria
Designations	SSSI's, SAMs, the West Gala area contains part of a larger SLA to the south western area. The East Gala LCA contains a small part of the NSA in the south east of the LCA. The prominent outer slopes facing Galashiels are designated as 'Countryside around Towns' to preserve the character and setting of the settlements within the Valley. Medium/ High
Community value	There are a number of local and core paths as well as the Southern Upland Way. Medium/ High
Cultural value	Currently this is an intact area of open grazing farmland with little or no development creating fragmentation or an interruption to the landscape. There are historic fort, settlement and cairn sites within the character areas. High/ Medium
Perceptual	These area could be perceived as a rural semi upland intact farmland landscape with little fragmentation or landuse. High/ Medium
OVERALL RATING	High/ Medium

13. Poor Rough Grassland

Landscape Character	Criteria /Thresholds
Scale	Medium to small scale. Medium/ High
Landform	Gently undulating and gently sloping landform with areas that are more enclosed and intimate in character. Medium/ High
Pattern	Simple landscape of rough grassland and conifer plantation woodland. Low/ Medium
Development	There are a few individual farmstead developments in the western and southern areas. The busy A703 passes through this area. Medium
Quality	Intact area of open rough grassland with conifer plantation areas. Medium
Elements and Features	There are small burns draining the area, these are within gently sloping valleys that are not prominent elements in the landscape. Regular blocks of conifer plantation. Medium
Context	The busy A703 passes through this area, individual farmsteads and the Moorfoot Hills are visible to the southeast. Medium/ High
OVERALL RATING	Medium/ High

Visual Sensitivity	Criteria
Receptors	There are individual farmsteads within the area and a busy A road as well as minor rural roads and tracks within this relatively small area. Medium/ High
Internal Visibility	There are some longer distance internal open views afforded from some more elevated areas of the LCA. Northern area is highly visible to and from Edinburgh and Mid Lothian. High
External Visibility	Long distance views will be afforded from the Moorfoot Hills to the south and east, the Pentlands to the north west and south west and the Southern Uplands to the south. Medium/ High
OVERALL RATING	High/ Medium

Landscape Value	Criteria
Designations	A small southern most area is part of a Scottish Borders Council designated Landscape (not inventory Garden and Designed Landscape). Low
Community value	No footpaths, no immediate public access provisions. Low
Cultural value	No historical sites of cultural interest. Low
Perceptual	The majority of receptors will be drivers of vehicles passing through this open, exposed environment. Medium
OVERALL RATING	Low/ Medium

14. Upland Fringe Moorland

Landscape Character	Criteria /Thresholds
Scale	Isolated relatively small area with a large scale character. Medium
Landform	Upland gently undulating with two locally prominent and distinctive hills. Medium
Pattern	Simple landscape pattern of rough grassland and Heather moorland, especially around the Dirrington Hills, there are a few established mixed specie shelter belts. Medium
Development	There is little development, just a few individual farmsteads. Low
Quality	Barren, exposed, remote upland character with little existing development, landscape intact with few features. Medium/ High
Elements and Features	Contrast of rough grazing land and heather moorland divided by a dry stane wall. Two locally prominent hills overlook this space and a number of small burns drain the area in a radial fashion. One road passes through the space. Local Kaims features, possible glacial in origin. Medium
Context	The Lammermuir Hills are located to the north and north west, from which the LCA maybe visible. The minor rural road to the north east of the area may allow views of the site. Low
OVERALL RATING	Low/ Medium

Visual Sensitivity	Criteria
Receptors	There are few farmstead developments in the character area and one rural upland road that passes over the character area. The Southern Upland Way passes close to North and western areas of LCA. Medium
Internal Visibility	There will be long distance views from the high point of the two Dirrington Hills and medium distance views. Internally over the simple rough grassland/ Heather. Medium/ High
External Visibility	Views from rural road to the north eastern boundary, views maybe afforded from the Lammermuir Hills to the north and north west. there will be views from the Southern Upland Way to the LCA. Medium
OVERALL RATING	Medium/ High

Landscape Value	Criteria
Designations	The southern area of this LCA contains a SSSI, a RAMSAR Site, a SPA and SACs and the northern area of this LCA is part of a larger SLA. The area also contains a number of SAMs. High
Community value	There are no core paths or local paths present, a cycle route skirts the north eastern boundary. Low
Cultural value	Character Area contains The Kaims (possible glacial in origin) and Heriot's Dyke as well as a number of Cairns and standing stones. Medium/ High
Perceptual	This area could be perceived as a barren and upland wilderness. Medium/ High
OVERALL RATING	Medium/ High

15. Lowland with Drumlins

Landscape Character	Criteria /Thresholds
Scale	Large scale landscape. Low/ Medium
Landform	Generally flat to gently sloping with drumlins identified as low elongated hills, generally aligned north east to south west. Medium
Pattern	There is a relatively simple landscape pattern of large arable and some grazing fields divided by hedgerows, some with trees, there are a few shelterbelts also dividing fields. The field pattern is broken by the occasional designed landscape/ policy landscape and small mixed woodland group. Medium
Development	There are numerous individual farmstead developments and small settlements within this character area. There is greater human influence and development within this area. Medium/ High
Quality	This landscape is intact with little fragmentation as an intensive farming landscape. Medium/ High
Elements and Features	There are regular shaped fields with established hedgerows, some with trees and shelterbelts. The drumlins create localised features. Medium/ High
Context	The Character area is overlooked by the Lammermuir Hills to the north and the Southern Uplands or Cheviot Hills to the south and west. There are numerous small and medium sized towns within this landscape that will have localised views within this relatively flat landscape. High/ Medium
OVERALL RATING	Medium/ High

Visual Sensitivity	Criteria
Receptors	There are numerous individual farmstead developments dotted throughout this landscape as well as small and medium sized settlements within and outwith the character area that will be receptors. There are also a number of busy A roads connecting Scotland to England and numerous single track minor roads. High
Internal Visibility	There are long to medium range views within this relatively flat landscape, views are shortened by undulating Drumlins and shelterbelts or established woodland. Medium/ High
External Visibility	There are views from more elevated areas within the Lammermuir Hills and the Southern Uplands/ Cheviot Hills as well as more local views from busy A roads and quieter rural roads The southern areas (north east of Kelso) have a higher intervisibility. Medium/ High
OVERALL RATING	Medium/ High

Landscape Value	Criteria
Designations	The whole area is within prime agricultural land, there are numerous listed buildings spread throughout this area and a Historic Garden and Designed landscape. Medium/ High
Community value	Hirsel country park, picnic areas, core paths, cycle routes and a viewpoint. This area is accessible to a large number of people who live within the area or nearby. High
Cultural value	There are a number of historic sites within this area, including defensive sites. The farmland landscape also has a cultural value itself. Medium
Perceptual	This landscape is accessible to a larger population who live within it, it contains one of the main east coast routes between Scotland and England. The farming landscape can be perceived as an intact whole with a high quality. High/ Medium
OVERALL RATING	High/ Medium

16. Rolling Lowland Margins

Landscape Character	Criteria /Thresholds
Scale	Medium scale landscape with some more intimate areas. Medium/Low
Landform	Gently undulating with flat areas. Medium
Pattern	Large scale arable fields divided by hedgerows, some shelterbelts divide the area further. Landscape is intact as an agricultural landscape. Medium
Development	There are small to medium scale settlements and numerous individual farmsteads or dwellings dotted throughout the landscape. High/ Medium
Quality	The landscape has a managed character associated with intensive arable land uses. Medium/ High
Elements and Features	There are a few medium sized rivers that drain the higher ground of the Scottish Borders. Other elements include hedgerows, large regular shaped fields, shelterbelts and the occasional area of mixed woodland. Medium/ High
Context	The busy A1 and east coast mainline railway passes through the Eye Water Lowland LCA, this is an important connection between England and Scotland and provides a first impression of Scotland to people visiting from England. There will be long distance views from the higher areas within the Lammermuir Hills. Medium/ High
OVERALL RATING	Medium/ High

Visual Sensitivity	Criteria
Receptors	There are numerous individual dwellings and farmsteads throughout the area, busy roads connecting England and Scotland and more regional and local roads. High/ Medium
Internal Visibility	There are long distance views afforded by the gently undulating landscape. High/ Medium
External Visibility	There are views from character areas to the north over the Lowland with Drumlins landscape and longer distance views from the Lammermuir Hills. The Maxwellheugh area has a higher intervisibility. High/ Medium
OVERALL RATING	High/ Medium

Landscape Value	Criteria
Designations	Listed buildings and SAMs can be found within both LCAs. The Maxwellheugh LCA contains a small SSSI. Medium
Community value	Numerous core paths from small or medium sized settlements, core paths. Maxwellheugh LCA provides a setting to Kelso. Medium/ High
Cultural value	Historic fort sites, Culturally this landscape is associated with the more fertile landscapes of the east coast and Borders area. Medium
Perceptual	This landscape is also more accessible to people who live in the towns and other developments within it, the A1 and east coast main line (railway) pass through this area and it can be perceived as an intact unit of agricultural land. Medium
OVERALL RATING	Medium

17. Lowland Margin Platform

Landscape Character	Criteria /Thresholds
Scale	Large scale open agricultural landscape. Medium/ High
Landform	Very gently rolling landscape. High/ Medium
Pattern	An open landscape of large arable and grazing fields divided by dry stane dykes and hedges, some trees and shelterbelts are present as well as larger areas of woodland. Medium/ High
Development	There are individual farmsteads within this landscape and a few smaller settlements, there are two lines of overhead electricity pylons passing through this area. High/ Medium
Quality	This landscape has an intact semi lowland strongly rural and exposed agricultural character. High/ Medium
Elements and Features	There is the occasional medium sized river and burn present. The grid of dry stane dykes is a strong element of this landscape which is strengthened by the linear roads, these strong linear elements are occasionally broken by areas of woodland. Medium/ High
Context	This semi lowland landscape has views over the lowlands to the east. Medium/ High
OVERALL RATING	High/ Medium

Visual Sensitivity	Criteria
Receptors	There are a number of individual farmsteads and medium sized settlements within the character area as well as the receptors that will travel along the rural A roads that pass over the area. High/ Medium
Internal Visibility	There are medium to long distance views afforded by the gently rolling landscape. At places these are partially screened by vegetation. High/ Medium
External Visibility	There are a few small hills that will overlook this area from the north, east, south and west. Medium/ High
OVERALL RATING	High/ Medium

Landscape Value	Criteria
Designations	This area contains prime agricultural land, a SSSI and a few listed buildings. Medium
Community value	Short distance core paths are found around the two largest settlements. There is a sizable community living within this landscape who could view this landscape as an open relatively undeveloped rural agricultural landscape. Medium/ High
Cultural value	The remains of the Greenknowe Tower to the west of Gordon. Low
Perceptual	This open exposed semi upland landscape could be seen as having low recreational value but a higher visual scenic value as you travel through the rural agricultural landscape. Medium
OVERALL RATING	Medium

18. Lowland Margins with Hills

Landscape Character	Criteria /Thresholds
Scale	Medium scale landscape with undulating, sometimes steeply sided and locally prominent hills. Medium/ High
Landform	Open rolling rural agricultural landscape with some more intimate feeling areas resulting from landform. Medium/ High
Pattern	There is a pattern of open rolling farmland divided into fields by hedgerows and the occasional dry stane dyke, the occasional shelterbelt woodland and the occasional larger woodland area. There are a number of policy landscapes with a greater coverage of woodland. Medium/ High
Development	There is sparse development in this area with the occasional farmstead and dwelling as well as a few small settlements. Medium/ High.
Quality	The landscape can be read as an intact managed landscape of agricultural use with policy landscapes. The high regionally prominent peak of Black Hill increases this quality locally. Medium/ High
Elements and Features	The predominant element of this landscape is one of larger fields divided by established hedgerows and dry stane dykes with the occasional shelterbelt woodland and policy landscape. The numerous prominent rounded hills within this landscape dominate the character. Medium/ High
Context	There are views from this character area onto the lowlands to the east and the high points within the Eildon Hills are visible from most areas within this area. High/ Medium
OVERALL RATING	Medium/ High

Visual Sensitivity	Criteria
Receptors	There are farmsteads scattered throughout this landscape and a few small to medium sized settlements within the landscape, there are two policy landscapes within the area and a few medium sized settlements located just outside the character area. The high prominent regional hills of Black Hill and the nearby Eildon Hills will have a view over this landscape. High
Internal Visibility	Internal visibility is reduced by the undulating landscape and hills. There will be a panoramic views over this landscape from Black Hill, a regionally prominent hill and popular walking route. High
External Visibility	There will be views to and from the agricultural lowlands to the east and to and from the Eildon Hills to the west, there will be views of the western areas from the busy transport routes and settlements such as Earlstoun. High
OVERALL RATING	High

Landscape Value	Criteria
Designations	The area contains a Historic Garden and Designed Landscape, SSSI's, SAM's, Conservation Area, Listed Buildings and a small area of Ancient Woodland. The south and south western area is also part of a larger NSA & SLA. High/ Medium.
Community value	The area contains core paths, cycle routes and a viewpoint, Black Hill is a popular walk. Medium
Cultural value	There is a viewpoint overlooking the River Tweed that has associations to Sir Walter Scott, the area also contains a few historic hill forts and policy landscapes. Medium/ High
Perceptual	This area could be perceived as a semi upland environment with a rural agricultural character. Medium/ High
OVERALL RATING	Medium/ High

19. Coastal Farmland

Landscape Character	Criteria /Thresholds
Scale	Medium to large scale landscape. Medium/ Low
Landform	The landform is undulating with steeply incised valleys with woodland. Medium
Pattern	Large arable fields divided by hedgerows, there is the occasional hedgerow tree, the occasional woodland and forested area. Transport infrastructure tends to generally follow the coast within these LCA. Medium
Development	There are a few medium sized settlements as well as individual farmsteads, dwellings and tourism infrastructure developments such as the caravan park at Pease Bay. High/ Medium
Quality	The coastline of the Borders has a rugged windswept character, the coastline can be described as a wildernesses Landscape, a character reflected by the tourism infrastructure along the coast. High
Elements and Features	The rolling agricultural landscape is interrupted by deeply incised river valleys that create strong landscape elements within this landscape. High
Context	This coastal area is a prominent area from the sea and is visible from the higher ground to the south west. High
OVERALL RATING	High/ Medium

Visual Sensitivity	Criteria
Receptors	There are isolated farmsteads and dwellings as well as medium sized settlements, the main east coast railway line travels through the area as does the busy A1, both providing important connections to England. High/ Medium
Internal Visibility	Internal visibility is reduced locally by the undulating and deeply incised river valleys. Medium
External Visibility	The area will be visible from the sea, and the coastal area is highly prominent. Internal areas of this designation are less prominent but will be visible from higher elevations to the south west including the Southern Upland Way. High/ Medium
OVERALL RATING	High/ Medium

Landscape Value	Criteria
Designations	The coastal area is part of a larger SLA and the two areas contain listed buildings. High/ Medium
Community value	The Southern Upland Way begins/ ends within the Cockburnspath LCA and joins onto the Berwickshire Coastal Path, both areas contain core paths and cycle routes. High
Cultural value	The coastal landscape is valued culturally and is visually prominent. High
Perceptual	This coastal landscape can be perceived as a valued tourism landscape. High/ Medium
OVERALL RATING	High/ Medium

20. Coastal Pasture

Landscape Character	Criteria /Thresholds
Scale	Medium scale landscape with enclosed intimate valleys. Medium/ High
Landform	Gently undulating landscape with steeply incised valleys leading to the North Sea. Medium/ High
Pattern	Large arable and grazing fields divided by dry stane dykes, incised river valleys contain mixed woodland. There are planted shelterbelts within this landscape that with the hedgerows provide structure to the landscape. Medium/ High
Development	There are a few coastal harbour towns and smaller settlements inland as well as farmsteads. High/ Medium
Quality	The coastal landscape is highly regarded for it's scenic qualities, reflected in the amount of tourism infrastructure located along the coast and designation as a SLA. High/ Medium
Elements and Features	The dry stane dykes and incised river valleys are prominent features of this landscape. The established shelterbelts and hedgerows provide structure and are the dominant features of the landscape. High/ Medium
Context	The undulating landscape will inhibit most long distance views, however there will be views over the lowlands with Drumlins from the southern part of the area. Medium/ High
OVERALL RATING	High/ Medium

Visual Sensitivity	Criteria
Receptors	There are coastal towns and individual farmsteads and small groupings of dwellings further inland. There is also the busy A1 and east coast mainline that are important connections between England and Scotland. There is a high degree of intervisibility from Transport routes and viewpoints. High/ Medium
Internal Visibility	The undulating landscape reduces views across the landscape. Medium/ High
External Visibility	There are some long distance views to and from the Lowlands to the south west. There will also be long distance and dramatic views along the coast. There will be views from the A1 transport route when approaching from England to the south and when passing through this landscape. High/ Medium
OVERALL RATING	High/ Medium

Landscape Value	Criteria
Designations	The area contains prime agricultural land to the western edge, the coastline is part of a SLA, although not a landscape designation just off the coast is a SAC. The area also contains listed buildings and a number of SAMs (sites of historic hill forts). High
Community value	There are numerous core paths that connect within the Berwickshire Coastal Path and cycle routes. High
Cultural value	There are a few historic fort sites. The coastal landscape could have a high cultural value to the community. Medium/ High
Perceptual	The coastline has an open exposed rural character, the coastal landscapes have more of a wilderness character. Medium/ High
OVERALL RATING	High/ Medium

21. Coastal Moorland

Landscape Character	Criteria /Thresholds
Scale	Broad scale large landscape. Low
Landform	Broadly undulating plateau like landscape. Low/ Medium
Pattern	Large, open grazing fields divided by dry stane dykes. There are areas of scrubby vegetation, dominated by Gorse and areas of woodland planting. Medium
Development	There are individual farmstead developments and individual dwellings present within this area. The central area of this LCA is dominated visually by the Drone Hill windfarm. Medium
Quality	The landscape has an intact agricultural grazing quality with a windswept rugged and often dramatic coastal zone. Medium (High along the coastal zone)
Elements and Features	The main element and feature of this character area is the dramatic coastal area. The Drone Hill windfarm dominates the central area of this LCA, the windfarm follows the strong linear agricultural features of the local landscape. Medium/ High
Context	The slopes to the north west will be prominent when viewed from adjoining areas, the western edge escarpment will be visible from the busy A1 road and from LCAs to the south and west of this LCA. Medium/ High
OVERALL RATING	Medium/ High High along the coast.

Visual Sensitivity	Criteria
Receptors	There are individual farmsteads and dwellings within this area. Receptors will increase along the coast due to the presence of the Berwickshire Coastal Path and St Abbs Headland destination and viewpoint allowing views up and down the coastal zone. Medium/ High
Internal Visibility	Views are reduced by Topography, however along the coastal zone these views become much more open and extensive. Medium/ High High along the coastal zone
External Visibility	There are long distance views to and from this area along the coastal zone and from the outer slopes to the north west. Medium
OVERALL RATING	Medium/ High High along the coastal zone

Landscape Value	Criteria
Designations	A large area of this LCA is part of a larger SLA. Although not a landscape designation a SPA and SAC are located along the coastline. Medium/ High
Community value	The Berwickshire coastal path is located along the coast as is a promoted viewpoint at St Abbs Head promoting a view along this dramatic coastline. There is a cycle route along the A1107. Medium/ High
Cultural value	The coastal area has a greater concentration of cultural heritage features with historic hill forts and settlements along the coastal zone. Medium/ High
Perceptual	This landscape has an open windswept rugged character, especially along the coastal zone. This character is semi wilderness on the plateau area and increases in wildness along the coastal zone. Medium/ High
OVERALL RATING	Medium / High High along the coastal zone

22. Upland Valley with Pastoral Floor

Landscape Character	Criteria /Thresholds
Scale	Narrow to broad valleys with more intimate areas at the narrower areas of the valleys, enclosed by hills of higher elevations before entering more lowland broad valley types (BDR 25). High
Landform	Small to Medium scales, narrow to broad valleys with enclosed intimate sections at higher elevations. High
Pattern	Open undulating grazing fields with the occasional arable field enclosed by dry stane walls with sections of woodlands and trees along the river course. Hedgerows are predominantly alongside roads that can be found within the valleys. High
Development	There are individual dwellings and medium sized settlements within the more sheltered valley settings, roads are located at a slight elevation just above the flat floodplains to reduce the occurrence of flooding. Medium/ High
Quality	The landscape on the valley floor affords scenic vistas up and down the valleys and to the hills that enclose the landscape. The landscape can be read as an attractive intact rural farmland landscape with little to no industrialisation framed by the steep slopes of large Hills. High
Elements and Features	There are more areas of broadleaf woodlands and established broadleaf trees along river courses, roads and field boundaries, the dry stane dykes are a feature of this landscape. High/ Medium
Context	The lower elevations within the valley floor are overlooked by the higher elevations, hills and ridges that enclose the valleys. High/ Medium
OVERALL RATING	High/ Medium

Visual Sensitivity	Criteria
Receptors	There are residential dwellings and farmsteads within the valleys, there are a number of scenic drives and tourist routes along these roads. High
Internal Visibility	There are views up and down the valleys and to the hills and higher elevations that create containment for the valleys. High
External Visibility	There will be views from walks and viewpoints in the higher elevations that will look down onto these valleys. Medium/ High
OVERALL RATING	High/ Medium

Landscape Value	Criteria
Designations	Liddel Water - Listed Buildings, Ancient Woodlands. Upper Ettrick - Listed Buildings, SAMs, Historic gardens and Designed landscape, Historic Battlefields, Ancient Woodland. Upper Yarrow – north western area part of a SLA, Listed Buildings, eastern areas have Ancient Woodland. Manor Water – within a NSA, SLA, contains listed buildings. Upper Tweed / Biggar Water – within SLA, central area contains part of the NSA. Overall: High
Community value	These valleys contain important infrastructure routes through the Borders region, as well as cycle routes, long distance footpaths and core paths. High.
Cultural value	These valleys include a number of historic hill fort sites and settlements. The valleys through the upland elevated hills will be valued by the local community as well as tourists and visitors. High
Perceptual	The valleys will be perceived as part of the more rural hilly/ mountainous areas of the Borders and represent a transitional landscape from the more elevated uplands to the broad settled valleys. High
OVERALL RATING	High

23. Pastoral Upland Valley

Landscape Character	Criteria /Thresholds
Scale	Medium to smaller intimate scale, gently sloping valley topography with steeper more elevated side slopes up to the Moorfoot Plateau and Lauder Common. Medium/ High
Landform	Valley landscapes with gently sloping sides, increasing in gradient as the slope reaches the base of the Moorfoot Plateau landscape. High/ Medium
Pattern	A strong pattern of grazing pasture on the flat valley floors with rough grazing on valley slopes and woodland plantation breaking up the valley embankments. High/ Medium
Development	The valley floors form important infrastructure routes into the Borders area, along these routes there are small settlements and individual farmsteads. High/ Medium
Quality	The landscape can be read as an intact river valley unit connecting the uplands with the lowlands. The valleys are a visually attractive rural landscape quality with broadleaved and conifer woodlands and shelterbelts and grazing farmland. High/ Medium
Elements and Features	The gently sloping valley sides contrasting with the flat bottomed valley is a strong element of this landscape. High/ Medium
Context	These landscapes provide important infrastructure routes through more upland environments. Vehicle and pedestrian routes from higher elevations will provide views down onto the valley floor. Medium/ High
OVERALL RATING	High/ Medium

Visual Sensitivity	Criteria
Receptors	There are numerous individual dwellings dotted along the busy road routes and a few small settlements. High/ Medium
Internal Visibility	There are long distance views afforded along sections of the valley. Medium/ High
External Visibility	External visibility is limited by the upland slopes of the Moorfoot Plateau. However there will be views up and down the valley. Medium
OVERALL RATING	High/ Medium

Landscape Value	Criteria
Designations	Listed buildings can be found in both areas. The southern area of the Gala Water LCA contains a small area of countryside around towns, protecting the northern area and setting of Galashiels. The southern tip of Eddleston Water LCA contains a SLA designation, historic garden and Designed Landscape. Medium/ High
Community value	There are cycle routes within the areas, the local communities will value the landscapes' visual qualities. Medium
Cultural value	Historic sites of Forts and Settlements can be found within these areas. The Valley landscapes cutting through the more rugged upland characters will be valued by the local community. High/ Medium
Perceptual	The broad valley landscapes could be perceived as part of the uplands environment, dominated by the high points of the overlooking hills. High
OVERALL RATING	High/ Medium

24. Upland Valley with Farmland

Landscape Character	Criteria /Thresholds
Scale	Broad gently sloping valley, medium large landscape. High/ Medium
Landform	Gently sloping broad valley landscape, Upper Whiteadder is more enclosed with incised burn valleys and enclosed intimate areas that contrast with the broad open valley landscape of Upper Leader. High Medium
Pattern	There is a strong agricultural pattern of enclosed grazing and arable fields with post and wire fences, hedgerows and a high number of wooded shelterbelt boundaries that create a strong pattern on the valley floor. High/ Medium
Development	There are individual farmsteads and small to medium sized settlements within the area, a number of busy A roads pass through this area. High/ Medium
Quality	The areas have an intact rural agricultural landscape quality within an attractive broad valley landscape with incised burns on valley sides over looked by Heather moorland and coarse grassland. Medium/ High
Elements and Features	The large fields are divided by post and wire fences, hedgerows and woodland shelterbelts, the shelterbelts create a strong visual element to this landscape. The main features also include rivers, burns, roads, tracks and residential developments. High/ Medium
Context	These valleys are visible from the surrounding high ground that will overlook them. Medium
OVERALL RATING	High/ Medium

Visual Sensitivity	Criteria
Receptors	Receptors will include hill walkers as well as residents who live in the settlements and individual dwellings/ farmsteads and people travelling through this landscape in vehicles, the A697 is an important connection between England and Scotland. High/ Medium
Internal Visibility	There are long distance views from elevated areas within the character areas whilst the smaller incised valleys of the burns that feed into the main rivers are of a smaller scale and enclosed. High/ Medium
External Visibility	There will be views from high points from the areas around these Character areas. Medium/ High
OVERALL RATING	High/ Medium

Landscape Value	Criteria
Designations	The Upper Whiteadder character area is part of a larger SLA, the Upper Leader is partly within a SLA along its north eastern boundary. Both areas contain listed buildings and the Upper Leader area also contains a Historic garden and Designed Landscape area. High/ Medium
Community value	Core Paths and sections of long distance paths and cycle routes can be found in these areas. Medium/ High
Cultural value	Historic hill forts and settlement sites can be found in these character areas. Medium.
Perceptual	This area can be perceived as a strongly rural landscape that is visually and physically accessible to the local population as well as a large volume of people travelling through these areas. High/ Medium
OVERALL RATING	Medium/ High

25. Upland Valley with Woodland

Landscape Character	Criteria /Thresholds
Scale	Small to medium sized valley enclosed by outer slopes, broad in places. High/ Medium
Landform	Valley framed by high hills, valley floor broad in places, some areas have steep slopes and spurs punctuating the valley. High/ Medium
Pattern	More complex patterns in the landscape with hedgerows and stone walls enclosing grazing fields with broadleaved shelter belts and broadleaved woodland areas and more complex policy landscapes. Plantation conifer woodlands are also located within this character area. Major A and B roads are located within the valley bottom. High
Development	Roads tend to follow the flatter lands of the valley but above the floodplain, there are numerous individual farmsteads and dwellings as well as small to medium sized settlements and the larger settlement of Peebles located within the more sheltered valleys. High
Quality	This character area has a rural settled upland valley character. High
Elements and Features	This character area contains numerous tourism facilities and attractions including a Botanical Garden (Dawyck) as well as important roads, settlements and rivers with small burns and rivers feeding into them. The Southern Upland Way also follows the glen with numerous viewpoints along it's route, the glen is also a starting point for more local footpaths and recreational routes and the entrance into Glentress mountain biking area and Go-ape. The River Tweed forms an important and strong natural element of this landscape with an international reputation for Salmon fishing. High
Context	Settlements, roads and infrastructure are generally located in the more sheltered location of the Glen. The Glen will be visible from higher elevations looking down onto this landscape. High
OVERALL RATING	High

Visual Sensitivity	Criteria
Receptors	There are numerous individual farmsteads and dwellings as well as important roads, Long and short distance footpaths and transport infrastructure within the Glen. High
Internal Visibility	There are long distant views up and down the Glen and to the high points of the hills and mountains that frame the Glen. High
External Visibility	There will be views from the High points of the hills and mountains that frame the Glen. Medium/ High
OVERALL RATING	High

Landscape Value	Criteria
Designations	There is a high concentration of listed buildings within the Glen, the Middle Tweed and Lower Ettrick/ Yarrow LCAs are part of a larger SLA, the western section of the Middle Tweed LCA is also within a NSA. Throughout the character area there are areas of ancient woodland, Historic gardens and Designed Landscapes and Historic battlefields. High
Community value	There are lots of local as well as a long distance footpath within the Glen and up to the hills and mountains. The river Tweed is an internationally renowned Salmon fishing river and recreational scenic location for the community and tourists. High
Cultural value	There are numerous historic forts, standing stones and settlement sites as well as more recent interventions such as viewpoints, Glentress mountain biking area and Botanical Gardens. High
Perceptual	The Glen has an important regional role. Historically it is an important infrastructure route within the region reflected in the busy roads and larger settlements found here today. The Glen is also important for tourism as a route and destination with open views onto upland hills and mountains. High
OVERALL RATING	High

26. Pastoral Upland Fringe Valley

Landscape Character	Criteria /Thresholds
Scale	Medium scale landscape with more enclosed small scale areas. Medium/ High
Landform	Broad to more enclosed valley landscapes enclosed by gently rounded hills. Medium/ High Bowmont Water LCA. High
Pattern	Large arable and grazing fields are located within the valley floors defined by post and wire fences and mixed shelterbelts. There are areas of broadleaved woodland present within these areas providing a strong contrast to the slopes of the surrounding hills enclosing the valleys. High
Development	There are individual farmsteads and small settlements within the valleys. Medium to larger settlements (Hawick) can be found within the broader areas of the valleys. The River Teviot flows through the Upper Teviot area, busy and minor roads are located within the valleys. High
Quality	These landscapes have an intact settled rural agricultural landscape quality with sections of mixed woodland that contrasts with the more upland character of the hills that enclose the valleys. High/ Medium
Elements and Features	There are established hedgerows, woodlands and agricultural fields within this character area. Roads, settlements and rivers also provide strong elements and features of this landscape. High
Context	These valleys contain busy as well as rural single lane roads and tracks, as the valleys enter wider broader areas there is the occasional medium sized settlement. Medium/ High
OVERALL RATING	High/ Medium Bowmont Water. High

Visual Sensitivity	Criteria
Receptors	Within the valleys there are individual farmsteads and dwellings, busy roads and minor rural roads. Medium sized settlements are located at the transitional areas where these character areas join larger broader character areas. The Eye Water LCA contains the busy A1 and East Coast Mainline railway providing key transportation routes between England and Scotland. High/ Medium
Internal Visibility	There are views up and down the valleys, these are obscured in places by vegetation. High/ Medium
External Visibility	There will be views from the high points on the hills that overlook these character areas. Medium/ High
OVERALL RATING	High/ Medium Bowmont Water has a High visual sensitivity.

Landscape Value	Criteria
Designations	Upper Teviot and Borthwick Water, Listed buildings and designated designed landscapes in the north east area of the LCA. Kale Water and Bowmont Water contain SSSI's and are part of a large SLA. Lower Leader contains a number of SBC designated designed landscapes, listed buildings and the southern tip is part of a NSA. Eye Water, contains listed buildings, prime agricultural land and ancient woodland, the northern tip is part of a larger SLA. Medium/ High
Community value	Core paths and Cycle ways, the Eye Water area contains the start/ end of the Southern Upland Way. Medium/ High
Cultural value	There are a few sites of cultural interest The River Tweed is an important internationally renowned Salmon fishing river. Low/ Medium
Perceptual	These areas could be perceived as intact rural areas that currently provide access into upland plateau/ hill landscapes. Medium/ High
OVERALL RATING	Medium/ High

27. Upland Fringe Valley with Settlements

Landscape Character	Criteria /Thresholds
Scale	Small scale due to development and valley landscape creating small intimate areas. Outwith the more developed areas the scale of the landscape becomes larger (Medium scale) and more open. High/ Medium
Landform	Broad valley with gently sloping to steeper embankments enclosing this landscape. The valley bottom is broad and wide with very gentle undulations at slightly higher elevations. High
Pattern	There is a regionally large and visually continuous settlement development along the valley floor and main A road corridor (Galashiels – Melrose). Arable and grazing fields occupy undeveloped land within the flat valley floor, the busy roads outwith the larger settlements are enclosed by dense woodland planting strips. Within the more sheltered valley bottoms the fields are divided by established hedgerows and shelterbelts, the steeper elevations are characterised by post and wire fences and the occasional shelterbelt or areas of woodland. High
Development	This is a highly developed landscape with a number of large regional settlements along the valley floor following the busy A road corridors, settlements have visual and, in places physical coalescence. Outside the main settlement development there are individual farmstead developments. High
Quality	This landscape has more of a developed character with extensive residential developments, busy A roads, retail areas with industrial and business estates. Outwith the settlements the quality of this landscape is higher and more rural in character with single track roads, hedges, woodlands and individual farmsteads. High/ Medium
Elements and Features	This is one of the more busy character areas with larger settlements with perceived coalescence along the busy A road corridors within the valley floors, arable and grazing fields are located on undeveloped valley floors and higher elevations around settlements, there is the occasional farmstead and smaller settlements. The River Tweed is a dominating feature of this landscape and the disused borders railway has a significant presence that will increase as this line is reopened. This area also contains larger and more established woodland areas. High
Context	Development on the valley slopes have views down into the valley, intervisibility is high through the valley where development allows views. The area is overlooked by the Eildon Hills. High
OVERALL RATING	High

Visual Sensitivity	Criteria
Receptors	There is a high concentration of residential receptors, receptors travelling through this landscape on the busy A roads, receptors working in these settlements and recreational receptors who will be using the long distance footpaths (Southern Upland Way) and the shorter distance core paths and cycle routes within this landscape. High
Internal Visibility	There are long range internal views along the valley where development and vegetation allows. High
External Visibility	There are long range views to and from the Eildon Hills above this character area. There are popular walking routes and viewpoints. High
OVERALL RATING	High

Landscape Value	Criteria
Designations	NSA, SLA as well as listed buildings and Historic Gardens and Designed Landscapes can all be found in this character area. High
Community value	There are a number of long distance and short distance footpaths, core paths, cycle routes, viewpoints and picnic areas within this character area. High/ Medium
Cultural value	This character area contains sites of historic Cairns and Forts and the remains of Melrose Abbey. The River Tweed is an important fishing river of regional and national importance. High
Perceptual	This character area can be perceived as containing gateway settlements into upland areas of the Borders area at the transitional area between upland and lowland areas. High
OVERALL RATING	High

28. Woodland Upland Fringe Valley

Landscape Character	Criteria /Thresholds
Scale	Semi broad valley landscapes enclosed by steeper slopes medium to large landscape with more intimate areas. Medium/ Low
Landform	Relatively flat to gently sloping/ undulating valley bottoms with slightly steeper sides rising to steeper more elevated slopes. Medium/ High
Pattern	A slightly more visually complex matrix of pasture and arable fields with established hedgerows, shelterbelts and mixed or broadleaved woodlands. High/ Medium
Development	There are a number of large to medium sized settlements as well as individual farmstead developments, busy A roads and minor single track roads. Medium/ High
Quality	Rural attractive valley landscapes with intact areas of woodland. These areas would be valued for their enclosed quality. High
Elements and Features	The landscapes have an undulating or gently sloping character to the central rivers within each area. Large open fields have established hedgerows, mixed and broadleaved shelterbelts and areas of broadleaved or mixed woodlands. The valley landscapes create natural routes for roads and communication routes through the landscape. There are areas of mixed woodland however these areas are dominated by large arable and grazing fields divided by hedgerows with mature trees. High/ Medium
Context	The topography of the valley landscapes affords medium distance views along the river corridors, in places these are screened by woodlands, shelterbelts and hedgerows. The higher hills surrounding each valley will have views looking down into them. Medium/ High
OVERALL RATING	High/ Medium

Visual Sensitivity	Criteria
Receptors	There are medium to small settlements within each character area and road corridors that range from busy A roads leading to England to minor single track rural roads and tracks. High
Internal Visibility	Views are afforded up and down valley landscapes, these are reduced by trees, hedgerows and woodlands within the valleys. At places landform will further reduce views. Medium/ High
External Visibility	The higher land around each valley will have views down onto the valley floor. Medium
OVERALL RATING	High/ Medium

Landscape Value	Criteria
Designations	Rule Water and Jed Water character areas are part of a larger SLA, the Middle Whiteadder near the North Sea Coast is also part of a larger SLA. Each area contains listed buildings and SBC designated landscapes. High/ Medium
Community value	Cycle routes, long distance paths and core paths are all located within these areas. Medium/ High
Cultural value	The historic town of Jedburgh within the Jed Water area contains a number of historical cultural sites as well as sites of historic forts and settlements and remains of historic Towers. High/ Medium
Perceptual	These areas provide a visually rich linear landscape, intact as rural and agricultural with woodlands and meandering rivers with an upland character. Medium/ High
OVERALL RATING	High/ Medium

29. Lowland Valley with Farmland

Landscape Character	Criteria /Thresholds
Scale	Medium to small scale undulating lowland landscapes. High
Landform	Gently undulating and rolling open agricultural fields enclosed and defined by hedgerows, shelterbelts and medium sized areas of woodland. The Rivers Teviot and Tweed create an overall gentle valley landscape. High
Pattern	The dominant pattern in the landscape is one of large arable and grazing fields enclosed by established hedgerows and shelterbelts. There are areas of established woodlands and policy landscapes. High
Development	There are medium to small sized settlements within these adjoining character areas as well as individual farmsteads and policy landscapes with large country homes. Other developments in this landscape include busy A roads connecting the main larger settlements outwith this character area to small minor single track roads. High/ Medium
Quality	This landscape has an intact extensively rural agricultural landscape quality. High
Elements and Features	The large agricultural field systems with established hedgerows, shelterbelts, small woodlands and rivers form the main elements within this landscape. High
Context	These lowland landscapes are overlooked by a number of locally and regionally prominent hills, Rubers Law, the Minto Hills and the Eildon Hills will all overlook this landscape type. The settlements of Hawick, Melrose and Jedburgh are just outside the character areas and will be affected by development within these areas. High
OVERALL RATING	High

Visual Sensitivity	Criteria
Receptors	These adjoining areas contain long distance footpaths (Dere Street), core paths and cycleways, small to medium sized settlements as well as roads that range from busy A roads connecting key larger settlements to single track rural roads and tracks. High
Internal Visibility	The undulating landscape provides short to medium range views at points across valley landscapes and lower areas of undulations. Linear vistas are created along the flatter areas of the river valleys with an attractive scenic quality. High
External Visibility	The high points that surround the area will have a overview of this landscape type. These include Rubers Law, Minto Hills and The Eildon Hills. The larger settlements of Hawick, Jedburgh and Melrose will have localised views onto these areas. High
OVERALL RATING	High

Landscape Value	Criteria
Designations	The combined areas include Listed buildings, SLAs, Historic battlefields, NSA, Historic Gardens and Designed Landscapes the river Tweed including it's tributaries are SSSIs and SAC sites. The area around Melrose/ Newton St Boswell is designated as Countryside Around Towns to protect the rural character of these settlements and prevent coalescence. High
Community value	This landscape is accessible to a larger local population who live nearby and within it, the rivers are important fishing areas of national/ international recognition. High
Cultural value	There are policy landscapes within this character area, sites of historic forts, settlements, standing stones and historic Dryburgh Abbey. High
Perceptual	The landscape can be perceived as an open undulating or rolling agricultural landscape that separates more sizable settlements. High/ Medium
OVERALL RATING	High

30. Coastal Valley

Landscape Character	Criteria /Thresholds
Scale	Small scale intimate areas enclosed by steep sided incised wooded valleys, upper slopes are gently sloping and more open in character Medium/ High
Landform	Incised wooded valleys with gently sloping upper slopes. High
Pattern	The valleys are dominated by broadleaved woodland, the upper slopes are large arable/ grazing fields. High
Development	There are individual farmsteads and dwellings along the upper slopes of the valleys, as the Eye Water enters the North Sea there is the larger settlement of Eyewater. High
Quality	This area has a high quality condensed character and acts as a transitional area between the agricultural Lowlands to the west and the North Sea to the east. High
Elements and Features	The wooded valleys form a dominant element of this landscape, these are in contrast to the open agricultural fields. High
Context	The settlement of Eyemouth and the smaller settlements within the character area will have a view of development within the character area. High
OVERALL RATING	High

Visual Sensitivity	Criteria
Receptors	The main receptors will be within the settlements of Eyemouth and the smaller groupings of dwellings as well as the individual farmsteads and dwellings throughout the character area. The character areas also includes a number of busy A roads and minor roads. High
Internal Visibility	There will be views from Eyemouth into the LCA. High
External Visibility	This enclosed valley is fairly self contained but opens as the valley joins the coastal zone with a greater degree of intervisibility and views along the dramatic coast. High
OVERALL RATING	High

Landscape Value	Criteria
Designations	The area contains a number of listed buildings, the coastal area is part of a larger SLA. High
Community value	There are a number of Cycle routes and core paths within the character area, the long distance Berwickshire Coastal Path is along the coast. High
Cultural value	Ayton Castle is within this character LCA. Medium/ High
Perceptual	This character area could be perceived as an attractive transitional landscape between the coastal zone and more inland areas with extensive woodland cover within the valleys. High
OVERALL RATING	High