

Main Index of Policy Maps (P0)

Scale 1:350,000

Key

Policy Map Boundary

Housing Market Area

Policy Boundaries

Gardens and Designed Landscapes (BE3)

Special Protection Areas (NE1)

Special Areas of Conservation (NE1)

River Tweed, Special Area of Conservation (NE1)

Site of Special Scientific Interest* (NE2)

Coastline (EP4)

National Scenic Areas (EP1)

Areas of Great Landscape Value (EP2)

Transport Safeguarding ** (Inf1)

Civil Aviation Authority Safeguarding (Inf9)

Hazard Pipeline Buffers (Inf9)

Area of Dispersed Communities (D2)

Coal Mining Report Areas (R2)

*Parts of the River Tweed and its main tributaries are also designated as Sites of Special Scientific Interest.

** Indicative route of railway only.

© SNH. © HSE. © CA. © CAA.
© Historic Scotland. © SBC.

For further information, including help reading this document, please contact:

Plans and Research Team
Environment &
Infrastructure
Council Headquarters
Newtown St Boswells
Melrose TD6 0SA



Tel: 01835 826511
Email: localplan@scotborders.gov.uk

Disclaimer: Scottish Borders Council uses spatial information from a range of sources to produce the mapping contained within this document. The mapping is for illustrative purposes only. The original sources should be consulted to confirm information. This map is based upon Ordnance Survey material with the permission of Ordnance Survey on behalf of the Controller of Her Majesty's Stationery Office

© Crown copyright and database right 2011.
All rights reserved. Ordnance Survey Licence number 100023423. v3.0



Scottish Borders Council
Consolidated Local Plan 2011
Policy Map 1 (P1)

Scale 1:200,000

Key

Policy Map Boundary

Housing Market Area

Policy Boundaries

Gardens and Designed Landscapes (BE3)

Special Protection Areas (NE1)

Special Areas of Conservation (NE1)

River Tweed, Special Area of Conservation (NE1)

Site of Special Scientific Interest* (NE2)

National Scenic Areas (EP1)

Areas of Great Landscape Value (EP2)

Transport Safeguarding ** (Inf1)

Civil Aviation Authority Safeguarding (Inf9)

Hazard Pipeline Buffers (Inf9)

Area of Dispersed Communities (D2)

Coal Mining Report Areas (R2)

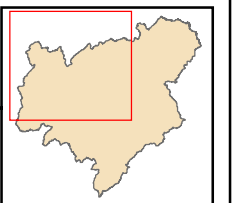
*Parts of the River Tweed and its main tributaries are also designated as Sites of Special Scientific Interest.

** Indicative route of railway only.

© SNH. © HSE. © CA. © CAA.
© Historic Scotland. © SBC.

For further information, including help reading this document, please contact:

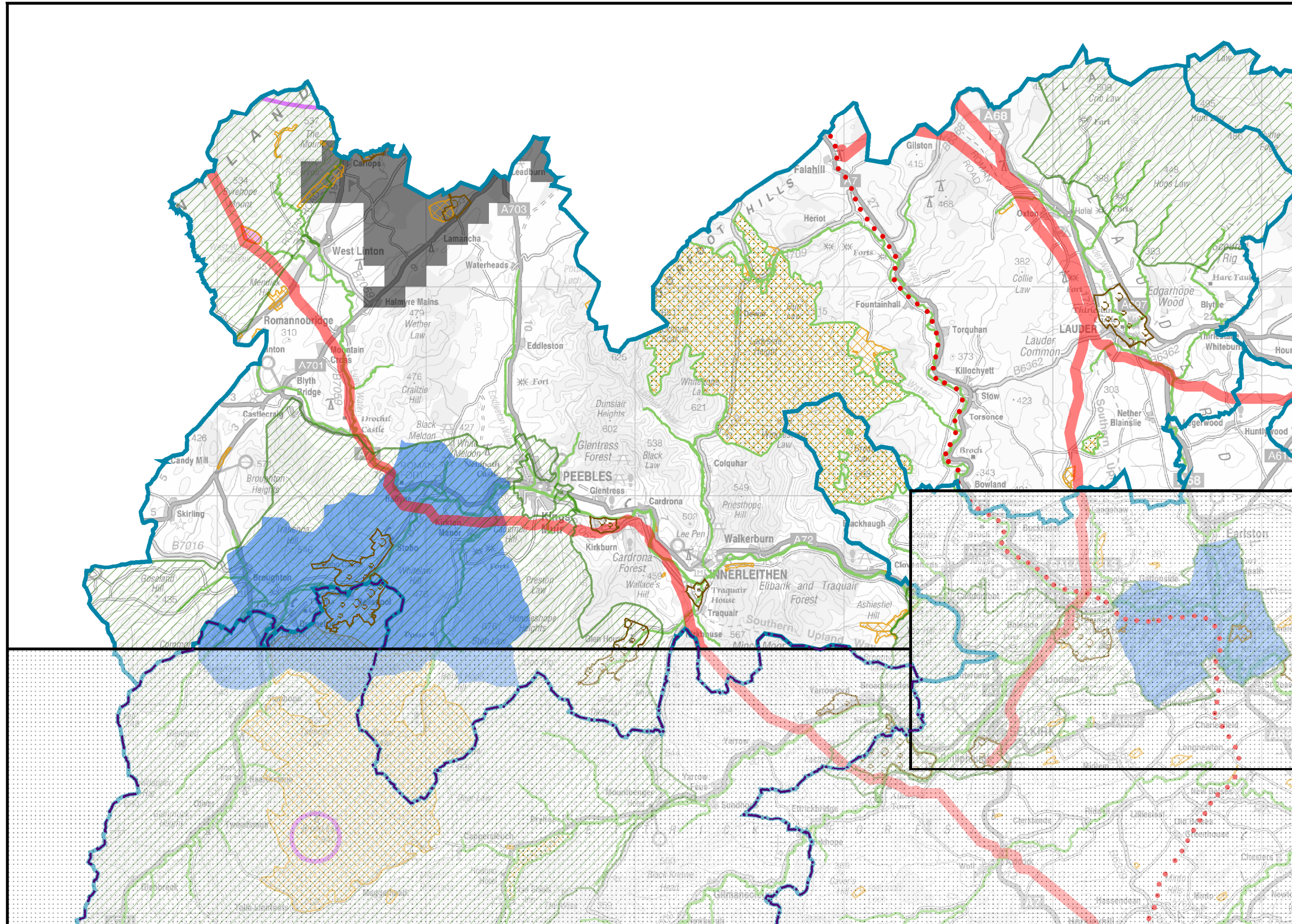
Plans and Research Team
Environment &
Infrastructure
Council Headquarters
Newtown St Boswells
Melrose TD6 0SA

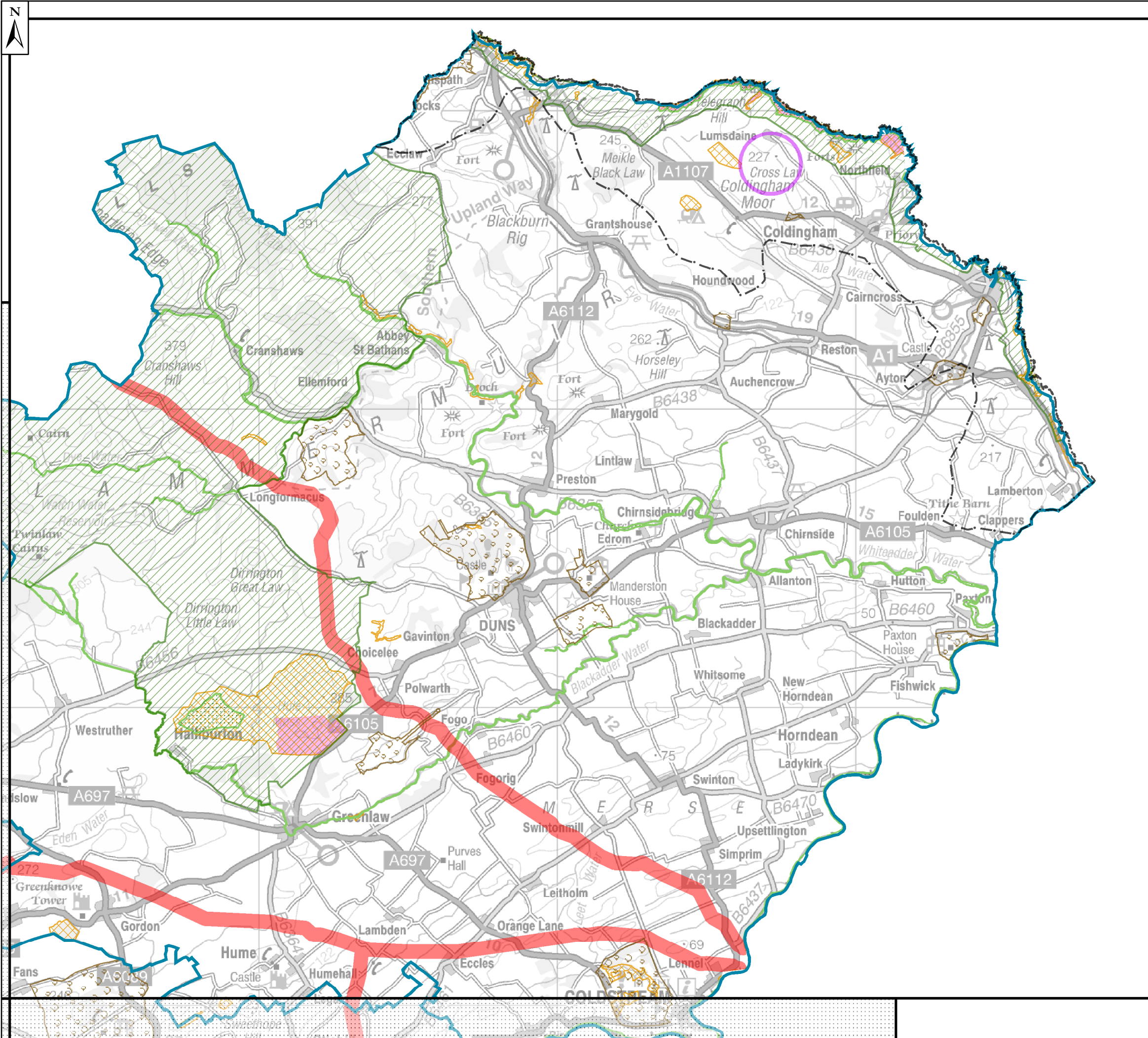


Tel: 01835 826511
Email: localplan@scotborders.gov.uk

Disclaimer: Scottish Borders Council uses spatial information from a range of sources to produce the mapping contained within this document. The mapping is for illustrative purposes only. The original sources should be consulted to confirm information. This map is based upon Ordnance Survey material with the permission of Ordnance Survey on behalf of the Controller of Her Majesty's Stationery Office

© Crown copyright and database right 2011.
All rights reserved. Ordnance Survey Licence number 100023423. v3.0
















Scottish Borders Council
Consolidated Local Plan 2011
Policy Map 2 (P2)

Scale 1:125,000

Key

-  Policy Map Boundary
-  Housing Market Area
- Policy Boundaries**
-  Gardens and Designed Landscapes (BE3)
-  Special Protection Areas (NE1)
-  Special Areas of Conservation (NE1)
-  River Tweed, Special Area of Conservation (NE1)
-  Site of Special Scientific Interest* (NE2)
-  Coastline (EP4)
-  Areas of Great Landscape Value (EP2)
-  Civil Aviation Authority Safeguarding (Inf9)
-  Hazard Pipeline Buffers (Inf9)

*Parts of the River Tweed and its main tributaries are also designated as Sites of Special Scientific Interest.

** Indicative route of railway only.

© SNH. © HSE. © CAA.
© Historic Scotland. © SBC.

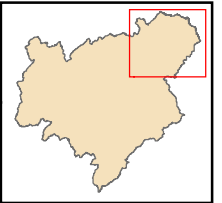
For further information, including help reading this document, please contact:

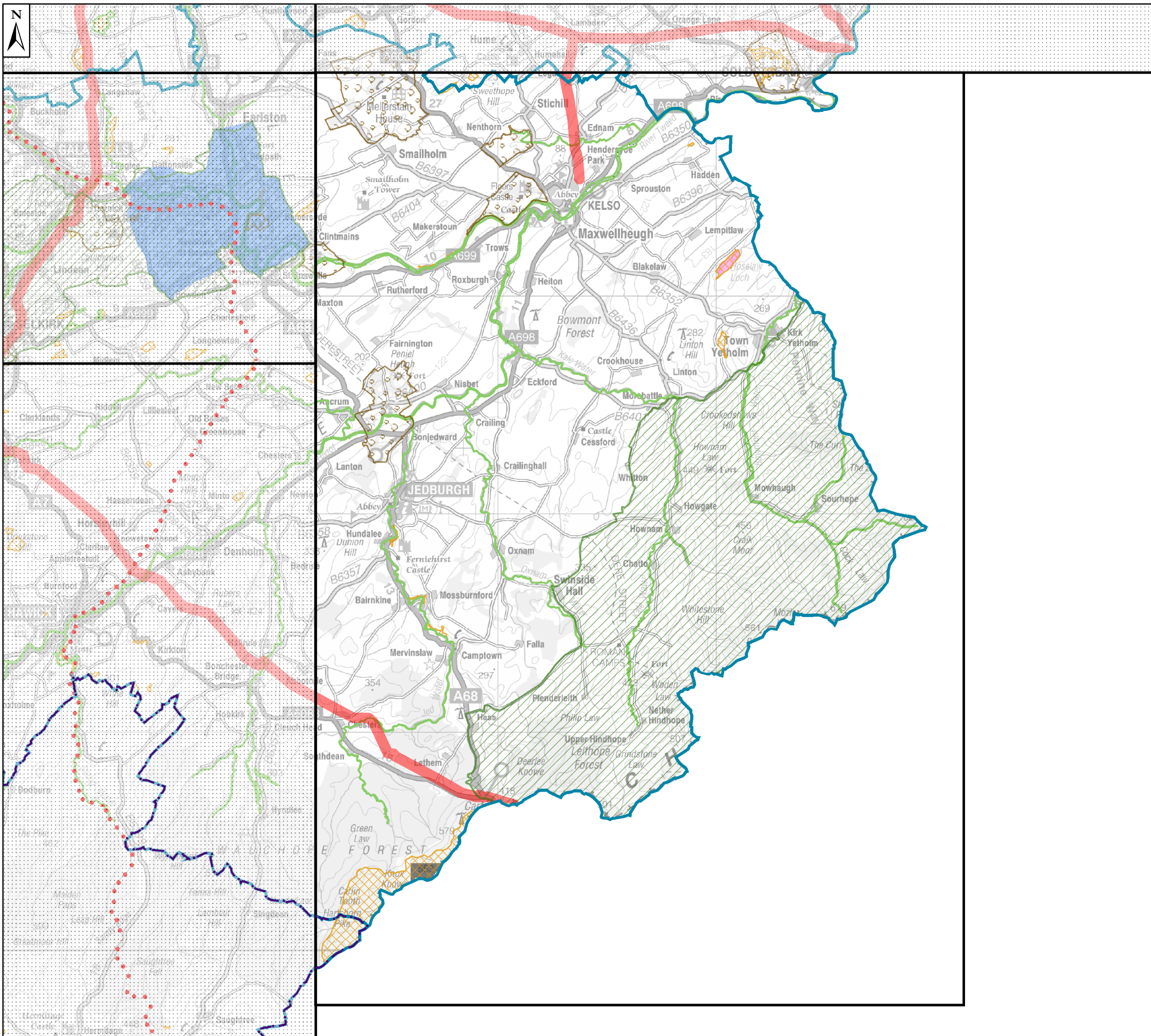
Plans and Research Team
Environment &
Infrastructure
Council Headquarters
Newtown St Boswells
Melrose TD6 0SA

Tel: 01835 826511
Email: localplan@scotborders.gov.uk

Disclaimer: Scottish Borders Council uses spatial information from a range of sources to produce the mapping contained within this document. The mapping is for illustrative purposes only. The original sources should be consulted to confirm information. This map is based upon Ordnance Survey material with the permission of Ordnance Survey on behalf of the Controller of Her Majesty's Stationery Office

© Crown copyright and database right 2011.
All rights reserved. Ordnance Survey Licence number 100023423. v3.0





Scottish Borders Council
Consolidated Local Plan 2011
Policy Map 3 (P3)

Scale 1:170,000

Key

Policy Map Boundary

Housing Market Area

Policy Boundaries

Gardens and Designed Landscapes (BE3)

Special Protection Areas (NE1)

Special Areas of Conservation (NE1)

River Tweed, Special Area of Conservation (NE1)

Site of Special Scientific Interest* (NE2)

National Scenic Areas (EP1)

Areas of Great Landscape Value (EP2)

Transport Safeguarding ** (Inf1)

Hazard Pipeline Buffers (Inf9)

Area of Dispersed Communities (D2)

Coal Mining Report Areas (R2)

*Parts of the River Tweed and its main tributaries are also designated as Sites of Special Scientific Interest.

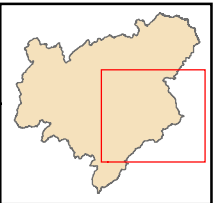
** Indicative route of railway only.

© SNH. © HSE. © CA.

© Historic Scotland. © SBC.

For further information, including help reading this document, please contact:

Plans and Research Team
Environment &
Infrastructure
Council Headquarters
Newtown St Boswells
Melrose TD6 0SA



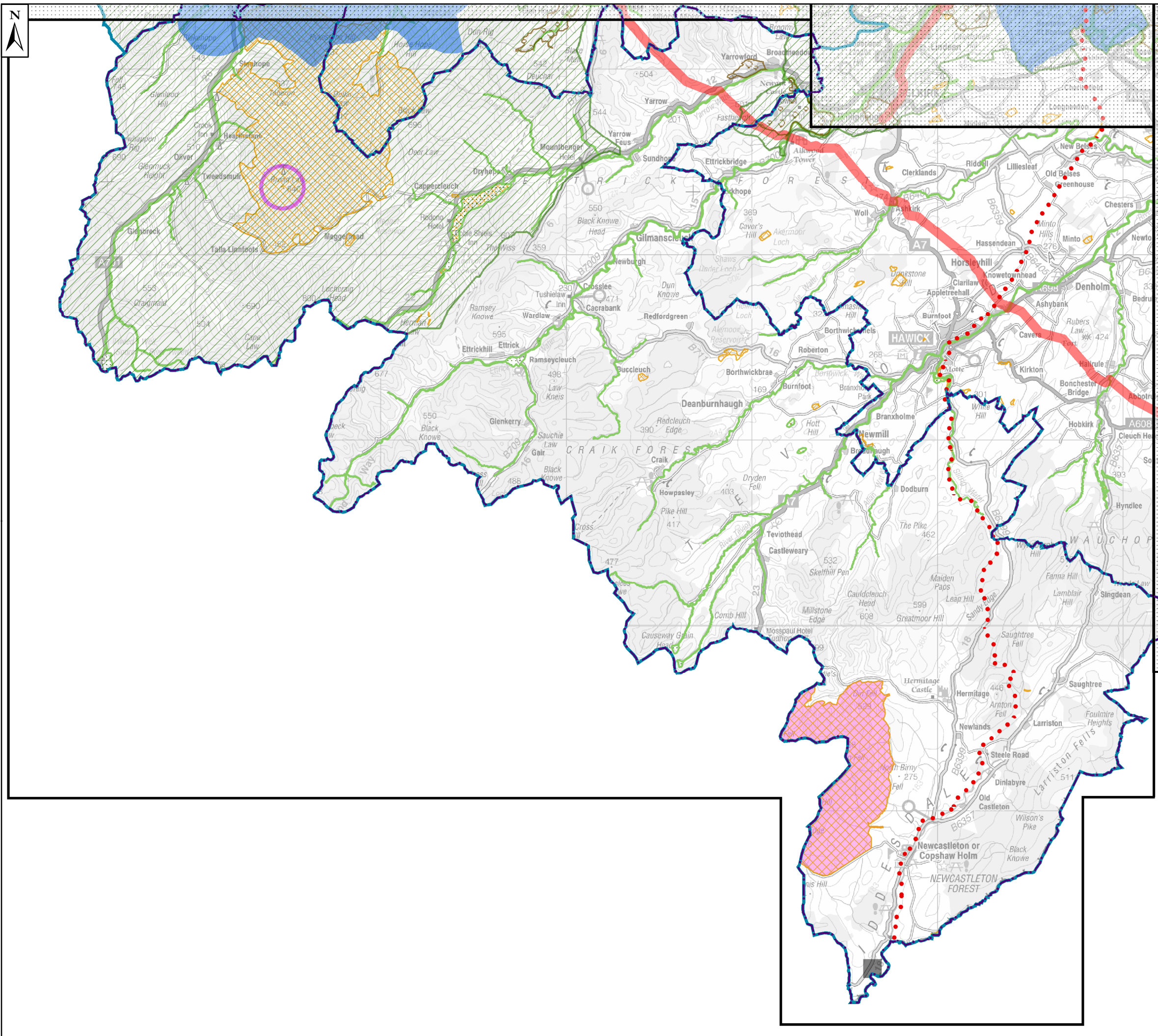
Tel: 01835 826511

Email: localplan@scotborders.gov.uk

Disclaimer: Scottish Borders Council uses spatial information from a range of sources to produce the mapping contained within this document. The mapping is for illustrative purposes only. The original sources should be consulted to confirm information. This map is based upon Ordnance Survey material with the permission of Ordnance Survey on behalf of the Controller of Her Majesty's Stationery Office

© Crown copyright and database right 2011.

All rights reserved. Ordnance Survey Licence number 100023423. v3.0



Scottish Borders Council
Consolidated Local Plan 2011
Policy Map 4 (P4)
Scale 1:200,000

- Key**
-  Policy Map Boundary
 -  Housing Market Area
- Policy Boundaries**
-  Gardens and Designed Landscapes (BE3)
 -  Special Protection Areas (NE1)
 -  Special Areas of Conservation (NE1)
 -  River Tweed, Special Area of Conservation (NE1)
 -  Site of Special Scientific Interest* (NE2)
 -  National Scenic Areas (EP1)
 -  Areas of Great Landscape Value (EP2)
 -  Transport Safeguarding ** (Inf1)
 -  Civil Aviation Authority Safeguarding (Inf9)
 -  Hazard Pipeline Buffers (Inf9)
 -  Area of Dispersed Communities (D2)
 -  Coal Mining Report Areas (R2)

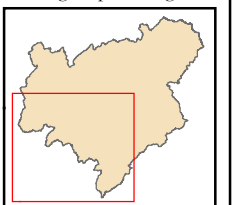
*Parts of the River Tweed and its main tributaries are also designated as Sites of Special Scientific Interest.

** Indicative route of railway only.

© SNH. © HSE. © CA. © CAA.
© Historic Scotland. © SBC.

For further information, including help reading this document, please contact:

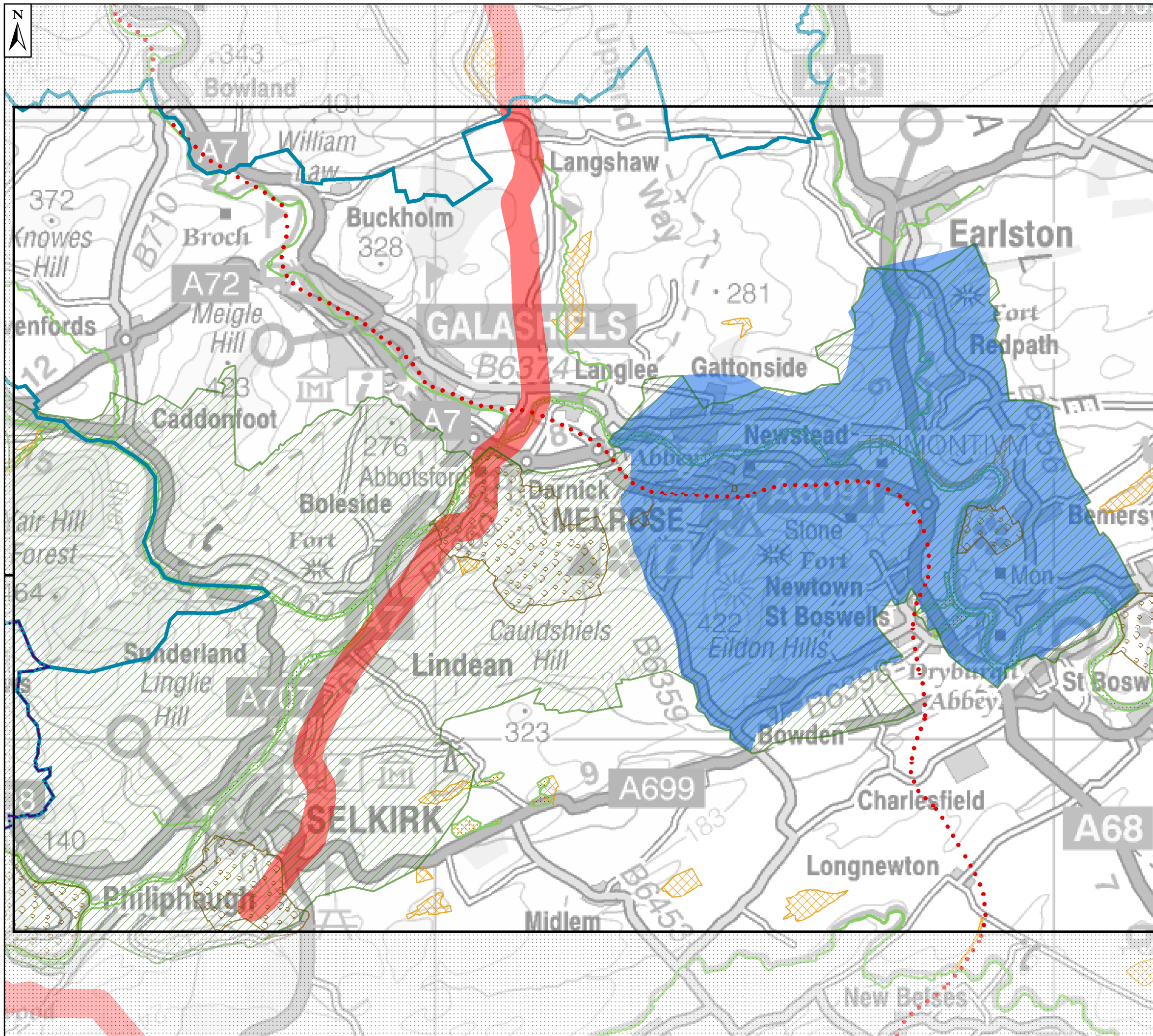
Plans and Research Team
Environment &
Infrastructure
Council Headquarters
Newtown St Boswells
Melrose TD6 0SA



Tel: 01835 826511
Email: localplan@scotborders.gov.uk

Disclaimer: Scottish Borders Council uses spatial information from a range of sources to produce the mapping contained within this document. The mapping is for illustrative purposes only. The original sources should be consulted to confirm information. This map is based upon Ordnance Survey material with the permission of Ordnance Survey on behalf of the Controller of Her Majesty's Stationery Office

© Crown copyright and database right 2011.
All rights reserved. Ordnance Survey Licence number 100023423. v3.0



Scottish Borders Council
Consolidated Local Plan 2011
Policy Map 5 (P5)

Scale 1:60,000

Key

Policy Map Boundary

Housing Market Area

Policy Boundaries

Gardens and Designed Landscapes (BE3)

Special Areas of Conservation (NE1)

River Tweed, Special Area of Conservation (NE1)

Site of Special Scientific Interest* (NE2)

National Scenic Areas (EP1)

Areas of Great Landscape Value (EP2)

Transport Safeguarding ** (Inf1)

Hazard Pipeline Buffers (Inf9)

*Parts of the River Tweed and its main tributaries are also designated as Sites of Special Scientific Interest.

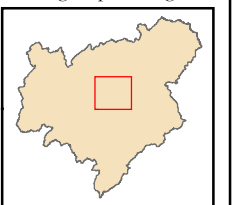
** Indicative route of railway only.

© SNH. © HSE. © CAA.
© Historic Scotland. © SBC.

For further information, including help reading this document, please contact:

Plans and Research Team
Environment &
Infrastructure
Council Headquarters
Newtown St Boswells
Melrose TD6 0SA

Tel: 01835 826511
Email: localplan@scotborders.gov.uk



Disclaimer: Scottish Borders Council uses spatial information from a range of sources to produce the mapping contained within this document. The mapping is for illustrative purposes only. The original sources should be consulted to confirm information. This map is based upon Ordnance Survey material with the permission of Ordnance Survey on behalf of the Controller of Her Majesty's Stationery Office

© Crown copyright and database right 2011.
All rights reserved. Ordnance Survey Licence number 100023423. v3.0