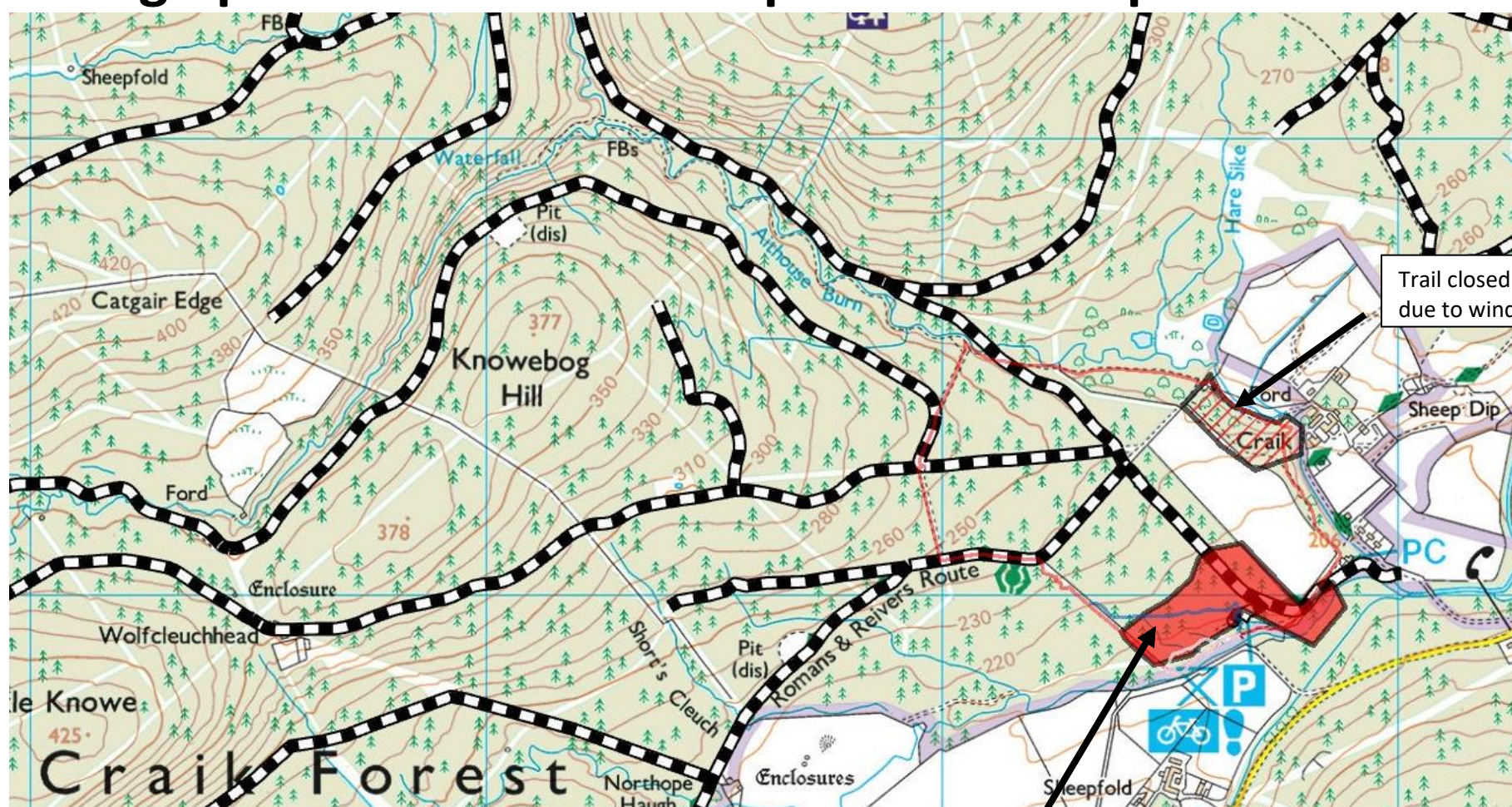




Sorry carparks and walking trails are closed due to tree felling operations. More info please see map.



Tree felling operations, see area marked in red.

Waymarked walking trails and both carparks in this area are closed seven days a week, during these operations.

Walking along forest road/ Romans and Reivers Route:
For forest road access wait for the operator to see you and clearly signal for you to pass, Mondays-Fridays.

We hope to reopen by the end of January 2026.