

Scottish Borders Child Poverty Index 2024

May 2025
E.R. Murray for Scottish Borders Council (experimental statistics)

Table of Contents

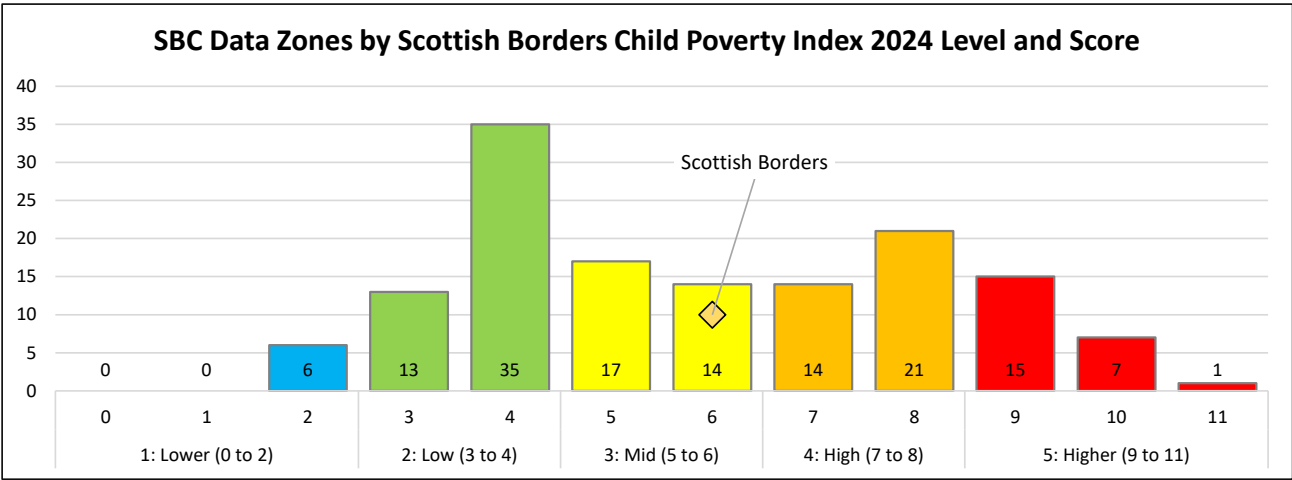
Scottish Borders Child Poverty Index 2024 Summary.....	2
SB CPI: Purpose and Scoring.....	3
Scottish Borders Child Poverty Index 2024 Components	4
Scottish Borders Child Poverty Index 2024 Results.....	6
Scottish Borders Child Poverty Level Change Over Time 2017 to 2024.....	7
Comparing Scottish Borders Child Poverty Index 2024 to SIMD 2020.....	9
Appendix 1: Level of Child Poverty 2017 – 2024, SBC, Ward and Data Zone	11
Scottish Borders and Wards	11
Berwickshire	11
Cheviot	12
Eildon.....	13
Teviot and Liddesdale.....	14
Tweeddale	15

Scottish Borders Child Poverty Index 2024 Summary

The report marks the eighth year of the Scottish Borders Child Poverty Index (SB CPI), it provides an overview into Child Poverty in the Scottish Borders. The SB CPI is created from two components: Children in Low Income Families and Pupils registered for Clothing Grant.

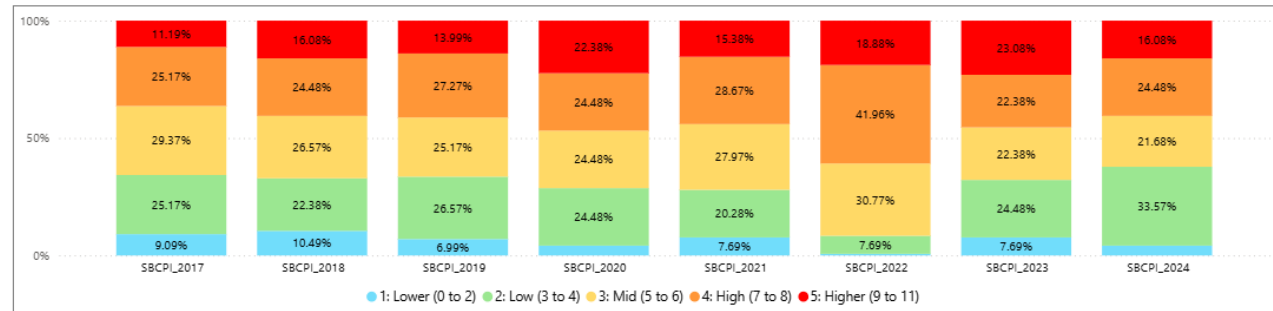
The Scottish Borders Child Poverty Index can be explored in more detail on the Scottish Borders Council’s [Child Poverty Information](#) webpage.

The graph below shows the distribution of data zones in the Scottish Borders by their SB CPI 2024 score. In 2024 the Scottish Borders had a score of 6 which is part of the ‘Mid’ level of child poverty.



The graph below shows the proportion of data zones by each level of child poverty from 2017 to 2024. The impact of Covid19 and the cost-of-living crisis can be seen in the number/proportion of data zones with Mid/High/Higher levels of child poverty. 66% of data zones had Mid/High/Higher levels of child poverty in 2017 that increased to 71% in 2020 and then to 92% for 2022. In 2023 the proportion of data zones with Mid/High/Higher levels of child poverty return to pre-covid level with 68%. Then for 2024 the proportion of data zones with Mid/High/Higher levels of child poverty reduced further to 62%, with a marked increase in the data zones in the low group.

Proportion of Data Zones in the Scottish Borders by Level of Child Poverty (2017 to 2024)



SB CPI: Purpose and Scoring

The purpose of the **Scottish Borders Child Poverty Index (SB CPI)**¹ is to provide additional insight into Child Poverty in the Scottish Borders. It is an *experimental* tool that may be used as a proxy for understanding the level of child poverty within the Scottish Borders.

The SB CPI was also created to work alongside the Scottish Index of Multiple Deprivation. SIMD provides a way of looking at deprivation in an area, covering the whole population and does not specifically reflect child poverty.

The SB CPI is a tool to help inform the Local Child Poverty Action Plan and which is a requirement of the Child Poverty Act (Scotland) 2017. The SB CPI is a summary of two components, which are:

- Children in Low Income Families (**CiLIF**) – Source is [DWP/HMRC](#).² Relative low-income is defined as a family whose equivalised income is below 60 per cent of contemporary median income. Gross income measure is Before Housing Costs (BHC) and includes contributions from earnings, state support and pensions. The SB CPI uses the most recent available year's data, currently there is a one-year lag e.g. for SB CPI 2024 uses the CiLIF data for 2023-24.
- Clothing Grant (**CLG**) - Source is SBC. The proportion of pupils recorded for Clothing Grant of all pupils in area for school year.

The table below shows the results for the Components for the Scottish Borders Child Poverty Index for 2017 to 2024

Child Poverty Index Component / Year	SB CPI 2017	SB CPI 2018	SB CPI 2019	SB CPI 2020	SB CPI 2021	SB CPI 2022	SB CPI 2023	SB CPI 2024
Children in Low Income Families - CiLIF (DWP)*	19.0%	20.7%	20.5%	22.0%	18.0%	23.8%	23.8%	19.3%
Clothing Grant - CLG (SBC)	14.6%	15.1%	15.2%	18.1%	18.0%	18.8%	16.7%	16.1%

The tables below show the score that an area will receive based on the result for each component. The SB CPI allows an area to have a score ranging from 0 to 11, where 0 indicates no element of child poverty and 11 the highest levels of child poverty.

Children in Low Income Families (DWP)	Clothing Grant (SBC)	SB Child Poverty Index (revised)	
0: None	0: None	Points	Level
1: Under 10%	1: Under 5%	0 to 2	1: Lower
2: 10% to Under 20%	2: 5% to Under 10%	3 to 4	2: Low
3: 20% to Under 30%	3: 10% to Under 15%	5 to 6	3: Mid
4: 30% to Under 40%	4: 15% to Under 20%	7 to 8	4: High
5: 40% or More	5: 20 to Under 30%	9 to 11	5: Higher
	6: 30% or More		

¹ Revised November 2023

² *The calculation of proportion of Children in Low Income Families for the purpose of the Scottish Borders Child Poverty Index differs to 'official statistics' due to the availability of the data from Stat-Xplore. The children in Stat-Xplore are defined as dependent individuals aged under 16; or aged 16 to 19 in full-time non-advanced education or in unwaged government training. (Not just those aged under 16 – unable to group into age bands). The figure for all children is then expressed as proportion of those aged 0 to 15 as published by NRS. It is recognised that this calculation is imperfect, but practical for the purpose of the SB CPI.

Scottish Borders Child Poverty Index 2024 Components

The table below shows the allocation of data zones in the Scottish Borders for each of the components by count and proportion within each grouping.

Component Points	Children in Low Income Families		Clothing Grant	
	Count	Percent	Count	Percent
0: None	0	0%	3	2%
1: Lower	5	3%	21	15%
2: Low	73	51%	34	24%
3: Mid	43	30%	16	13%
4: High	19	13%	21	15%
5: Higher	3	2%	29	20%
6: Higher +			16	11%
SBC Data Zones	143	100%	143	100%

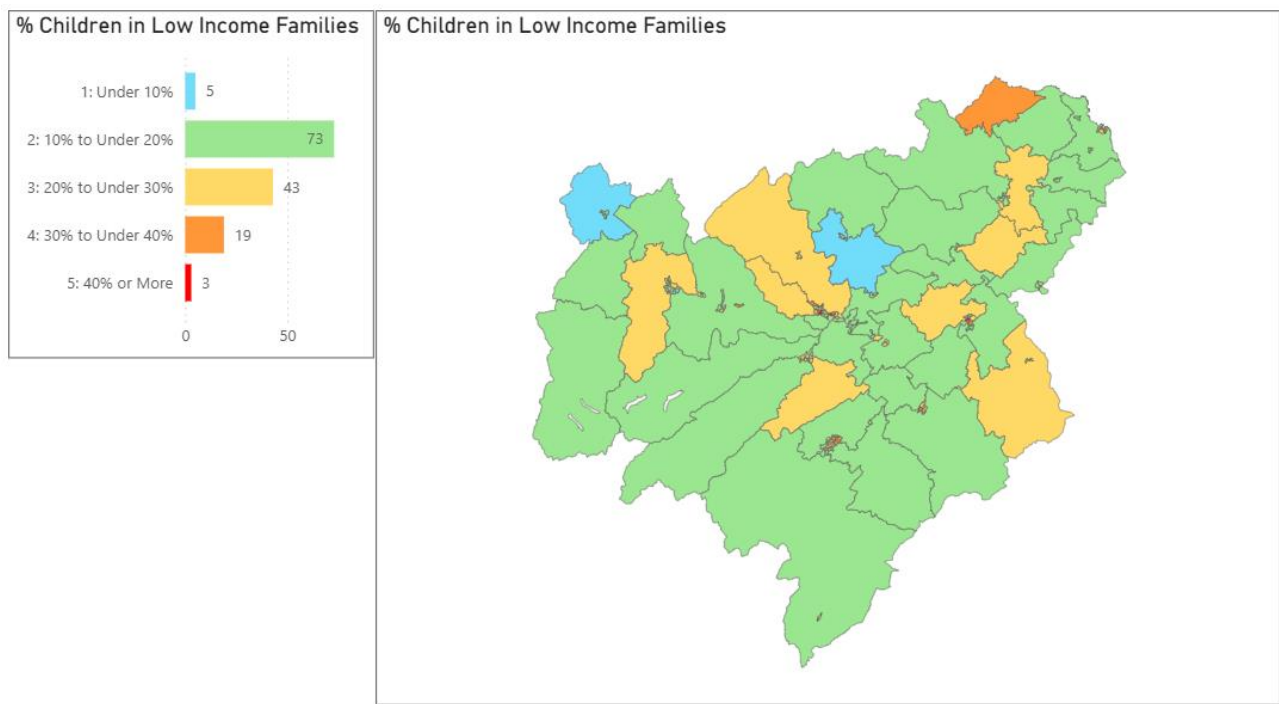
The tables below shows the count and proportion of data zones by their Children in Low Income Families group and Clothing Grant group resulting in their Scottish Borders Child Poverty Index grouping.

		Children in Low Income Families Group						
		0: None	1: Lower	2: Low	3: Mid	4: High	5: Higher	Scottish Borders
Clothing Grant Group	0: None			3				3
	1: Lower		3	13	5			21
	2: Low			28	6			34
	3: Mid		2	11	5	1		19
	4: High			9	7	4	1	21
	5: Higher			6	14	8	1	29
	6: Higher+			3	6	6	1	16
	Scottish Borders		5	73	43	19	3	143

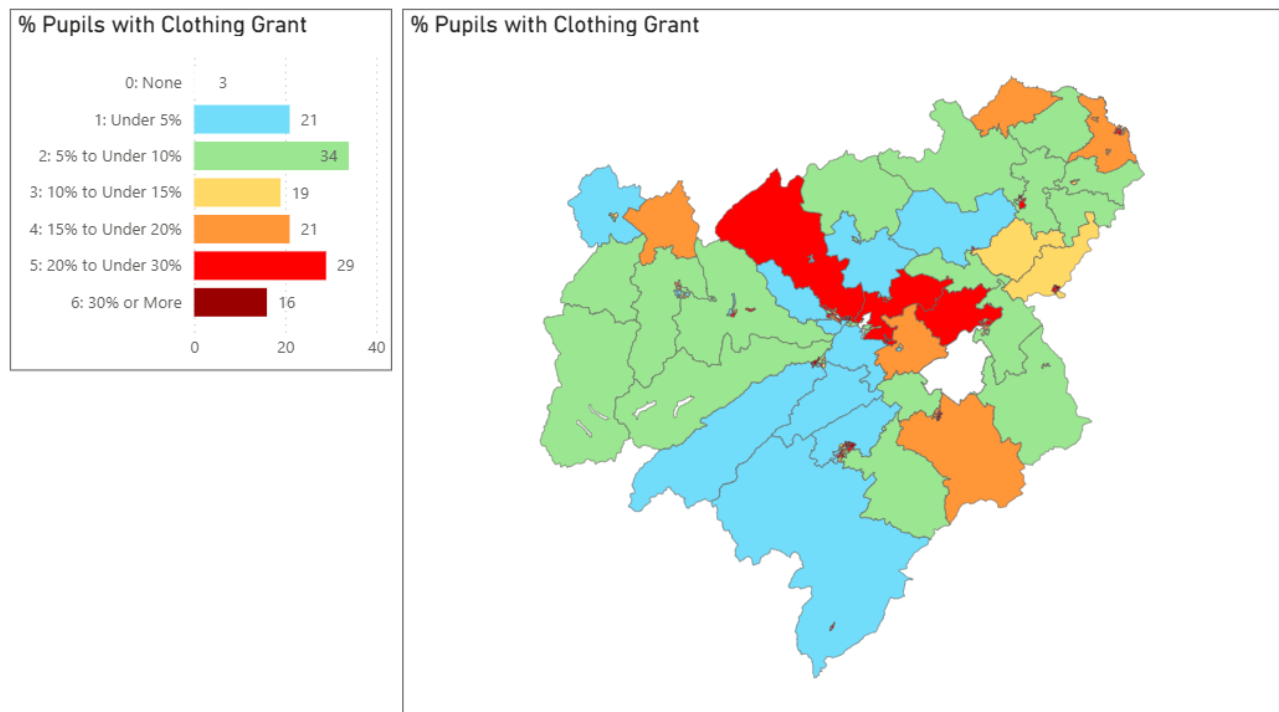
		Children in Low Income Families Group						
		0: None	1: Lower	2: Low	3: Mid	4: High	5: Higher	Scottish Borders
Clothing Grant Group	0: None			2%				2%
	1: Lower		2%	9%	3%			15%
	2: Low			20%	4%			24%
	3: Mid		1%	8%	3%	1%		13%
	4: High			6%	5%	3%	1%	15%
	5: Higher			4%	10%	6%	1%	20%
	6: Higher+			2%	4%	4%	1%	11%
	Scottish Borders		3%	51%	30%	13%	2%	100%

The following page shows the maps for the groupings for each components.

The graph and map below show the number of data zones in each of the groupings for **Children in Low Income Families** for the Scottish Borders Child Poverty Index 2024.

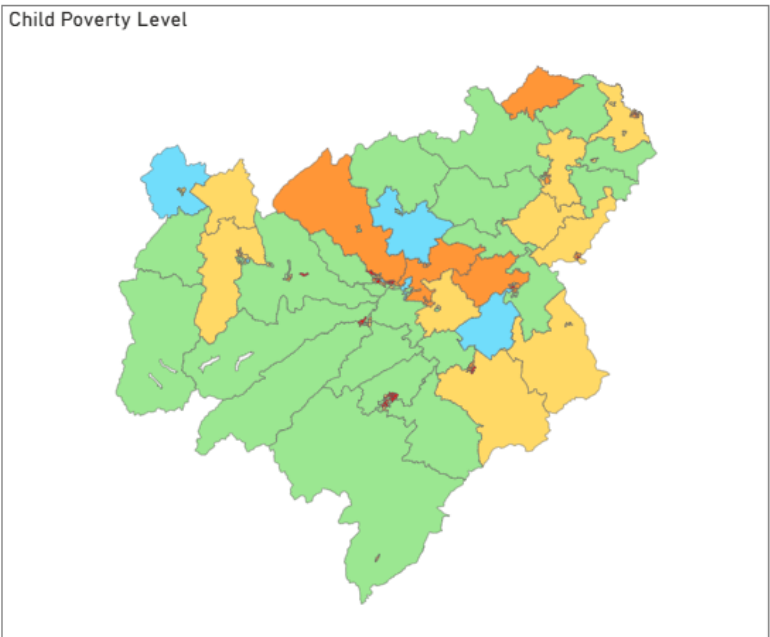
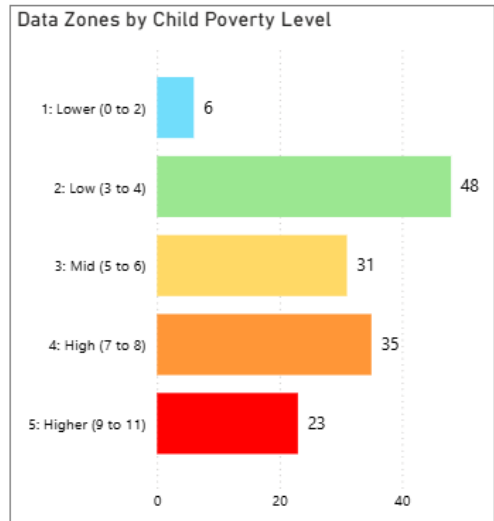
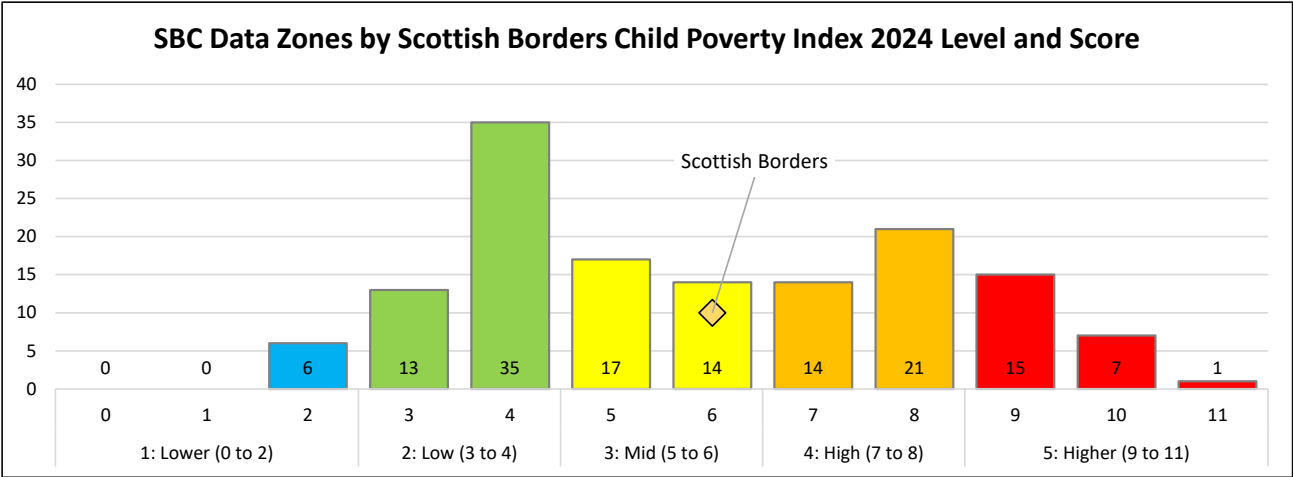


The graph and map below show the number of data zones in each of the groupings for **Pupils with Clothing Grant** for the Scottish Borders Child Poverty Index 2024.



Scottish Borders Child Poverty Index 2024 Results

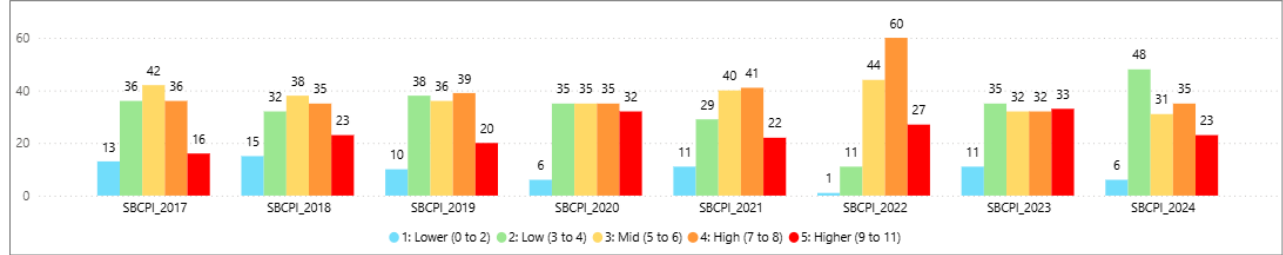
The graph and map below show the Scottish Borders data zones based on the SB CPI score, grouped into levels of Child Poverty. Higher level (23 data zones) has a score of 9 to 11; High level (35 data zones) have a score of 7 or 8; Mid level (31 data zones) have a score of 5 or 6; Low level (48 data zones) have a score of 3 or 4; and Lower level (6 data zones) has a score of 0 to 2. Every data zone in the Scottish Borders has some element of child poverty. The Scottish Borders SB CPI score for 2024 was 6 in the Mid level.



Scottish Borders Child Poverty Level Change Over Time 2017 to 2024

The graph below shows the distribution of data zones by level of child poverty for between 2017 and 2024.

Count of Data Zones in the Scottish Borders by Level of Child Poverty (2017 to 2024)



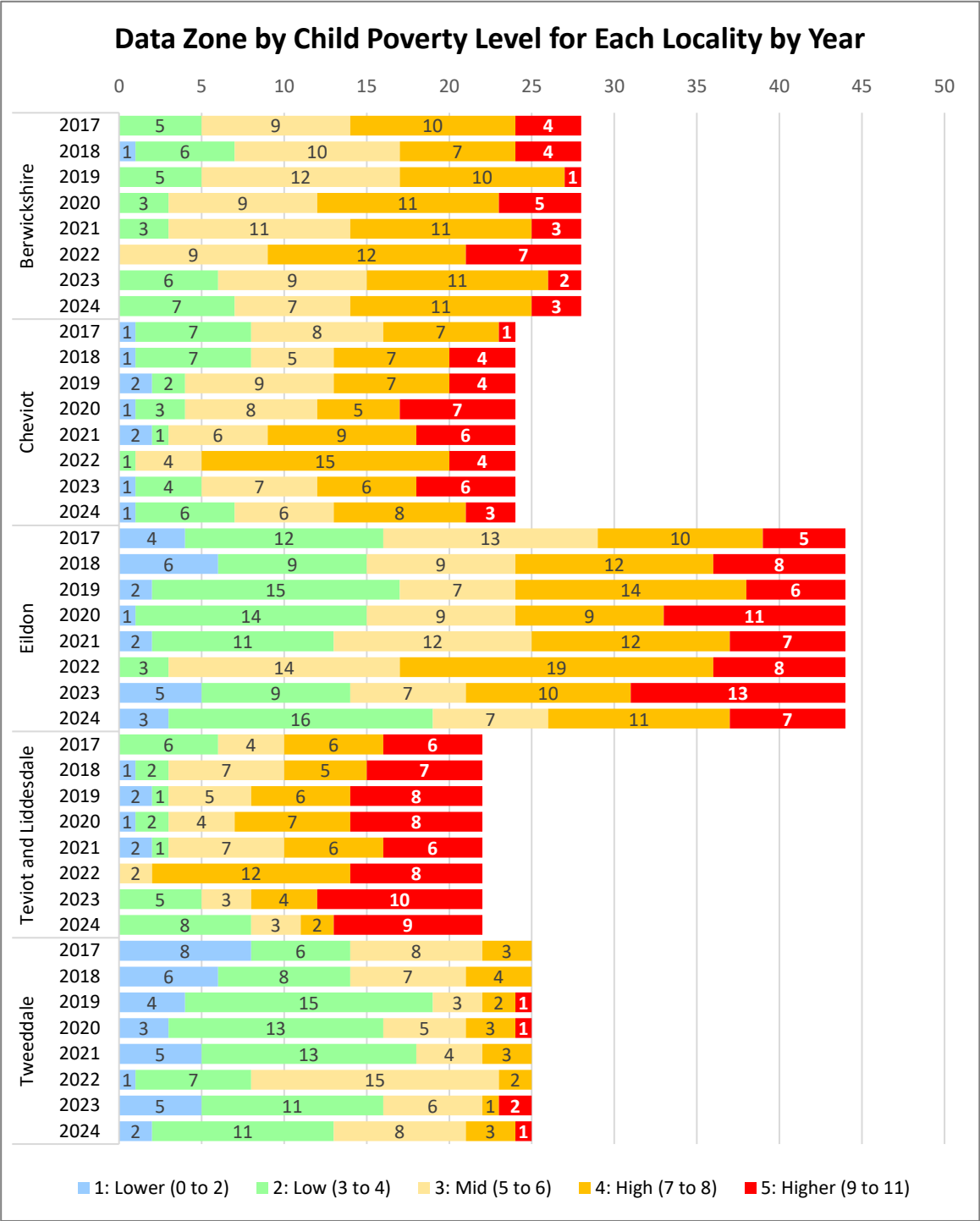
Proportion of Data Zones in the Scottish Borders by Level of Child Poverty (2017 to 2024)



The graph below shows the proportion of data zones by each level of child poverty from 2017 to 2024. The impact of Covid19 and the cost-of-living crisis can be seen in the number/proportion of data zones with Mid/High/Higher levels of child poverty. 66% of data zones had Mid/High/Higher levels of child poverty in 2017 that increased to 71% in 2020 and then to 92% for 2022. In 2023 the proportion of data zones with Mid/High/Higher levels of child poverty return to pre-covid level with 68%. Then for 2024 the proportion of data zones with Mid/High/Higher levels of child poverty reduced further to 62%, with a marked increase in the data zones in the low group.

Appendix 1: Level of Child Poverty 2017 – 2024, SBC, Ward and Data Zone lists the data zones within each ward along with its SIMD2020 decile and the SB CPI level for 2017 to 2024.

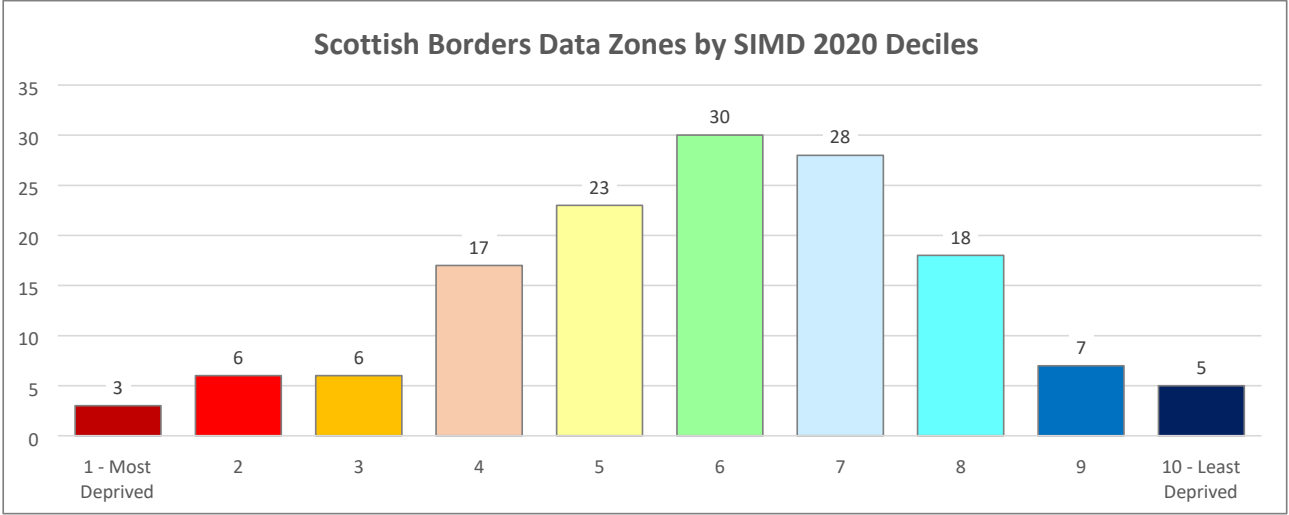
The graph below shows the distribution of data zones in each of the localities by level of child poverty for each of the years.



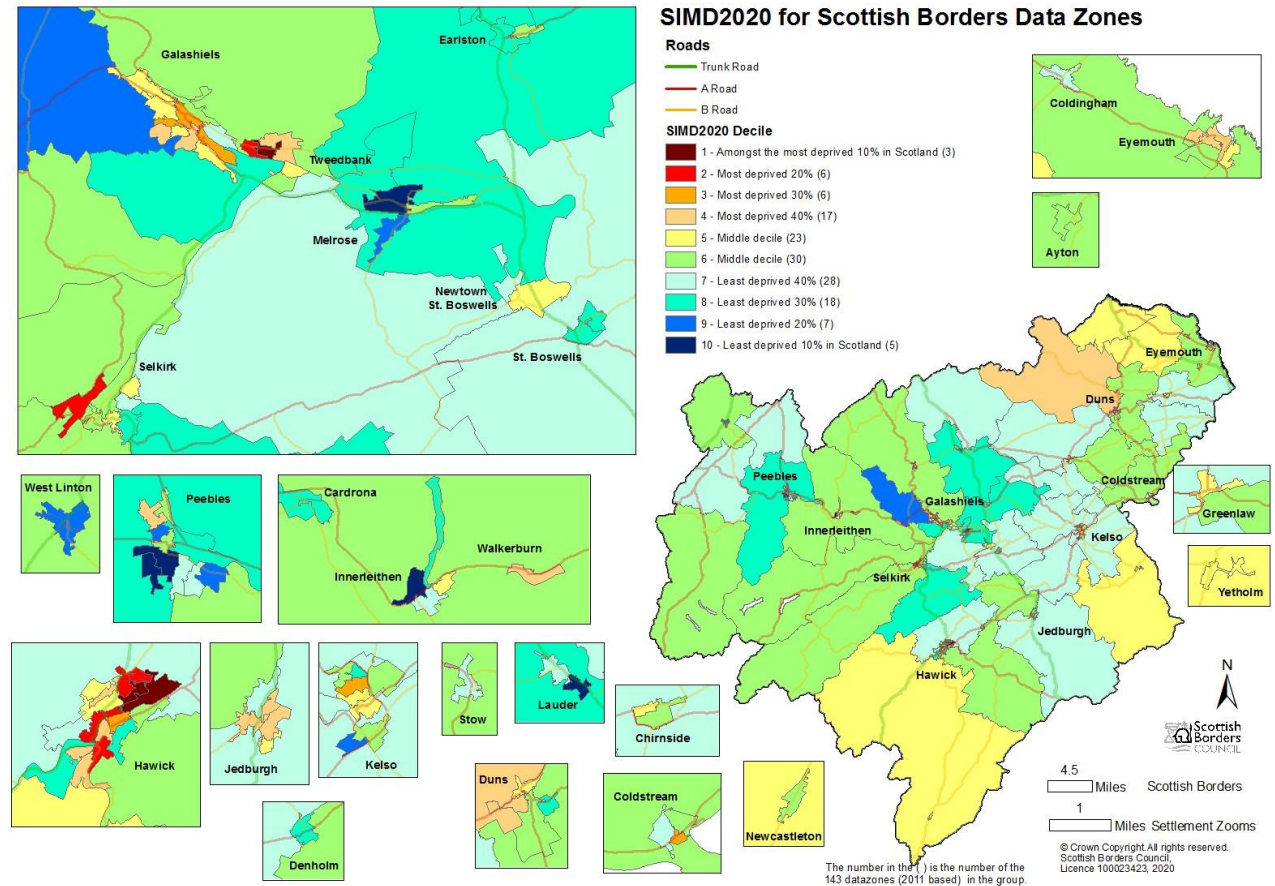
Comparing Scottish Borders Child Poverty Index 2024 to SIMD 2020

The Scottish Index of Multiple Deprivation (SIMD) is a good tool for identifying overall deprivation, however, it is not poverty specific, or child focused. The SB CPI is a tactical index created to enable better insight into child poverty within the Scottish Borders. This is a basic comparison between SIMD2020 Decile and SB CPI Score.

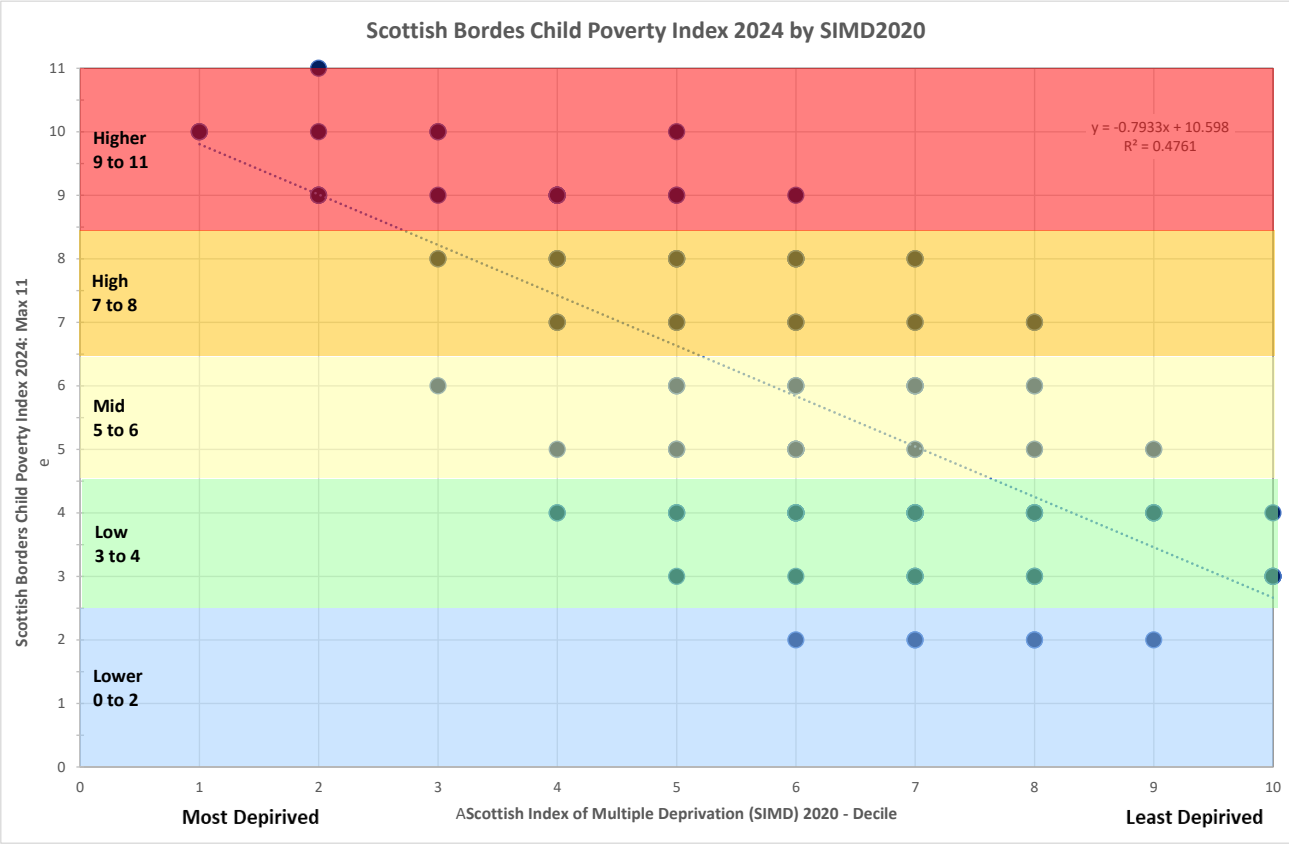
The graph below shows the count of the 143 data zones in the Scottish Borders by the SIMD 2020 Decile.



The map below shows the Scottish Borders data zones and the SIMD2020 decile.



The graph below shows where the SB CPI 2024 score for each of the 143 data zones related to SIMD2020 decile. The graph shows that the SIMD2020 does have a correlation with the child poverty levels for 2024. Although it is of note that areas in the Scottish Borders with a SIMD 2020 decile of 7 or 8 have a high level of child poverty.



The table below shows the proportion of Scottish Borders data zones by their SIMD2020 Deciles and their SB CPI 2023 level as well as the proportion of data zones in the SIMD2020 Decile that have Mid/High/Higher child poverty levels for 2024. Overall, 62% of Scottish Borders data zones were in areas of Mid/High/Higher levels of child poverty. Within the SIMD2020 deciles the proportion ranges from 0% to 100%.

SIMD2020 Decile / SB CPI 2024 Level	1. Lower (0 to 2)	2. Low (3 to 4)	3. Mid (5 to 6)	4. High (7 to 8)	5. Higher (9 to 11)	Scottish Borders Data Zones	% Mid/ High / Higher of Decile
1 - Most Deprived					2%	2%	100%
2					4%	4%	100%
3			1%	1%	2%	4%	100%
4		1%	1%	5%	5%	12%	88%
5		3%	4%	6%	2%	16%	78%
6	1%	6%	7%	6%	1%	21%	67%
7	1%	10%	5%	3%		20%	43%
8	1%	6%	3%	2%		13%	39%
9	1%	3%	1%			5%	29%
10 - Least Deprived		3%				3%	0%
Scottish Borders	4%	34%	22%	24%	16%	100%	62%

Percentages rounded to nearest whole.

Appendix 1: Level of Child Poverty 2017 – 2024, SBC, Ward and Data Zone

Scottish Borders and Wards

Area	SB CPI 2017 Level	SB CPI 2018 Level	SB CPI 2019 Level	SB CPI 2020 Level	SB CPI 2021 Level	SB CPI 2022 Level	SB CPI 2023 Level	SB CPI 2024 Level
Scottish Borders	3: Mid	4: High	4: High	4: High	3: Mid	4: High	4: High	3: Mid
East Berwickshire	4: High	4: High	4: High	4: High	3: Mid	4: High	4: High	4: High
Mid Berwickshire	4: High	4: High	4: High	4: High	4: High	4: High	4: High	4: High
Jedburgh and District	4: High	5: Higher	5: Higher	5: Higher	4: High	5: Higher	5: Higher	4: High
Kelso and District	4: High	4: High	4: High	4: High	4: High	4: High	4: High	4: High
Galashiels and District	3: Mid	3: Mid	4: High	4: High	4: High	4: High	4: High	4: High
Leaderdale and Melrose	3: Mid	3: Mid	4: High	4: High	4: High	4: High	4: High	3: Mid
Selkirkshire	2: Low	2: Low	2: Low	2: Low	3: Mid	3: Mid	3: Mid	2: Low
Hawick and Denholm	3: Mid	3: Mid	3: Mid	3: Mid	4: High	4: High	4: High	3: Mid
Hawick and Hermitage	4: High	4: High	4: High	4: High	4: High	4: High	4: High	4: High
Tweeddale East	2: Low	2: Low	2: Low	2: Low	3: Mid	3: Mid	3: Mid	2: Low
Tweeddale West	2: Low	2: Low	2: Low	3: Mid	3: Mid	3: Mid	3: Mid	3: Mid

Berwickshire

East Berwickshire

Area	SB CPI 2017 Level	SB CPI 2018 Level	SB CPI 2019 Level	SB CPI 2020 Level	SB CPI 2021 Level	SB CPI 2022 Level	SB CPI 2023 Level	SB CPI 2024 Level
Scottish Borders	3: Mid	4: High	4: High	4: High	3: Mid	4: High	4: High	3: Mid
East Berwickshire	4: High	4: High	4: High	4: High	3: Mid	4: High	4: High	4: High

DZ2011 code and Name	SIMD2020v2 Decile	SB CPI 2017 Level	SB CPI 2018 Level	SB CPI 2019 Level	SB CPI 2020 Level	SB CPI 2021 Level	SB CPI 2022 Level	SB CPI 2023 Level	SB CPI 2024 Level
S01012309: Ayton	6	3: Mid	3: Mid	3: Mid	4: High	4: High	3: Mid	4: High	3: Mid
S01012310: St Abbs and Eyemouth Landward	6	2: Low	2: Low	3: Mid	4: High	4: High	4: High	2: Low	3: Mid
S01012311: Coldingham	7	5: Higher	5: Higher	4: High	5: Higher	5: Higher	5: Higher	4: High	3: Mid
S01012312: Reston and Coldingham Moor Area	5	4: High	3: Mid	3: Mid	3: Mid	3: Mid	3: Mid	2: Low	2: Low
S01012313: Cockburnspath and Area	5	3: Mid	3: Mid	3: Mid	4: High	3: Mid	5: Higher	3: Mid	4: High
S01012314: Eyemouth - Gungreen	5	5: Higher	4: High	5: Higher	5: Higher	5: Higher	5: Higher	5: Higher	4: High
S01012315: Eyemouth - Seafront Harbour	4	2: Low	1: Lower	3: Mid	4: High	3: Mid	4: High	4: High	4: High
S01012316: Eyemouth - Central	4	4: High	4: High	4: High	4: High	5: Higher	4: High	4: High	5: Higher
S01012317: Eyemouth - South	6	4: High	3: Mid	4: High	4: High	4: High	3: Mid	4: High	4: High
S01012318: Eyemouth - North	4	4: High	4: High	4: High	4: High	4: High	4: High	4: High	4: High
S01012320: Chirside - West	5	5: Higher	5: Higher	4: High	5: Higher	3: Mid	3: Mid	5: Higher	5: Higher
S01012321: Chirside - East	6	3: Mid	3: Mid	2: Low	3: Mid	3: Mid	3: Mid	3: Mid	3: Mid
S01012322: Whitsome Allanton and Hutton Area	7	3: Mid	2: Low	2: Low	2: Low	3: Mid	3: Mid	2: Low	2: Low
S01012323: Fouliden and Area	7	3: Mid	3: Mid	3: Mid	3: Mid	3: Mid	4: High	2: Low	2: Low

Mid Berwickshire

Area	SB CPI 2017 Level	SB CPI 2018 Level	SB CPI 2019 Level	SB CPI 2020 Level	SB CPI 2021 Level	SB CPI 2022 Level	SB CPI 2023 Level	SB CPI 2024 Level
Scottish Borders	3: Mid	4: High	4: High	4: High	3: Mid	4: High	4: High	3: Mid
Mid Berwickshire	4: High	4: High	4: High	4: High	4: High	4: High	4: High	4: High

DZ2011 code and Name	SIMD2020v2 Decile	SB CPI 2017 Level	SB CPI 2018 Level	SB CPI 2019 Level	SB CPI 2020 Level	SB CPI 2021 Level	SB CPI 2022 Level	SB CPI 2023 Level	SB CPI 2024 Level
S01012300: Greenlaw	5	4: High	5: Higher	4: High	4: High	4: High	3: Mid	4: High	4: High
S01012301: Swinton Leithholm and Fogo Area	6	2: Low	3: Mid	3: Mid	3: Mid	4: High	4: High	3: Mid	3: Mid
S01012302: Cranshaws - Abbey St Bathans Area	4	3: Mid	2: Low	2: Low	3: Mid	4: High	5: Higher	3: Mid	2: Low
S01012303: Westruther and Polwarth Area	7	2: Low	2: Low	2: Low	2: Low	3: Mid	2: Low	2: Low	2: Low
S01012304: Gordon and Hume Area	7	2: Low	2: Low	2: Low	2: Low	2: Low	3: Mid	2: Low	2: Low
S01012305: Duns - South	6	3: Mid	3: Mid	4: High	4: High	3: Mid	4: High	3: Mid	4: High
S01012306: Duns - West	4	5: Higher	4: High	4: High	5: Higher	4: High	4: High	4: High	2: Low
S01012307: Duns - North	5	4: High	4: High	4: High	3: Mid	2: Low	5: Higher	3: Mid	4: High
S01012308: Duns - East	8	4: High	3: Mid	3: Mid	3: Mid	3: Mid	3: Mid	3: Mid	4: High
S01012319: Preston and Manderston Area	6	4: High	4: High	3: Mid	3: Mid	3: Mid	4: High	3: Mid	3: Mid
S01012324: Birgham and Ladykirk Area	6	3: Mid	3: Mid	3: Mid	4: High	4: High	4: High	3: Mid	3: Mid
S01012325: Coldstream - West	7	3: Mid	2: Low	3: Mid	3: Mid	3: Mid	5: Higher	4: High	4: High
S01012326: Coldstream - South	3	4: High	5: Higher	4: High	5: Higher	4: High	4: High	4: High	5: Higher
S01012327: Coldstream - East	6	4: High	4: High	3: Mid	4: High	4: High	5: Higher	4: High	4: High

Cheviot

Jedburgh and District

Area	SB CPI 2017 Level	SB CPI 2018 Level	SB CPI 2019 Level	SB CPI 2020 Level	SB CPI 2021 Level	SB CPI 2022 Level	SB CPI 2023 Level	SB CPI 2024 Level
Scottish Borders	3: Mid	4: High	4: High	4: High	3: Mid	4: High	4: High	3: Mid
Jedburgh and District	4: High	5: Higher	5: Higher	5: Higher	4: High	5: Higher	5: Higher	4: High

DZ2011 code and Name	SIMD2020v2 Decile	SB CPI 2017 Level	SB CPI 2018 Level	SB CPI 2019 Level	SB CPI 2020 Level	SB CPI 2021 Level	SB CPI 2022 Level	SB CPI 2023 Level	SB CPI 2024 Level
S01012341: Oxnam and Camptown Area	7	2: Low	2: Low	2: Low	3: Mid	3: Mid	3: Mid	3: Mid	3: Mid
S01012342: Ancrum and Lanton Area	6	2: Low	2: Low	3: Mid	3: Mid	2: Low	4: High	2: Low	2: Low
S01012343: Roxburgh Heiton Eckford Area	7	2: Low	2: Low	2: Low	2: Low	3: Mid	4: High	2: Low	1: Lower
S01012346: Dryburgh Charlesfield Maxton Area	7	3: Mid	2: Low	3: Mid	3: Mid	4: High	4: High	3: Mid	3: Mid
S01012347: St Boswells - East	8	2: Low	3: Mid	4: High	4: High	4: High	5: Higher	3: Mid	3: Mid
S01012348: St Boswells - West	8	2: Low	2: Low	3: Mid	3: Mid	3: Mid	4: High	3: Mid	2: Low
S01012349: Jedburgh - Howden	5	4: High	5: Higher	5: Higher	4: High	5: Higher	4: High	4: High	5: Higher
S01012350: Jedburgh - Doom Hill	4	5: Higher	5: Higher	5: Higher	5: Higher	4: High	3: Mid	5: Higher	5: Higher
S01012351: Jedburgh - East Central	4	4: High	4: High	4: High	5: Higher	5: Higher	4: High	4: High	4: High
S01012352: Jedburgh - West Central	7	4: High	4: High	4: High	5: Higher	4: High	3: Mid	5: Higher	4: High
S01012353: Jedburgh - Abbey	4	3: Mid	5: Higher	4: High	5: Higher	5: Higher	4: High	4: High	4: High

Kelso and District

Area	SB CPI 2017 Level	SB CPI 2018 Level	SB CPI 2019 Level	SB CPI 2020 Level	SB CPI 2021 Level	SB CPI 2022 Level	SB CPI 2023 Level	SB CPI 2024 Level
Scottish Borders	3: Mid	4: High	4: High	4: High	3: Mid	4: High	4: High	3: Mid
Kelso and District	4: High	4: High	4: High	4: High	4: High	4: High	4: High	4: High

DZ2011 code and Name	SIMD2020v2 Decile	SB CPI 2017 Level	SB CPI 2018 Level	SB CPI 2019 Level	SB CPI 2020 Level	SB CPI 2021 Level	SB CPI 2022 Level	SB CPI 2023 Level	SB CPI 2024 Level
S01012328: Town Yetholm	5	4: High	4: High	3: Mid	4: High	4: High	2: Low	4: High	3: Mid
S01012329: Morebattle Hownam and Area	5	3: Mid	3: Mid	3: Mid	3: Mid	3: Mid	4: High	3: Mid	3: Mid
S01012330: Kelso S - Pinnaclehill	6	3: Mid	5: Higher	4: High	4: High	4: High	4: High	2: Low	2: Low
S01012331: Kelso S - Maxwellheugh	9	1: Lower	1: Lower	1: Lower	1: Lower	1: Lower	4: High	1: Lower	2: Low
S01012332: Smailholm Stitchill and Ednam Area	7	3: Mid	3: Mid	3: Mid	3: Mid	4: High	4: High	5: Higher	4: High
S01012333: Sprouston and Area	7	2: Low	2: Low	1: Lower	2: Low	1: Lower	3: Mid	2: Low	2: Low
S01012334: Kelso N - High Croft Orchard Park	6	4: High	4: High	5: Higher	5: Higher	5: Higher	4: High	5: Higher	4: High
S01012335: Kelso N - Hendersyde Oakfield	7	3: Mid	3: Mid	3: Mid	2: Low	3: Mid	4: High	3: Mid	3: Mid
S01012336: Kelso N - Abbotseat	8	3: Mid	3: Mid	3: Mid	3: Mid	4: High	5: Higher	4: High	2: Low
S01012337: Kelso N - Poynder Park	3	4: High	4: High	5: Higher	5: Higher	5: Higher	4: High	5: Higher	5: Higher
S01012338: Kelso S - Bowmont and Edenside	5	3: Mid	4: High	4: High	4: High	5: Higher	4: High	5: Higher	4: High
S01012339: Kelso S - Abbey	5	2: Low	2: Low	3: Mid	3: Mid	3: Mid	5: Higher	3: Mid	4: High
S01012340: Kelso S - Broomlands	6	4: High	4: High	4: High	5: Higher	4: High	5: Higher	4: High	4: High

Eildon

Galashiels and District

Area	SB CPI 2017 Level	SB CPI 2018 Level	SB CPI 2019 Level	SB CPI 2020 Level	SB CPI 2021 Level	SB CPI 2022 Level	SB CPI 2023 Level	SB CPI 2024 Level
Scottish Borders	3: Mid	4: High	4: High	4: High	3: Mid	4: High	4: High	3: Mid
Galashiels and District	3: Mid	3: Mid	4: High	4: High	4: High	4: High	4: High	4: High

DZ2011 code and Name	SIMD2020v2 Decile	SB CPI 2017 Level	SB CPI 2018 Level	SB CPI 2019 Level	SB CPI 2020 Level	SB CPI 2021 Level	SB CPI 2022 Level	SB CPI 2023 Level	SB CPI 2024 Level
S01012271: Heriot - Fountainhall - Stow Landward	6	2: Low	3: Mid	3: Mid	4: High	4: High	4: High	4: High	4: High
S01012272: Stow	7	1: Lower	1: Lower	2: Low	2: Low	3: Mid	3: Mid	3: Mid	2: Low
S01012274: Galashiels - N - Halliburton	6	2: Low	3: Mid	3: Mid	3: Mid	3: Mid	3: Mid	4: High	3: Mid
S01012275: Galashiels - N - Town Centre	3	4: High	5: Higher	5: Higher	5: Higher	5: Higher	4: High	5: Higher	4: High
S01012276: Galashiels - N - Windyknowe	5	1: Lower	2: Low	2: Low	2: Low	2: Low	3: Mid	2: Low	2: Low
S01012277: Galashiels - N - Wood St	5	5: Higher	5: Higher	5: Higher	5: Higher	4: High	5: Higher	5: Higher	5: Higher
S01012278: Galashiels - W - Old Town	4	4: High	5: Higher	4: High	4: High	3: Mid	3: Mid	4: High	5: Higher
S01012279: Galashiels - W - Thistle St	3	4: High	5: Higher	4: High	5: Higher	5: Higher	4: High	5: Higher	5: Higher
S01012280: Galashiels - W - Balmoral Rd	4	4: High	4: High	4: High	5: Higher	5: Higher	4: High	5: Higher	4: High
S01012281: Galashiels - W - Balmoral Pl	5	4: High	4: High	4: High	4: High	4: High	4: High	5: Higher	3: Mid
S01012282: Galashiels - S - Netherdale	8	2: Low	1: Lower	2: Low	2: Low	2: Low	2: Low	2: Low	2: Low
S01012283: Galashiels - S - St Peters Sch	5	4: High	4: High	4: High	4: High	4: High	4: High	4: High	3: Mid
S01012284: Galashiels - S - Huddersfield	3	5: Higher	5: Higher	5: Higher	4: High	4: High	5: Higher	5: Higher	4: High
S01012285: Galashiels - S - Glenfield	7	3: Mid	1: Lower	3: Mid	3: Mid	2: Low	3: Mid	1: Lower	1: Lower
S01012286: Gala - Langlee - East	4	4: High	4: High	4: High	5: Higher	4: High	3: Mid	5: Higher	5: Higher
S01012287: Gala - Langlee - Central	1	5: Higher	5: Higher	5: Higher	5: Higher	5: Higher	5: Higher	5: Higher	5: Higher
S01012288: Gala - Langlee - West	2	5: Higher	5: Higher	5: Higher	5: Higher	5: Higher	5: Higher	5: Higher	5: Higher

Leaderdale and Melrose

Area	SB CPI 2017 Level	SB CPI 2018 Level	SB CPI 2019 Level	SB CPI 2020 Level	SB CPI 2021 Level	SB CPI 2022 Level	SB CPI 2023 Level	SB CPI 2024 Level
Scottish Borders	3: Mid	4: High	4: High	4: High	3: Mid	4: High	4: High	3: Mid
Leaderdale and Melrose	3: Mid	3: Mid	4: High	4: High	4: High	4: High	4: High	3: Mid

DZ2011 code and Name	SIMD2020v2 Decile	SB CPI 2017 Level	SB CPI 2018 Level	SB CPI 2019 Level	SB CPI 2020 Level	SB CPI 2021 Level	SB CPI 2022 Level	SB CPI 2023 Level	SB CPI 2024 Level
S01012268: Earlston and Melrose Landward	8	3: Mid	3: Mid	3: Mid	3: Mid	3: Mid	3: Mid	4: High	4: High
S01012269: Earlston - West	8	2: Low	2: Low	3: Mid	2: Low	2: Low	2: Low	1: Lower	4: High
S01012270: Earlston - East	6	3: Mid	4: High	4: High	3: Mid	3: Mid	3: Mid	4: High	4: High
S01012289: Gattonside - Darnick - Chiefswood	8	2: Low	1: Lower	1: Lower	1: Lower	2: Low	3: Mid	1: Lower	1: Lower
S01012290: Melrose - Newstead	6	3: Mid	3: Mid	3: Mid	3: Mid	3: Mid	4: High	4: High	3: Mid
S01012291: Melrose - Dingleton Hill	9	2: Low	2: Low	2: Low	2: Low	2: Low	3: Mid	2: Low	2: Low
S01012292: Melrose - High Street	10	1: Lower	1: Lower	2: Low	2: Low	2: Low	4: High	2: Low	2: Low
S01012293: Tweedbank - West	6	3: Mid	3: Mid	3: Mid	4: High	3: Mid	2: Low	4: High	3: Mid
S01012294: Tweedbank - North	5	4: High	4: High	4: High	3: Mid	4: High	3: Mid	3: Mid	2: Low
S01012295: Tweedbank - East	7	3: Mid	2: Low	2: Low	2: Low	2: Low	4: High	2: Low	2: Low
S01012296: Lauder - South	10	2: Low	2: Low	2: Low	2: Low	2: Low	3: Mid	1: Lower	2: Low
S01012297: Blainslie and Legerwood	8	2: Low	1: Lower	1: Lower	2: Low	1: Lower	4: High	1: Lower	1: Lower
S01012298: Lauder - North	7	3: Mid	3: Mid	2: Low	3: Mid	2: Low	4: High	2: Low	2: Low
S01012299: Oxton and Area	7	2: Low	2: Low	2: Low	2: Low	3: Mid	4: High	2: Low	2: Low

Selkirkshire

Area	SB CPI 2017 Level	SB CPI 2018 Level	SB CPI 2019 Level	SB CPI 2020 Level	SB CPI 2021 Level	SB CPI 2022 Level	SB CPI 2023 Level	SB CPI 2024 Level
Scottish Borders	3: Mid	4: High	4: High	4: High	3: Mid	4: High	4: High	3: Mid
Selkirkshire	2: Low	2: Low	2: Low	2: Low	3: Mid	3: Mid	3: Mid	2: Low

DZ2011 code and Name	SIMD2020v2 Decile	SB CPI 2017 Level	SB CPI 2018 Level	SB CPI 2019 Level	SB CPI 2020 Level	SB CPI 2021 Level	SB CPI 2022 Level	SB CPI 2023 Level	SB CPI 2024 Level
S01012344: Newtown St Boswells - South	5	3: Mid	4: High	4: High	5: Higher	4: High	3: Mid	5: Higher	4: High
S01012345: Newtown St Boswells - North	7	3: Mid	4: High	4: High	5: Higher	4: High	4: High	4: High	4: High
S01012376: Ashkirk Lilliesleaf and Midlem Area	8	2: Low	3: Mid	2: Low	2: Low	3: Mid	4: High	3: Mid	2: Low
S01012377: Bowden and Lindean Area	7	1: Lower	2: Low	2: Low	2: Low	2: Low	4: High	2: Low	2: Low
S01012378: Ettrick Water and Bowhill Area	6	3: Mid	3: Mid	2: Low	2: Low	1: Lower	4: High	2: Low	2: Low
S01012379: Yarrow Water and Sunderland Area	6	2: Low	3: Mid	2: Low	4: High	4: High	4: High	3: Mid	2: Low
S01012380: Selkirk - Shawburn	5	4: High	4: High	4: High	4: High	5: Higher	5: Higher	5: Higher	4: High
S01012381: Selkirk - Town Centre	5	3: Mid	4: High	4: High	5: Higher	4: High	4: High	5: Higher	4: High
S01012382: Selkirk - Hillside Terrace	8	2: Low	2: Low	2: Low	3: Mid	3: Mid	3: Mid	3: Mid	3: Mid
S01012383: Selkirk - Shawpark	7	4: High	4: High	4: High	3: Mid	3: Mid	4: High	4: High	3: Mid
S01012384: Selkirk - Dunsdale	6	3: Mid	2: Low	4: High	4: High	4: High	5: Higher	4: High	2: Low
S01012385: Selkirk - Heatherlie	6	3: Mid	4: High	2: Low	2: Low	3: Mid	5: Higher	3: Mid	2: Low
S01012386: Selkirk - Bannerfield	2	5: Higher	5: Higher	5: Higher	5: Higher	5: Higher	5: Higher	5: Higher	5: Higher

Teviot and Liddesdale

Hawick and Denholm

Area	SB CPI 2017 Level	SB CPI 2018 Level	SB CPI 2019 Level	SB CPI 2020 Level	SB CPI 2021 Level	SB CPI 2022 Level	SB CPI 2023 Level	SB CPI 2024 Level
Scottish Borders	3: Mid	4: High	4: High	4: High	3: Mid	4: High	4: High	3: Mid
Hawick and Denholm	3: Mid	3: Mid	3: Mid	3: Mid	4: High	4: High	4: High	3: Mid

DZ2011 code and Name	SIMD2020v2 Decile	SB CPI 2017 Level	SB CPI 2018 Level	SB CPI 2019 Level	SB CPI 2020 Level	SB CPI 2021 Level	SB CPI 2022 Level	SB CPI 2023 Level	SB CPI 2024 Level
S01012356: Denholm	8	2: Low	3: Mid	3: Mid	3: Mid	3: Mid	4: High	4: High	2: Low
S01012357: Minto Cauldmill and Boonraw Area	7	2: Low	3: Mid	1: Lower	1: Lower	1: Lower	4: High	2: Low	2: Low
S01012358: Bonchester Bridge and Chesters Area	6	3: Mid	3: Mid	3: Mid	4: High	3: Mid	5: Higher	3: Mid	2: Low
S01012359: Hawick - Burnfoot - South East	1	5: Higher	5: Higher	5: Higher	5: Higher	5: Higher	5: Higher	5: Higher	5: Higher
S01012360: Hawick - Burnfoot - Central	1	5: Higher	5: Higher	5: Higher	5: Higher	5: Higher	5: Higher	5: Higher	5: Higher
S01012361: Hawick - Burnfoot - West	2	5: Higher	5: Higher	5: Higher	5: Higher	5: Higher	4: High	5: Higher	5: Higher
S01012362: Hawick - Burnfoot - North	2	5: Higher	5: Higher	5: Higher	5: Higher	5: Higher	5: Higher	5: Higher	5: Higher
S01012368: Hawick West End - Wilton Dean	7	2: Low	2: Low	3: Mid	3: Mid	3: Mid	4: High	2: Low	2: Low
S01012372: Hawick North - Commercial Road	2	4: High	5: Higher	5: Higher	5: Higher	5: Higher	5: Higher	5: Higher	5: Higher
S01012373: Hawick North - Wilton Hill	5	4: High	3: Mid	4: High	3: Mid	3: Mid	4: High	2: Low	2: Low
S01012374: Hawick North - Stirtches	5	3: Mid	3: Mid	3: Mid	4: High	3: Mid	3: Mid	4: High	3: Mid
S01012375: Hawick North - Silverbuthall	4	4: High	4: High	4: High	3: Mid	4: High	5: Higher	5: Higher	5: Higher

Hawick and Hermitage

Area	SB CPI 2017 Level	SB CPI 2018 Level	SB CPI 2019 Level	SB CPI 2020 Level	SB CPI 2021 Level	SB CPI 2022 Level	SB CPI 2023 Level	SB CPI 2024 Level
Scottish Borders	3: Mid	4: High	4: High	4: High	3: Mid	4: High	4: High	3: Mid
Hawick and Hermitage	4: High	4: High	4: High	4: High	4: High	4: High	4: High	4: High

DZ2011 code and Name	SIMD2020v2 Decile	SB CPI 2017 Level	SB CPI 2018 Level	SB CPI 2019 Level	SB CPI 2020 Level	SB CPI 2021 Level	SB CPI 2022 Level	SB CPI 2023 Level	SB CPI 2024 Level
S01012354: Newcastleton	6	3: Mid	5: Higher	4: High	4: High	4: High	4: High	5: Higher	4: High
S01012355: Teviothead and Hermitage Area	5	3: Mid	3: Mid	4: High	4: High	3: Mid	4: High	3: Mid	2: Low
S01012363: Hawick Central - Wellogate	2	4: High	4: High	5: Higher	4: High	4: High	5: Higher	5: Higher	5: Higher
S01012364: Hawick Central - Trinity	3	4: High	4: High	5: Higher	5: Higher	4: High	4: High	3: Mid	3: Mid
S01012365: Hawick Central - Millers Knowes	8	2: Low	1: Lower	1: Lower	2: Low	1: Lower	4: High	2: Low	2: Low
S01012366: Hawick Central - Town Centre	4	5: Higher	5: Higher	5: Higher	5: Higher	5: Higher	4: High	5: Higher	4: High
S01012367: Hawick Central - Weensland	6	5: Higher	4: High	4: High	4: High	4: High	4: High	5: Higher	5: Higher
S01012369: Hawick West End - Crumhaughill and Parkd	8	2: Low	2: Low	2: Low	2: Low	2: Low	4: High	2: Low	2: Low
S01012370: Hawick Central - Drumlanrig	4	2: Low	3: Mid	3: Mid	4: High	4: High	4: High	4: High	3: Mid
S01012371: Hawick West End - Crumhaugh	4	4: High	4: High	4: High	5: Higher	3: Mid	5: Higher	4: High	5: Higher

Tweeddale

Tweeddale East

Area	SB CPI 2017 Level	SB CPI 2018 Level	SB CPI 2019 Level	SB CPI 2020 Level	SB CPI 2021 Level	SB CPI 2022 Level	SB CPI 2023 Level	SB CPI 2024 Level
Scottish Borders	3: Mid	4: High	4: High	4: High	3: Mid	4: High	4: High	3: Mid
Tweeddale East	2: Low	2: Low	2: Low	2: Low	3: Mid	3: Mid	3: Mid	2: Low

DZ2011 code and Name	SIMD2020v2 Decile	SB CPI 2017 Level	SB CPI 2018 Level	SB CPI 2019 Level	SB CPI 2020 Level	SB CPI 2021 Level	SB CPI 2022 Level	SB CPI 2023 Level	SB CPI 2024 Level
S01012256: Peebles - S - Calvalry Park	9	2: Low	1: Lower	2: Low	2: Low	2: Low	2: Low	2: Low	1: Lower
S01012257: Peebles - S - Gallow Hill	7	3: Mid	3: Mid	2: Low	3: Mid	3: Mid	3: Mid	2: Low	3: Mid
S01012258: Peebles - S - Edderston Rd	10	1: Lower	1: Lower	1: Lower	1: Lower	1: Lower	3: Mid	1: Lower	2: Low
S01012259: Peebles - S - Caledonian-Springhill	10	1: Lower	1: Lower	1: Lower	1: Lower	1: Lower	2: Low	1: Lower	2: Low
S01012260: Peebles - S - Victoria Park	7	3: Mid	3: Mid	2: Low	3: Mid	3: Mid	3: Mid	2: Low	2: Low
S01012261: Cardrona	8	1: Lower	2: Low	2: Low	2: Low	2: Low	3: Mid	2: Low	2: Low
S01012262: Tweeddale East Landward	6	2: Low	2: Low	2: Low	2: Low	2: Low	4: High	2: Low	2: Low
S01012263: Walkerburn	4	4: High	4: High	4: High	4: High	3: Mid	3: Mid	5: Higher	5: Higher
S01012264: Innerleithen - North	8	1: Lower	2: Low	2: Low	2: Low	2: Low	3: Mid	2: Low	2: Low
S01012265: Innerleithen - East	5	4: High	4: High	4: High	4: High	4: High	3: Mid	4: High	3: Mid
S01012266: Innerleithen - South	7	3: Mid	3: Mid	2: Low	3: Mid	4: High	2: Low	3: Mid	4: High
S01012267: Innerleithen - West	10	1: Lower	2: Low	2: Low	2: Low	2: Low	2: Low	1: Lower	2: Low
S01012273: Clovenfords and Area	9	1: Lower	1: Lower	2: Low	2: Low	2: Low	3: Mid	2: Low	2: Low

Tweeddale West

Area	SB CPI 2017 Level	SB CPI 2018 Level	SB CPI 2019 Level	SB CPI 2020 Level	SB CPI 2021 Level	SB CPI 2022 Level	SB CPI 2023 Level	SB CPI 2024 Level
Scottish Borders	3: Mid	4: High	4: High	4: High	3: Mid	4: High	4: High	3: Mid
Tweeddale West	2: Low	2: Low	2: Low	3: Mid	3: Mid	3: Mid	3: Mid	3: Mid

DZ2011 code and Name	SIMD2020v2 Decile	SB CPI 2017 Level	SB CPI 2018 Level	SB CPI 2019 Level	SB CPI 2020 Level	SB CPI 2021 Level	SB CPI 2022 Level	SB CPI 2023 Level	SB CPI 2024 Level
S01012244: Carlops Romannobridge	6	1: Lower	1: Lower	1: Lower	1: Lower	1: Lower	2: Low	1: Lower	1: Lower
S01012245: West Linton - Lower	9	1: Lower	1: Lower	1: Lower	2: Low	1: Lower	3: Mid	1: Lower	2: Low
S01012246: West Linton - Upper	9	2: Low	2: Low	2: Low	2: Low	2: Low	3: Mid	2: Low	3: Mid
S01012247: Eddleston and Area	7	2: Low	2: Low	2: Low	2: Low	1: Lower	3: Mid	3: Mid	3: Mid
S01012248: Stobo - Blyth Bridge - Skirling	7	3: Mid	4: High	2: Low	3: Mid	2: Low	3: Mid	2: Low	2: Low
S01012249: Broughton and Upper Tweed	6	3: Mid	3: Mid	3: Mid	2: Low	2: Low	1: Lower	2: Low	2: Low
S01012250: Glentress and Manor Valley	8	3: Mid	2: Low	2: Low	2: Low	2: Low	3: Mid	3: Mid	3: Mid
S01012251: Peebles - N - Connor St	4	4: High	4: High	5: Higher	5: Higher	4: High	4: High	5: Higher	4: High
S01012252: Peebles North - Dalatho	6	3: Mid	3: Mid	3: Mid	4: High	2: Low	2: Low	3: Mid	3: Mid
S01012253: Peebles - N - Cuddyside	6	2: Low	3: Mid	3: Mid	3: Mid	3: Mid	3: Mid	3: Mid	4: High
S01012254: Peebles - N - March St	9	2: Low	3: Mid	2: Low	2: Low	2: Low	3: Mid	3: Mid	3: Mid
S01012255: Peebles - N - Eastgate	8	3: Mid	2: Low	2: Low	2: Low	2: Low	2: Low	2: Low	3: Mid